

# ONI SHOPFITTING PHONE CABINET PRODUCT CATALOG





**ONI**  
ONI Shopfitting



# ABOUT US

Founded in 2000, ONI Shopfitting Ltd. is a leading manufacturer of retail store fixtures, commercial interior fitouts, and display furnitures in Guangzhou, China. With a team of over 200 employees and a 30,000-square-meter production facility, ONI utilizes advanced manufacturing equipments to produce over 300,000 sets of store fixtures annually, including counters, display shelvings, store joineries, and display cases designed for premium product showcases.

After years of dedicated R&D and production, the company has assembled a team of specialized technical personnel and product development experts. Leveraging a dynamic team across R&D, manufacturing, marketing, and after-sales service, we employ internationally advanced production processes and technologies. Mastering multiple rigorous inspection techniques to ensure product precision and quality, we have progressively evolved into a renowned modern integrated manufacturer of display cabinets, display racks, and related products in China.



**25 Years**

Over 25 years  
experience



**30,000 m<sup>2</sup>**

More than 3000+  
projects per years



**220 +**

With a team of over  
200 employees



**3000 +**

30,000-square-meter  
production facility



GUANGZHOU ONI SHOPFITTING LIMITED

## INTRODUCTION

### Company Culture

### Our Mission

We exist to empower global retail brands with innovative, high-quality store fixtures that elevate their visual merchandising while optimizing costs and operational efficiency. As dedicated Store Fixture Specialist, we deliver tailored solutions that blend craftsmanship, technology, and sustainability to transform retail spaces into immersive retail brand experiences.

### Corporate Vision

To become a global leader among the top 10 store fixture suppliers worldwide, recognized as the go-to partner for retailers seeking cutting-edge design, reliability, and value-driven innovation. We aspire to set industry benchmarks by redefining how retail environments are built, ensuring our clients thrive in an ever-evolving market.

### Core Values

Serving customers people-oriented honest and pragmatic lean innovation



## Business Philosophy

Treat People with Integrity Quality  
is Supreme Profit from Trust

### Customer

Customer satisfaction and success is the only measure of our work performance.

### Staff

Implement an organizational system that develops from within, Select, promote and reward high-performing employees, Employees are the company's precious wealth, The improvement of staff quality and professional knowledge level is the growth of the company's wealth.

### Products

Continuously innovative products are the trajectory of the company's development and product quality and service quality are the lifeblood of the company's development.

### Product Brand

Establish a century-old great cause and build a century-old brand.

### Market

Sincere cooperation □ win-win situation □ develop the most suitable market and strive for the largest share.

## ONE STOP SERVICE

Use cutting-edge talents to create the best quality, provide the best service, and receive the best benefits



Professional Consulting

We will give initial advice and ideas about how to tackle a project more efficiently.



Retail Store Floor Plan

We analyze your demand and optimize your space layout to increase customer experience.



3D DISPLAY DESIGN

With a thorough understanding of the latest design trends, we create incredible designs to suit your space and brand.



Manufacturing

Manufacturing at our fully equipped factory in China, we produce top quality fixtures.



Global Delivery

We take care of all the logistics to provide you with worry-free, hassle-free delivery.



Retail Display Installation

Our local team of professional installer guarantee customer satisfaction and offer maintenance services if needed.

## OUR ADVANTAGES

### Independent R&D

There are more than 30 design and technology research and development talents, and more than 200 independent research and development products every year.

### Production Capacity

Our manufacturing facility spans over 30,000 square meters, specializing in counters, display racks, retail joinery, and custom display cases designed for premium product showcases.

### Lean Manufacturing

Exceptional quality management capabilities, implementing lean production practices, and certified under ISO quality systems.

### Technical Expertise

Our core team brings over 20 years of production experience, driving advancements in intelligent automation technology.

## FREE QUOTATION

3D generated images - including at least 5 images from different angles

360°Video for one space ( add \$199 for second space, if necessary )

Setting out drawings - Plan & Layout & Elevation

Joinery Production Drawings

# DEVELOPMENT HISTORY

## 2025-Strategic Expansion: ONI MENA Team Formed

In 2024, ONI established the ONI MENA Team, This strategic move enables us to better understand and serve the needs of clients in the Middle East and North Africa, marking a significant step in ONI's international expansion strategy.

## 2020-2023-Steady Growth: Serving Global Clients

From 2020 to 2023, we consistently exported high-quality fixtures and shopfitting solutions to clients across Europe, the Americas, the Middle East, and Southeast Asia, reinforcing long-term partnerships and expanding our global footprint.

## 2018-Major Leap: Fully Upgraded Factory

To meet growing global demand for quality and speed, we relocated in 2018 to a newly built, state-of-the-art facility of over 35,000 square meters, over 250 employees, This marked a major milestone in ONI's modernization and scaling efforts.

## 2016-Brand Elevation: ONI Headquarters Established

In 2016, ONI Shopfitting officially established its headquarters in Guangzhou, China. This move allowed us to integrate design, production, sales, and operations under one roof, It marked our evolution into a professional and internationally-oriented commercial environment solution provider.

## 2013-Capacity Expansion: Factory Growth

We significantly upgraded our production capabilities in 2013. The factory was expanded to 15,000 square meters and our workforce grew to 150 employees. We also improved our facilities and management systems.

## 2010-Creative Drive: Design Department Founded

ONI formed an independent Creative Design Team in 2010. This department focused on visual planning and product innovation for commercial spaces. It was a key milestone in our transformation from a traditional manufacturer to a design-driven enterprise.

## 2008-Foundation: Factory Established

In 2008, we established our first production facility, covering 5,000 square meters and staffed with 25 skilled workers.



Quality Management System Certification



Environmental management System certification



Occupational Health Management System Certification



Social responsibility review



Vision: To become the preferred supplier of retail display solutions for our customers.

# FACTORY OVERVIEW



Metal Processing



Sanding Production Line



Metal Processing Machines



5 Spray Painting House



Joinery Workshop

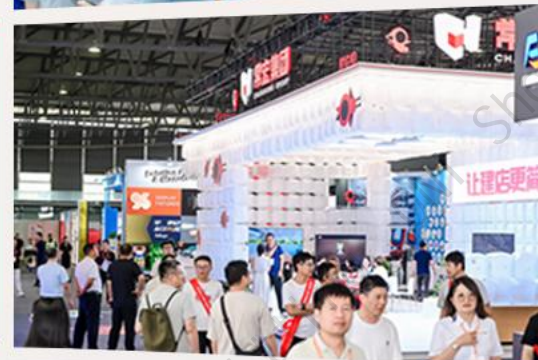
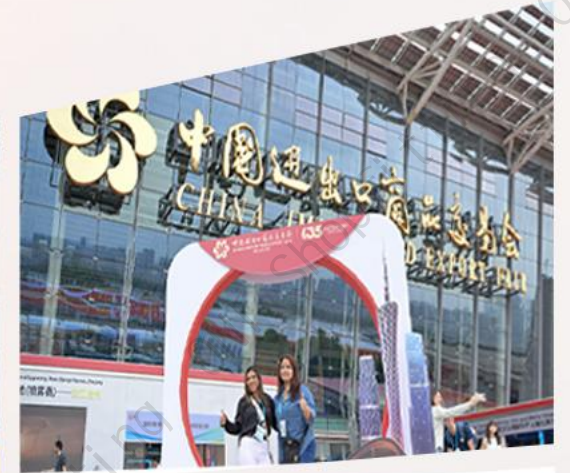


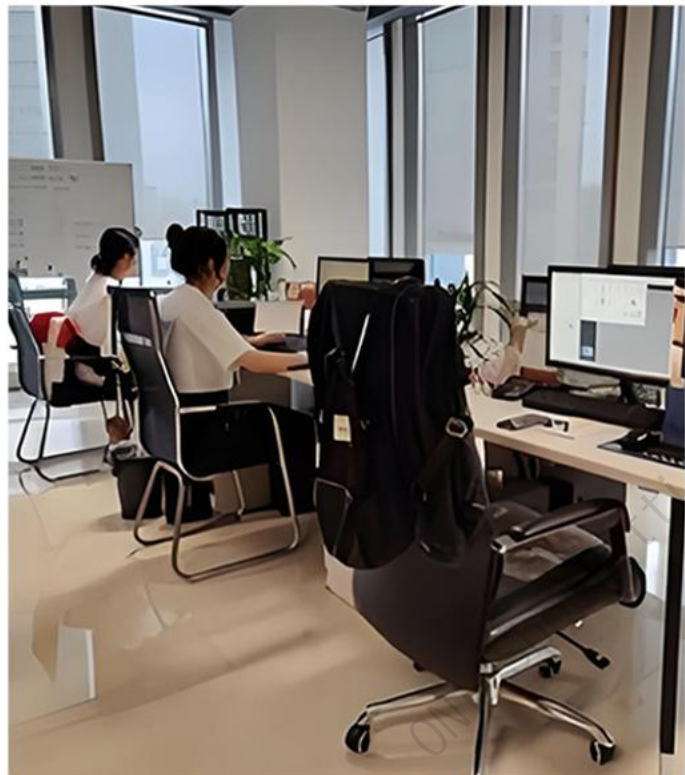
Assemble Workshop



## GLOBAL EXHIBITIONS

Leveraging exhibitions as anchor points to connect display cabinet supply chain opportunities worldwide.





**OUR TEAM**

OUR TEAM HARD WORKING  
HIGHLY MOTIVATED AND EFFICIENT  
AND REMAIN COMMITTED TO PROVIDE  
THE BEST SERVICE.

# WHAT ONI SHOPFITTING DO:



## DESIGN

From concept drawings to detailed construction drawings, we'll help transform your ideas into reality and ensure the end result exceeds expectation.



## Manufacture

ONI operates a modern 30,000 m<sup>2</sup> facility, which produces quality joinery & metal acrylic, etc. for any fit-out project we undertake. This is why we are so confident to our ability of making all the design



## Procurement

Based on our long term cooperation with different material suppliers, we can provide all material you will use for your shop opening, even including the lighting, flooring, wall paper, etc to enhance our cooperation,



## Installation

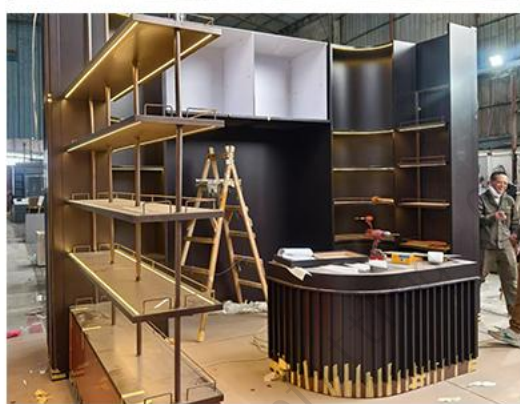
Shopfitting installation will finally decide control works closely without clients to implement a professional installation suited to your individual requirements.





CASE SHOW  
**MOBILE PLANET**  
successful case





**CASE SHOW**

**Liquor**

successful case



# CASE SHOW

successful case

# GEARNOTION

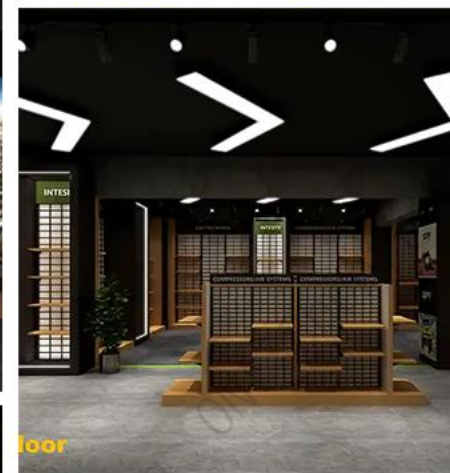
## 4X4



Store Front



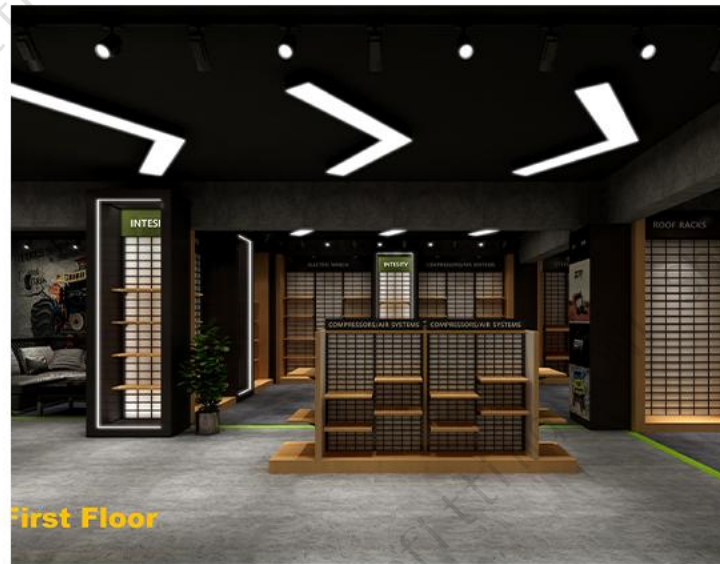
Ground Floor



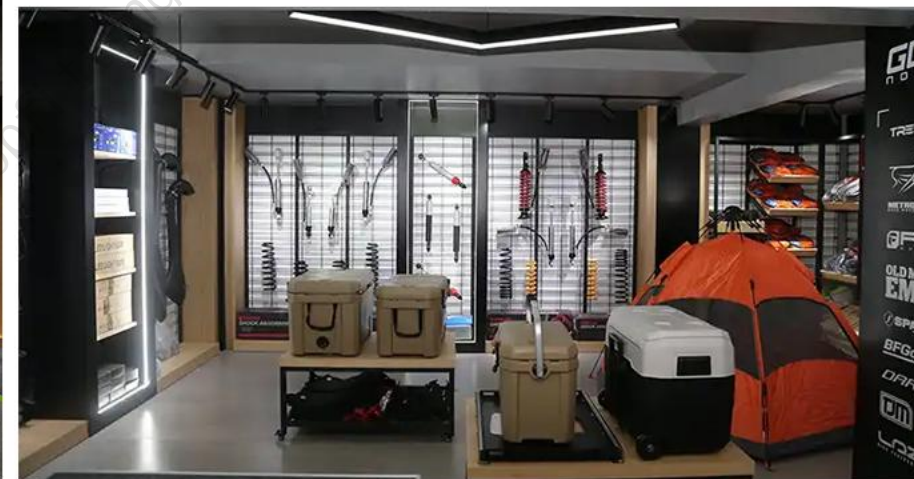
1st Floor

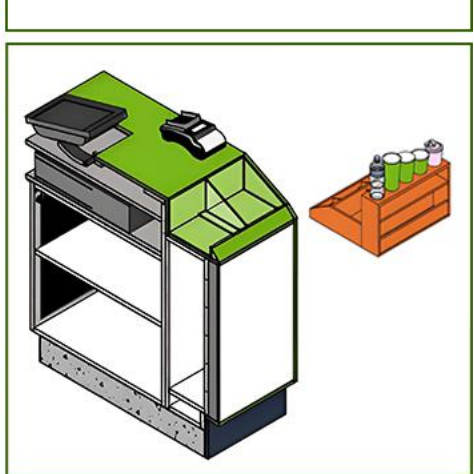
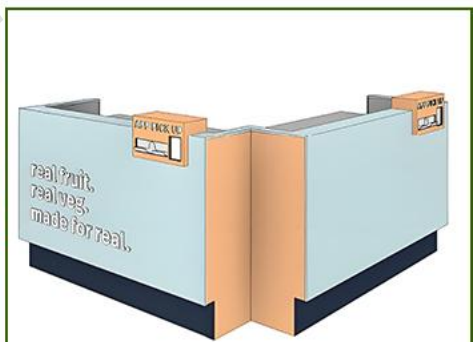
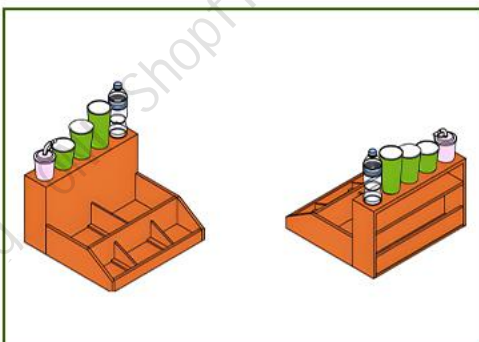
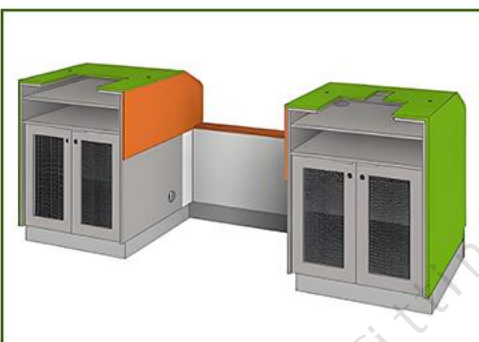
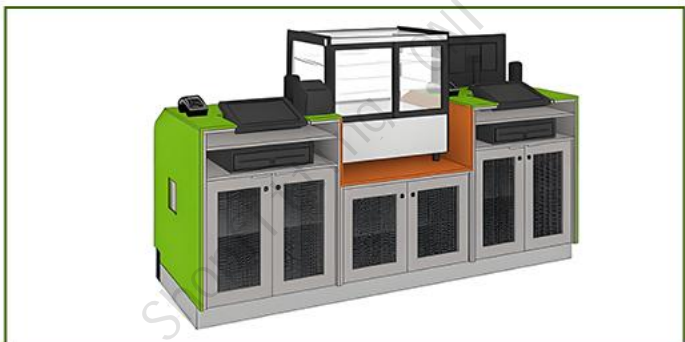
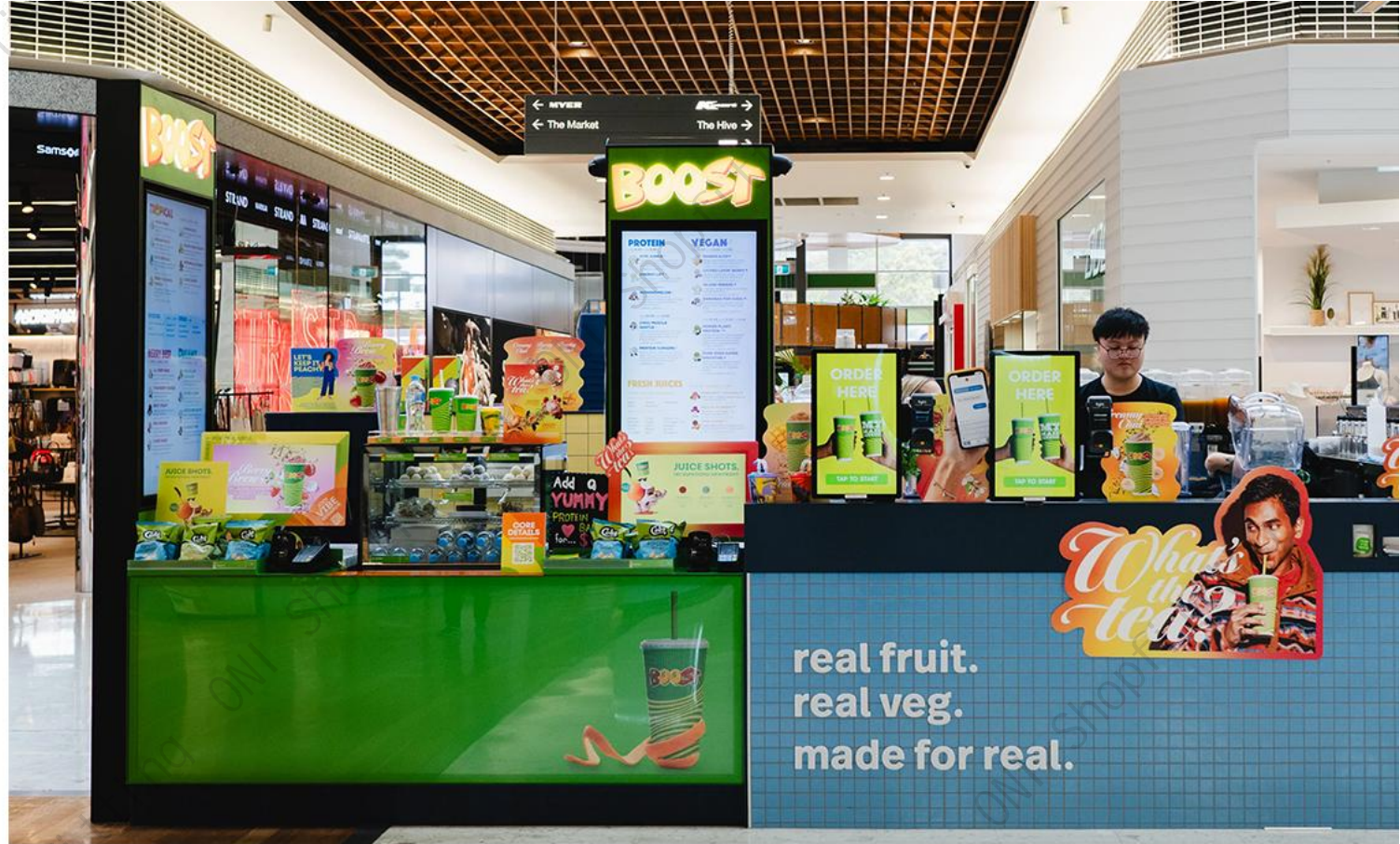


Store Front



First Floor





# HUAWEI Series



# HUAWEI Series



Front-opening wristband for easier switching; Laser-engraved logo with illumination, customisable



Premium roller guide rails

# HUAWEI Series



# HUAWEI Series

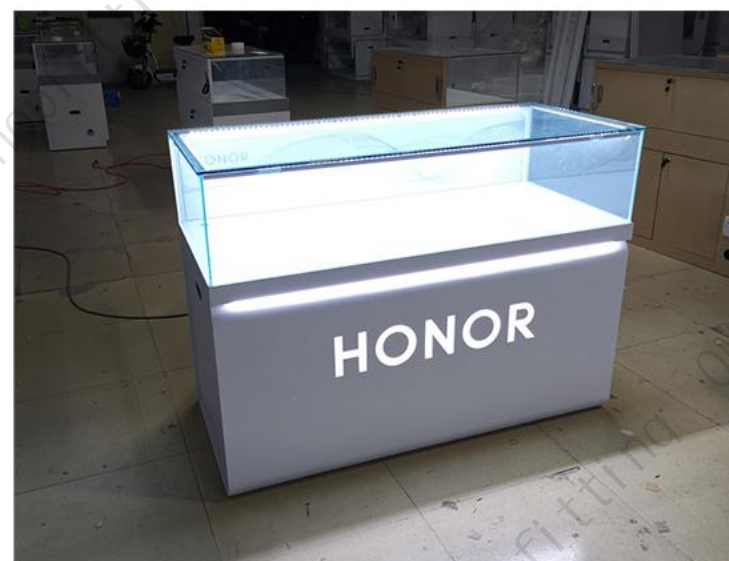


xiaomi Series





## HONOR Series



Recessed lighting strips illuminate within the groove, laser engraved.



Swing door design for easy access to products

# HONOR Series





HONOR Series



Customizable



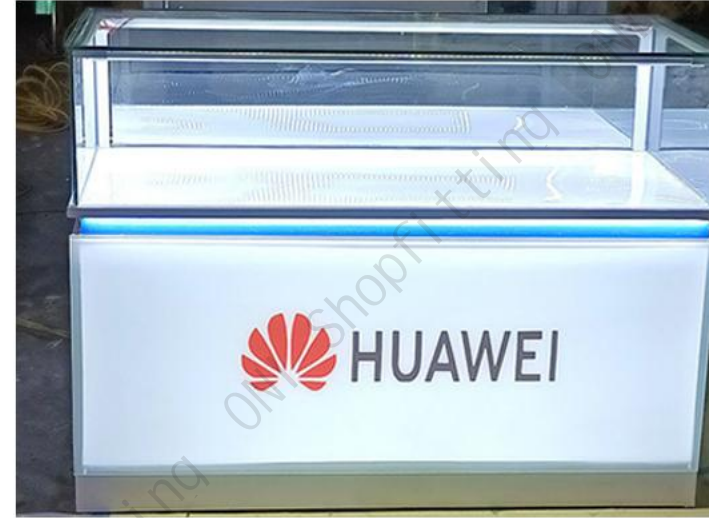
# Our Products



HUAWEI Series



vivo Series



HUAWEI Series



OPPO Series



OPPO Series



HUAWEI Series



HUAWEI Series



HUAWEI Series

# Our Products



vivo Series



vivo Iron Series



vivo Series



OPPO Series



HUAWEI Yellowwood Series



OPPO Series



vivo Series



vivo wood Series



GUANGZHOU ONI SHOPFITTING LIMITED  
Website : [www.onidisplay.com](http://www.onidisplay.com) | [www.onishopfitting.com](http://www.onishopfitting.com)

# COSMETICS DISPLAY CABINET

## Start your Customized Plan

**Contact Me :**

Name : CICI(Tang)

Phone/Whatsapp : +86 18620963396      Email : [sales1@onishopfitting.com](mailto:sales1@onishopfitting.com)

ONI Factory : Xiusheng Road, Taihe Town, Baiyun District, Guangzhou, China

**ONI**  
ONI Shopfitting