

ONI Shopfitting.
Better Displays for Better Retail



Luxury Watch Display Solutions

Custom Retail Fixtures Manufacturer

CONTACT US

 ONI Factory : Xiusheng Road, Taihe Town, Baiyun District, Guangzhou, China

 Phone/Whatsapp : +86 18620963396

 Email : sales1@onishopfitting.com

COMPANY PROFILE

Founded in 2000, ONI Shopfitting Ltd. is a leading manufacturer of retail store fixtures, commercial interior fitouts, and display furnitures in Guangzhou, China. With a team of over 200 employees and a 30,000-square-meter production facility, ONI utilizes advanced manufacturing equipments to produce over 300,000 sets of store fixtures annually, including counters, display shelvings, store joineries, restaurant dining tables, furnishings, and display cases designed for premium product showcases.



25⁺ Years

Over 25 years experience, More than 3000+ projects per years



220 +
With a team of over
200 employees



3000 +
30,000-square-meter
production facility

INNOVATION
PRAGMATISM

COLLABORATION
WIN-WIN

After years of dedicated R&D and production, the company has assembled a team of specialized technical personnel and product development experts.

Leveraging a dynamic team across R&D, manufacturing, marketing, and after-sales service, we employ internationally advanced production processes and technologies. Mastering multiple rigorous inspection techniques to ensure product precision and quality, we have progressively evolved into a renowned modern integrated manufacturer of display cabinets, display racks, and related products in China.

BUSINESS DISTRIBUTION

Primary Export Regions

North America: United States, Canada, Mexico, etc.
 Europe: United Kingdom, Germany, France, Italy, Switzerland, Sweden, etc.
 Southeast Asia: Thailand, India, etc.
 Middle East: United Arab Emirates, Qatar, Saudi Arabia, Dubai, Iraq, etc.
 Oceania: Australia, Melbourne, Sydney, New Zealand, etc.
 Africa: South Africa, etc.



The selection by numerous renowned brands stands as a testament to the high recognition of ONI. We will continue to uphold the spirit of professionalism, innovation, and excellence, collaborating with more brands to present more spectacular store displays to the world, ensuring global consumers enjoy successful shopping experiences.

200⁺



As an international group, we operate two stores in Guangzhou and Hong Kong and have established a strategic alliance with Dubai, dedicated to serving customers worldwide. We consistently tailor our service solutions to the specific needs of different markets and countries, ensuring a successful shopping experience for global customers.



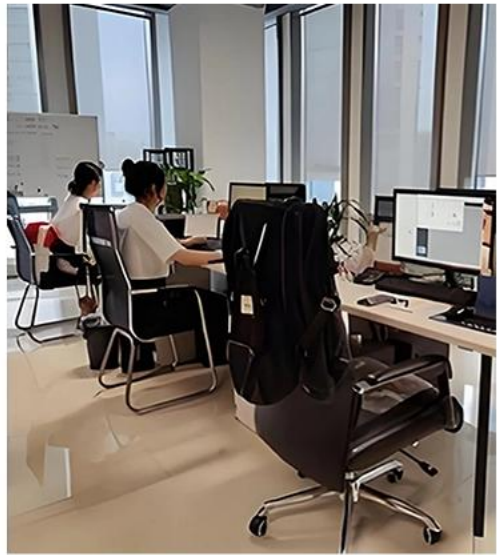
WHAT PROBLEMS CAN WE SOLVE?

- ⊗ No store design idea
- ⊗ Need fast project delivery
- ⊗ Complex mall requirements
- ⊗ High-end brand requirement
- ✔ We provide full 3D design
- ✔ Efficient production system
- ✔ Experienced project team
- ✔ Premium finishing

TEAM INTRODUCTION

OUR TEAM

OUR TEAM HARD WORKING
HIGHLY MOTIVATED AND EFFICIENT
AND REMAIN COMMITTED TO PROVIDE
THE BEST SERVICE.



PRODUCTION WORKSHOP/EQUIPMENT

CONTINUOUS INNOVATION IN PRODUCTS CHARTS THE
COURSE OF A 'COMPANY'S DEVELOPMENT, WHILE PRODUCT
QUALITY AND SERVICE EXCELLENCE SERVE AS THE LIFELINE
OF ITS GROWTH.



Metal Processing



5 Spray Painting House



Sanding Production Line



Assemble Workshop



Metal Processing Machines



Joinery Workshop



SERVICE EXCELLENCE



RETAIL STORE FIXTURES DESIGN AND MANUFACTURING

China. ONI Shopfitting has 25 years of rich experience, with a professional design, service, sales team, and exquisite craftsmanship to ensure that your exhibits are presented in the most outstanding way. Choosing ONI Shopfitting is not just choosing a display showcase, but also choosing to win at the starting line.

Free Quotation:

1. 3D generated images - including at least 5 images from different angles.
2. 360° Video for one space (add \$.199 for second space, if necessary)
3. Setting out drawings - Plan & Layout & Elevation
4. Joinery Production Drawings

ONE-STOP STORE RETAIL SERVICE

With over 25 years of experience, we have developed unique insights into shop fittings & retailing trends. We like to engage with our clients. We will give initial advice and ideas on how to tackle a project more efficiently, eliminate unnecessary costs and meet tight deadlines.



Retail Shop Layout & Space Planning

1. Full spatial planning
2. Traffic flow optimization
3. Strategic display placement
4. Assembly instructions
5. 3D visualization of layout



Technical Drawing Services

1. Electrical layout for display units
2. Detailed dimensional plans for contractors
3. Reflected ceiling and lighting integration
4. Retail design management drawings



Custom Shopfitting Design

1. Display solutions: shelving units, cabinets, counters, display cases, window displays, visual merchandising elements, etc.
2. Utilize our extensive resources to customize your needs.



3D Rendering for Shop Interior Design

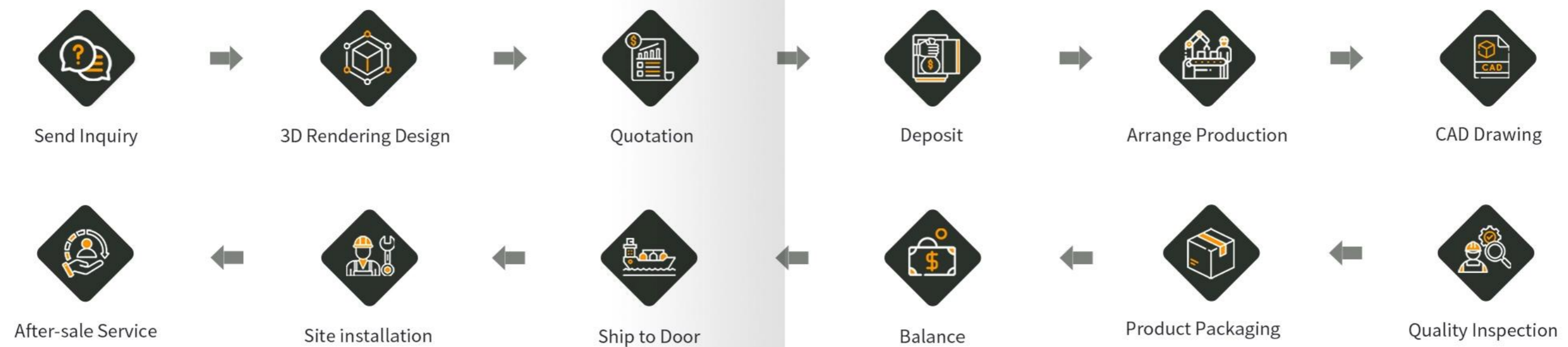
ONI Shopfitting Design specializes in transforming your project vision into reality through advanced color 3D rendering technology. This enables you to precisely preview the visual impact and spatial ambiance of your products before production begins.

DESIGN-PRODUCTION

ONI Shopfitting offers clients a one-stop comprehensive service with over 25 years of experience in all phases of projects from creation to completion.

PROJECT PROCESS

Throughout our collaboration, we will maintain close communication with our clients. Any questions or concerns will be promptly addressed to ensure the delivery of products that meet and exceed client expectations.



OUR CORE CAPABILITIES

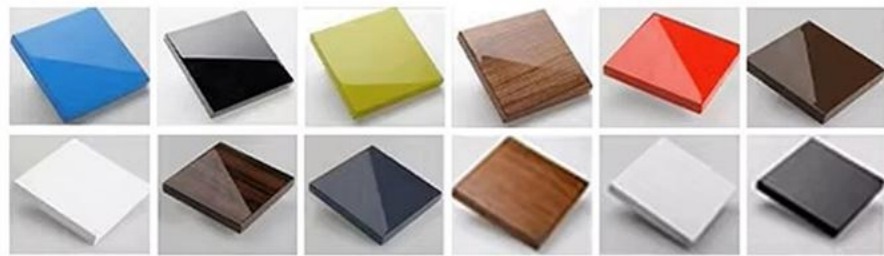
TEMPERED GLASS

A multi-stage advanced polishing process imparts a mirror-like lustre and elegant texture to the display cabinets. Ultra-clear tempered glass maximises the reproduction of the watch's texture and better highlights its sparkle under light, thereby more effectively capturing the consumer's attention.



PAINT

Eco-Friendly Formaldehyde-Free Paint, An environmentally conscious paint meeting international high standards, featuring an even and smooth finish with a delicate texture and brilliant luster.



Security System

Select premium hardware components to elevate the overall quality of the product, ensuring display cabinets combine aesthetic appeal with durability.



Lock

Electronic locks engineered specifically for display cabinets. Tested for 200,000 cycles of switching endurance. Sensor-activated unlocking ensures high security and reliable durability.



Hinge

Hydraulic damping door hinges, silent and smooth operation, uniform opening/closing force, premium 204 stainless steel construction, rust-resistant, durable and oxidation-resistant



Sliding Rails

Concealed track with dual slider design, multi-bearing construction for exceptional stability. High-speed operation, silent performance, corrosion-resistant, and easy replacement.



LED LIGHTS

Special LED spotlights designed for display cases, featuring high brightness without compromising product visibility, extended lifespan, and energy-efficient, eco-friendly operation.

PANEL

Panel materials are carefully selected from premium global sources. We utilize eco-friendly MOF, HOF, recycled wood panels, and PIAOT panels, with formaldehyde content significantly below national standards.



MDF(MDF)



Splint



The trihydrogen ammonia plateretardant plate



Flame



Veneer



Fireproof board

STAINLESS STEEL

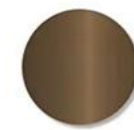
Premium stainless steel material, Stainless steel sheets offer high strength to withstand significant pressure; feature an aesthetically pleasing appearance with multiple surface finish options; are easy to process for shaping into various forms; promote hygiene and environmental sustainability by resisting bacterial growth; exhibit corrosion resistance for extended service life, reducing replacement costs; and are widely utilized across diverse industries.



Stainless steel plate



Mirror stainless steel



Matte stainless steel



Electroplating process



Square tube



Steel tube (Round tube)

Precision machining technology High-standard surface treatment Proficient welding techniques Advanced polishing technology



From Concept to
Completion · Creating
a Luxurious Experience

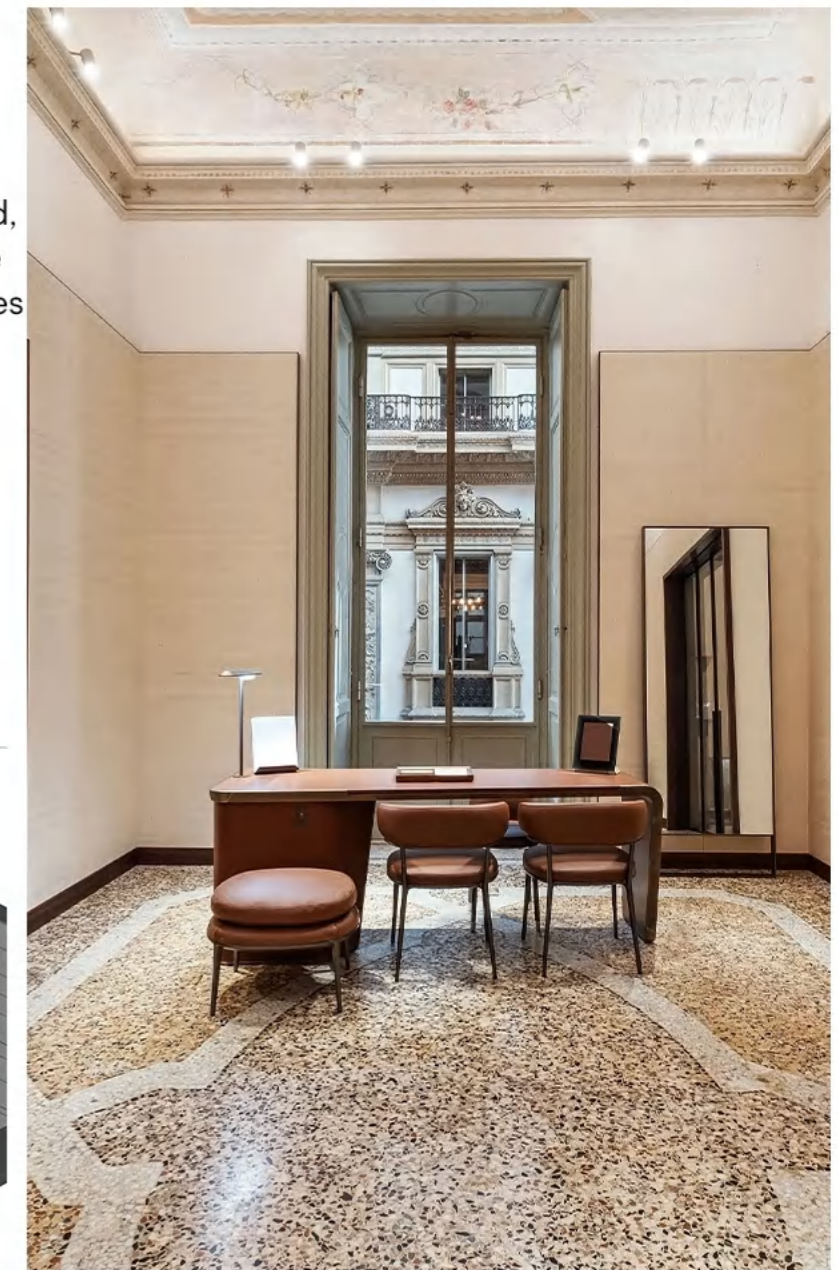


ITALIAN WATCH SHOP

Freestanding watch cabinet, leather-upholstered, with clean, straight lines and rounded edges; the stitching is clearly visible, and the edging features brushed and polished brass trim.

Watch display cabinet, with rounded corners, a leather top and brushed and polished brass edging.

Rounded-corner sales desk, with a leather top, built-in rotating drawer unit, and solid brushed and polished brass edging.



Project Name
Italian watch shop

Project Location
Italian

Project Type
Watch boutique



MONACO WATCH SHOP

Watch display cabinets and showcases, freestanding units .A staircase connects the ground floor to the first floor; the banisters are made of leather, wood and glass.Back-of-house office, kitchenetteAll interior fittings are bespoke; a turnkey project



Project Name
Monaco Watch Shop

Project Location
Monte Carlo, Monaco

Project Type
Watch boutique

PIZZA FLAGSHIP STORE

Watch display cabinets, counters and sales desks with integrated glass panels; curved walls with coverings

Project Name

Pizza Flagship Store

Project Location

Milan, Italy

Project Type

Flagship Watch Store





SWISS WATCH SHOP

The wall-mounted watch display cabinets feature bronze-coloured and brushed brass frames; the horizontal shelves are crafted from American walnut.

The partition wall between the VIP lounge and the sales area, freestanding furniture, such as floor-standing watch display cabinets, American walnut display counters, seating and bespoke sofas

Project Name

Swiss watch shop

Project Location

Basel, Switzerland

Project Type

Watch shop refurbishment





ROCA WATCH SHOP, ITALY

A watch display cabinet crafted from walnut and polished brass, with a central section featuring walnut slats and safety glass, and a large display case; a display counter in walnut and leather. Freestanding furniture: a 'watch bar', tables and stools, VIP area: curved watch display cabinet, wall panelling, hinged doors, and a sofa.



Project Name
Swiss watch shop

Project Location
Basel, Switzerland

Project Type
Watch shop refurbishment

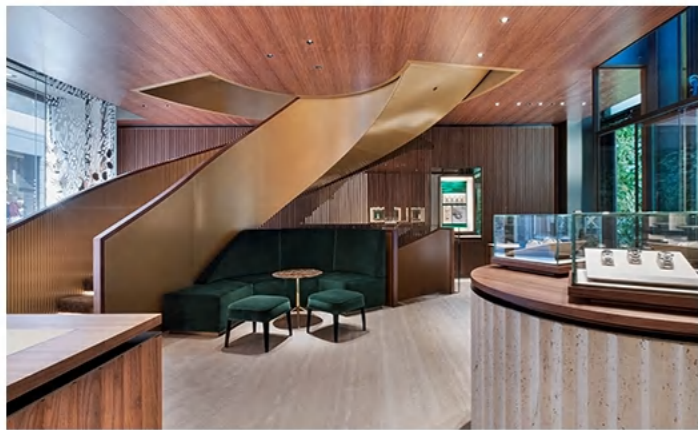


GARMISCH, GERMANY

Display window decorations in the exhibition and outdoor areas;
Sales and checkout counters, as well as display cabinets, finished in brass and leather; a recessed seating area



Project Name	Project Location	Project Type
Garmisch, Germany	Garmisch-Partenkirchen, Germany	Luxury watch boutique



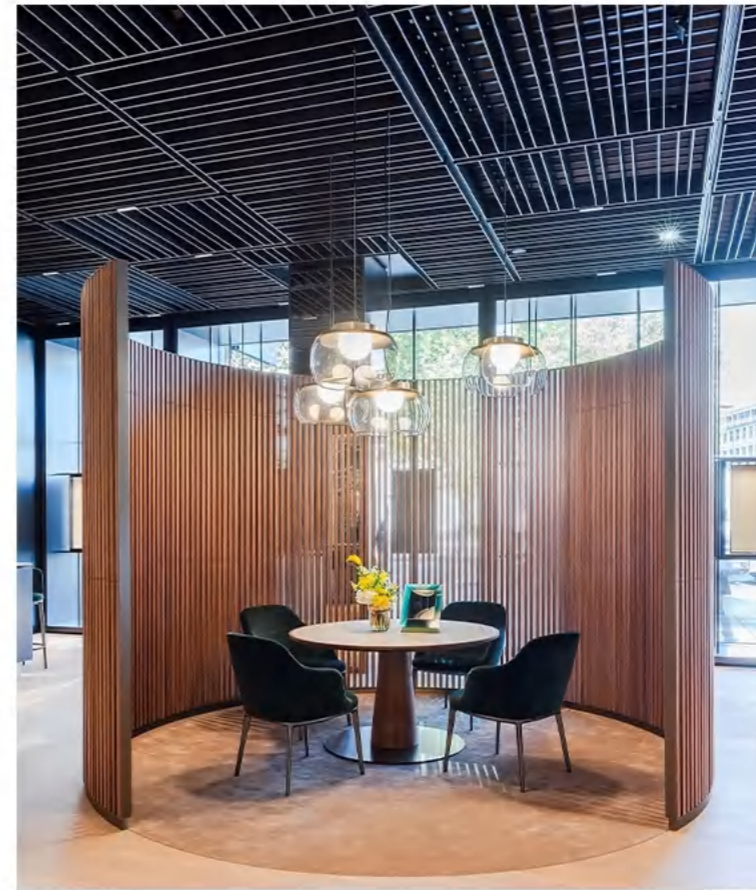
PISA CLOCK

Sales desks; V-shaped Canaletto wood-panelled counters; solid walnut-framed leather-topped circular counters; travertine-panelled and grooved circular counters; wall-mounted display cabinets and alcoves; wall finishes in marble, brass and walnut

Project Name
Pisa Clock

Project Location
Via Monte Napoleone, Milan, Italy

Project Type
Luxury watch boutique



GREEN ALPS

With walnut wood slats and luxury stone walls as the base, custom curved and linear glass display cases form the core display system. Built-in lighting precisely showcases the texture of watches, walnut shelves and embedded niches create multi-level display areas, and curved slat partitions create private consultation spaces. Dark green velvet seats and metal details enhance high-end texture, presenting a luxury watch retail scene that balances display and experience.

Project Name
Green Alps

Project Location
United Kingdom

Project Type
Watch boutique



OSMAN WATCH SHOP

Display cabinets with vertical grooves, curved display cabinets with V-shaped panels, and till counters; A walnut bar counter with a travertine cladding, leather worktop, built-in display cases, sales counters, display cabinets, freestanding display stands, a back-office area and a watchmaker's workshop

Project Name

Osman Watch Shop

Project Location

Paris, France

Project Type

Luxury watch boutique



MARASSI GALLERY

An oval-shaped bar counter, featuring seating alcoves in the curved section, is adorned with walnut 'V'-shaped panelling and finished with a gold lacquer. The reception desk features a walnut frame, a travertine worktop, and is surrounded by bronze and brushed brass skirting. A walnut bar cabinet, featuring vertical posts and horizontal shelves, is framed by bronze and brushed brass trim.



Project Name	Project Location	Project Type
Marassi Gallery	Manama, Bahrain	Luxury watch boutique



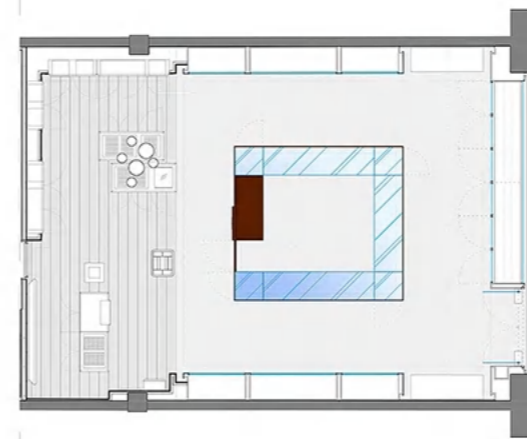
CASTEJÓN AFFORDABLE LUXURY WATCH KIOSK

With dark walnut wood as the base, custom full-height glass display cases and central island cases form the core display system. Full transparent glass with LED bottom lights precisely showcase the texture of watches, layered storage compartments and ergonomic height design balance display and shopping experience, paired with brand-specific logo back panels, creating an efficient and high-end multi-brand watch retail scene.

Project Name
Castejón

Project Location
Paris, France

Project Type
Luxury watch kiosk





PANERAI

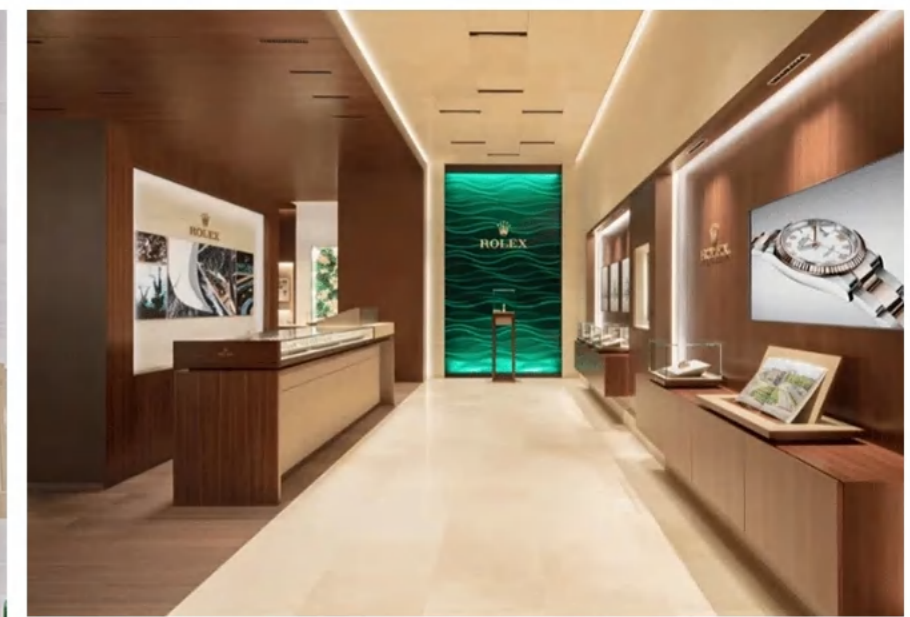
The overall design draws inspiration from the Italian lifestyle, encouraging watch enthusiasts to make purchases. In keeping with Panerai's target customer base, the store exudes a distinctly masculine atmosphere, reflected in the use of dark panelling and a cool colour palette.



Project Name	Project Location	Project Type
PANERAI	New Hudson Campus	Luxury watch boutique

ROLEX

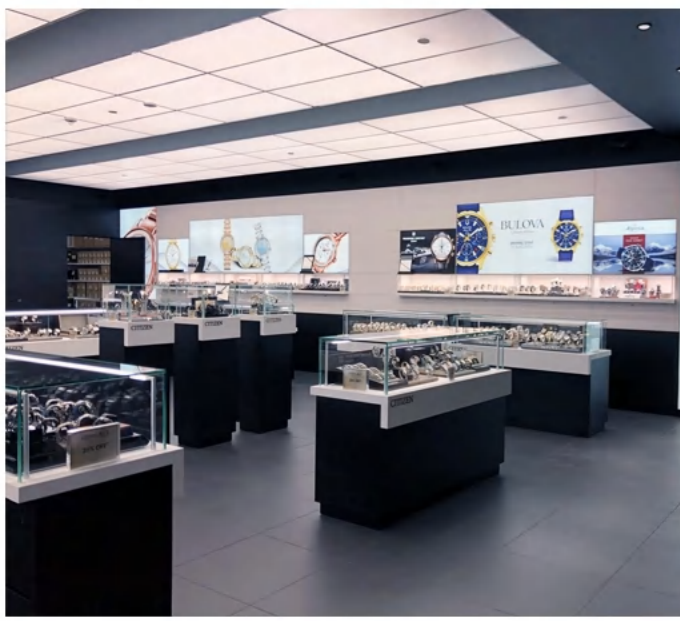
Centered on brand tone, custom walnut display cases, glass display platforms and niche display walls unify function and aesthetics. Built-in lighting systems precisely showcase watch texture, brand-exclusive art installations and green soft furnishings enhance recognition, and consultation area seats paired with display case circulation planning balance experience and display, presenting a watch retail space with both brand recognition and high-end texture.



SEIKO—REFERENCE FOR SHOPS IN DIFFERENT REGIONS

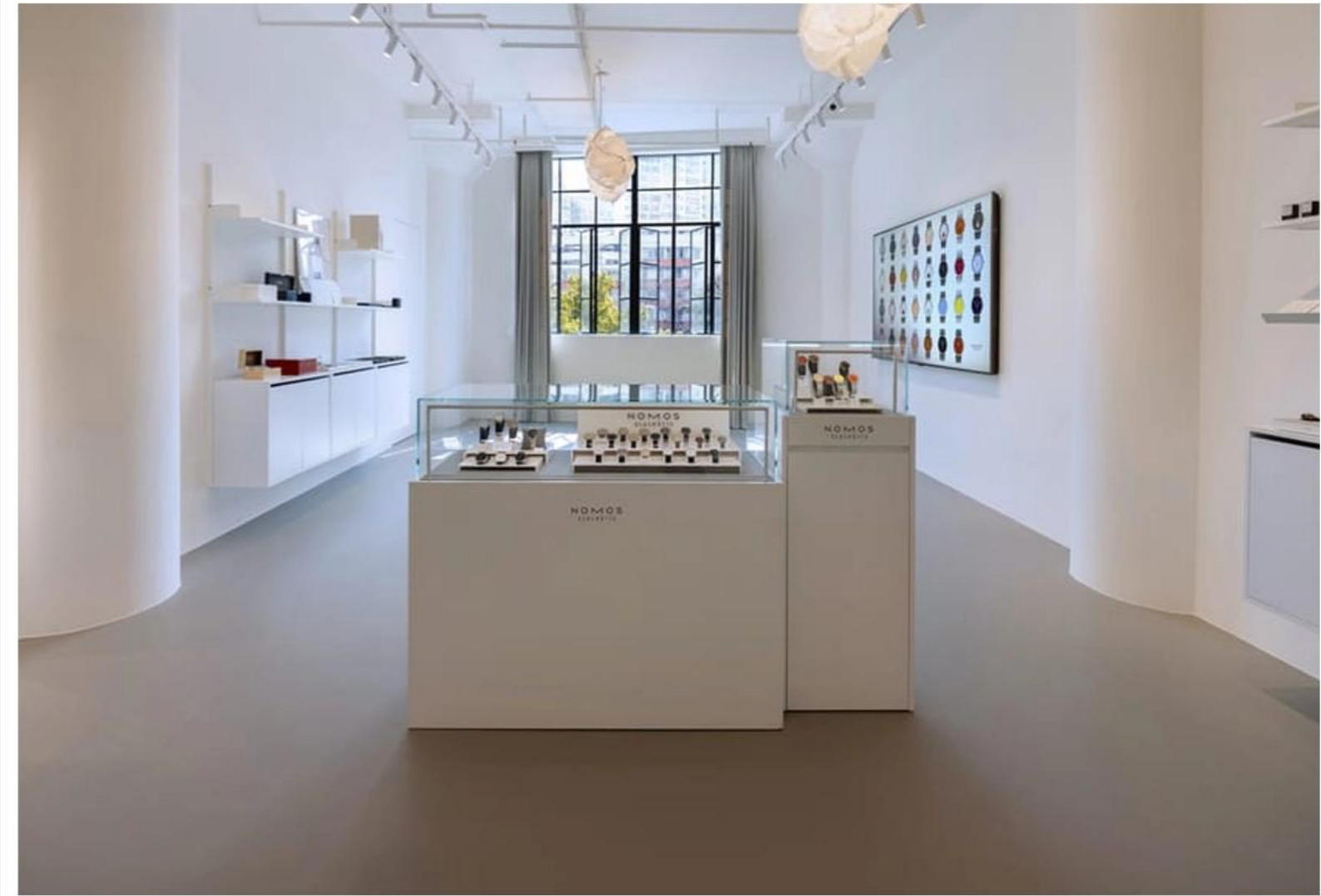


CITIZEN—REFERENCE FOR SHOPS IN DIFFERENT REGIONS



ORIS—REFERENCE FOR SHOPS IN DIFFERENT REGIONS

CITIZEN—REFERENCE FOR SHOPS IN DIFFERENT REGIONS



NOMOS—REFERENCE FOR SHOPS IN DIFFERENT REGIONS

JUNGHANS—REFERENCE FOR SHOPS IN DIFFERENT REGIONS



VENEZIANICO—REFERENCE FOR SHOPS IN DIFFERENT REGIONS





Luxury Watch Display Cabinets

Luxury Watch Display Cabinets

For reference only; custom production available



LWD - 012
Luxury Watch Display Cabinets



LWD - 013
Island Display Cabinet Series



LWD - 014
Luxury Watch Display Cabinets



LWD - 015
Luxury Watch Display Cabinets



LWD - 016
Island Display Cabinet Series



LWD - 017
Luxury Watch Display Cabinets

Luxury Watch Display Cabinets

For reference only; custom production available



LWD - 018

Luxury Watch Display Cabinets



LWD - 019

Island Display Cabinet Series



LWD - 024

Luxury Watch Display Cabinets



LWD - 025

Island Display Cabinet Series



LWD - 020

Luxury Watch Display Cabinets



LWD - 021

Luxury Watch Display Cabinets



LWD - 026

Luxury Watch Display Cabinets



LWD - 027

Luxury Watch Display Cabinets



LWD - 022

Island Display Cabinet Series



LWD - 023

Luxury Watch Display Cabinets



LWD - 028

Island Display Cabinet Series



LWD - 029

Luxury Watch Display Cabinets

The image shows a contemporary jewelry store interior. In the foreground, there are several glass display cases with dark wood bases. One case prominently displays a collection of watches. The store has large windows on the left side, offering a view of an outdoor area with greenery. The ceiling is white with a black track lighting system. In the background, there are more display cases and a counter area. The overall design is clean and modern.

Watch Kiosk Displays

Watch Kiosk Displays

For reference only; custom production available



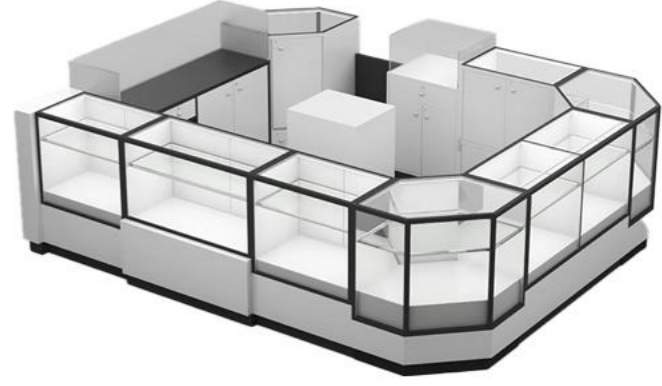
WKD - 135
Watch Kiosk Displays



WKD - 138
Watch Kiosk Displays



WKD - 165
Watch Kiosk Displays



WKD - 166
Watch Kiosk Displays



WKD - 168
Watch Kiosk Displays



WKD - 169
Watch Kiosk Displays

Watch Kiosk Displays

For reference only; custom production available



WKD - 177
Watch Kiosk Displays



WKD - 178
Watch Kiosk Displays



WKD - 249
Watch Kiosk Displays



WKD - 255
Watch Kiosk Displays



WKD - 245
Watch Kiosk Displays



WKD - 246
Watch Kiosk Displays



WKD - 256
Watch Kiosk Displays



WKD - 266
Watch Kiosk Displays



Watch Wall Display Units

Watch Wall Display Units

For reference only; custom production available



WWDU - 412

Watch Wall Display Units



WWDU - 415

Watch Wall Display Units



WWDU - 428

Watch Wall Display Units



WWDU - 466

Watch Wall Display Units



WWDU - 467

Watch Wall Display Units



WWDU - 468

Watch Wall Display Units

Upright display cases

For reference only; custom production available



UDC - 345

Upright display cases



UDC - 348

Upright display cases



UDC - 358

Upright display cases



UDC - 359

Upright display cases



UDC - 360

Upright display cases



UDC - 361

Upright display cases



Upright display cases

GUANGZHOU ONI SHOPFITTING LIMITED

ONI Factory : Xiusheng Road, Taihe Town, Baiyun District, Guangzhou, China

Start your Customized Plan



Contact Me :

Name : Ms. CICI TANG

Phone/Whatsapp : +86 18620963396 Email : sales1@onishopfitting.com

Website : www.onidisplay.com | www.onishopfitting.com

ONI
ONI Shopfitting