



ONI SHOPFITTING CLOTHING DISPLAY CATALOG





ABOUT US

Founded in 2000, ONI Shopfitting Ltd. is a leading manufacturer of retail store fixtures, commercial interior fitouts, and display furnitures in Guangzhou, China. With a team of over 200 employees and a 30,000-square-meter production facility, ONI utilizes advanced manufacturing equipments to produce over 300,000 sets of store fixtures annually, including counters, display shelvings, store joineries, restaurant dining tables, furnishings, and display cases designed for premium product showcases.

After years of dedicated R&D and production, the company has assembled a team of specialized technical personnel and product development experts. Leveraging a dynamic team across R&D, manufacturing, marketing, and after-sales service, we employ internationally advanced production processes and technologies. Mastering multiple rigorous inspection techniques to ensure product precision and quality, we have progressively evolved into a renowned modern integrated manufacturer of display cabinets, display racks, and related products in China.



25 Years
Over 25 years
experience



30,000 m²
More than 3000+
projects per years



220 +
With a team of over
200 employees



3000 +
30,000-square-meter
production facility

DEVELOPMENT HISTORY

• 2025-Strategic Expansion: ONI MENA Team Formed

In 2024, ONI established the ONI MENA Team, This strategic move enables us to better understand and serve the needs of clients in the Middle East and North Africa, marking a significant step in ONI's international expansion strategy.

• 2020-2023-Steady Growth: Serving Global Clients

From 2020 to 2023, we consistently exported high-quality fixtures and shopfitting solutions to clients across Europe, the Americas, the Middle East, and Southeast Asia, reinforcing long-term partnerships and expanding our global footprint.

• 2018-Major Leap: Fully Upgraded Factory

To meet growing global demand for quality and speed, we relocated in 2018 to a newly built, state-of-the-art facility of over 35,000 square meters, over 250 employees, This marked a major milestone in ONI's modernization and scaling efforts.

• 2016-Brand Elevation: ONI Headquarters Established

In 2016, ONI Shopfitting officially established its headquarters in Guangzhou, China. This move allowed us to integrate design, production, sales, and operations under one roof. It marked our evolution into a professional and internationally-oriented commercial environment solution provider.

• 2013-Capacity Expansion: Factory Growth

We significantly upgraded our production capabilities in 2013. The factory was expanded to 15,000 square meters and our workforce grew to 150 employees. We also improved our facilities and management systems.

• 2010-Creative Drive: Design Department Founded

ONI formed an independent Creative Design Team in 2010. This department focused on visual planning and product innovation for commercial spaces. It was a key milestone in our transformation from a traditional manufacturer to a design-driven enterprise.

• 2008-Foundation: Factory Established

In 2008, we established our first production facility covering 5,000 square meters and staffed with 25 skilled workers.

CERTIFICATE



Quality Management System Certification



Environmental management System certification



Occupational Health Management System Certification



Social responsibility review



Vision: To become the preferred supplier of retail display solutions for our customers.

INTRODUCTION

Company Culture

Our Mission

We exist to empower global retail brands with innovative, high-quality store fixtures that elevate their visual merchandising while optimizing costs and operational efficiency. As dedicated Store Fixture Specialist, we deliver tailored solutions that blend craftsmanship, technology, and sustainability to transform retail spaces into immersive retail brand experiences.

Corporate Vision

To become a global leader among the top 10 store fixture suppliers worldwide, recognized as the go-to partner for retailers seeking cutting-edge design, reliability, and value-driven innovation. We aspire to set industry benchmarks by redefining how retail environments are built, ensuring our clients thrive in an ever-evolving market.

Core Values

Serving customers people-oriented honest and pragmatic lean innovation



Business Philosophy

Treat People with Integrity Quality is Supreme Profit from Trust

Customer

Customer satisfaction and success is the only measure of our work performance.

Staff

Implement an organizational system that develops from within, Select, promote and reward high-performing employees, Employees are the company's precious wealth, The improvement of staff quality and professional knowledge level is the growth of the company's wealth.

Products

Continuously innovative products are the trajectory of the company's development and product quality and service quality are the lifeblood of the company's development.

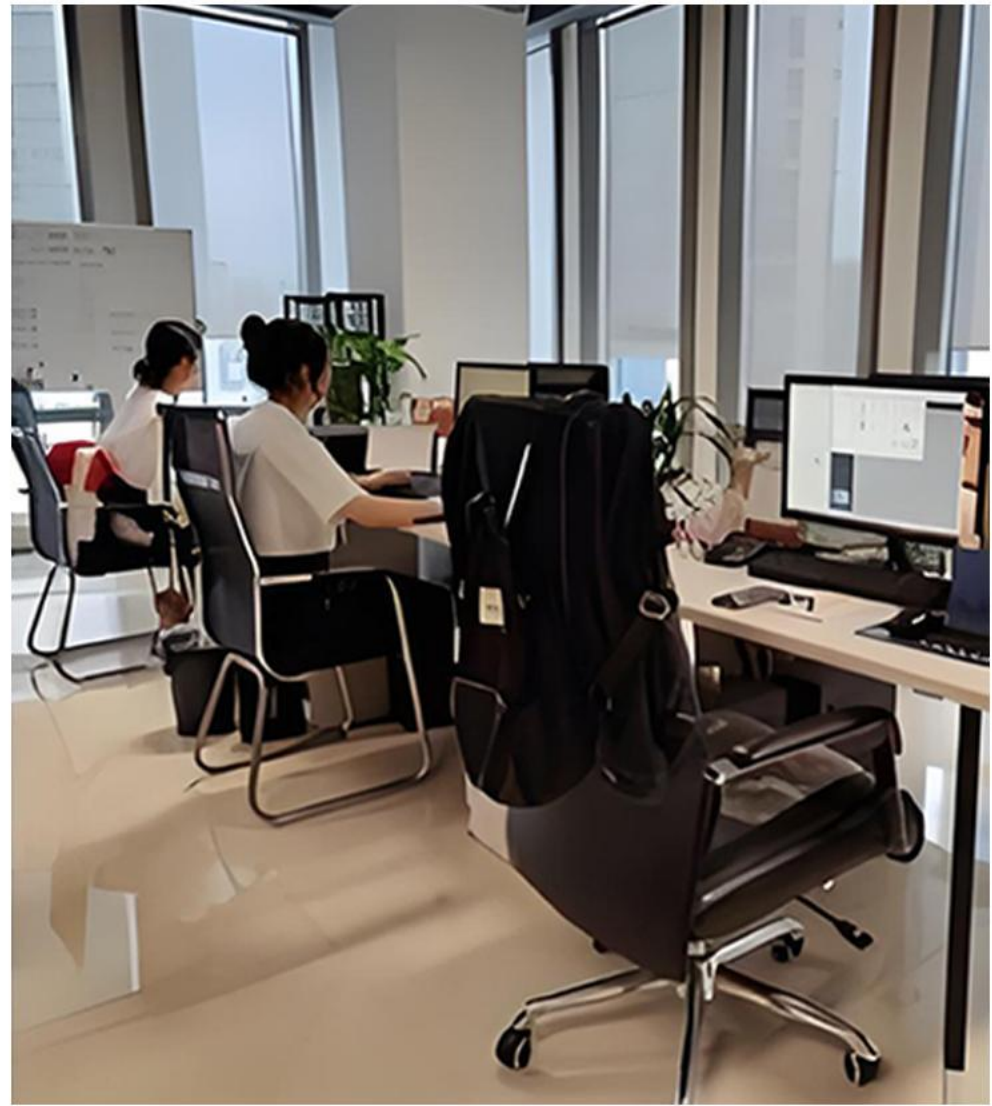
Product Brand

Establish a century-old great cause and build a century-old brand.

Market

Sincere cooperation win-win situation develop the most suitable market and strive for the largest share.

TEAM INTRODUCTION



OUR TEAM

OUR TEAM HARD WORKING
HIGHLY MOTIVATED AND EFFICIENT
AND REMAIN COMMITTED TO PROVIDE
THE BEST SERVICE.



PRODUCTION WORKSHOP/EQUIPMENT



Metal Processing



5 Spray Painting House



Sanding Production Line



Assemble Workshop



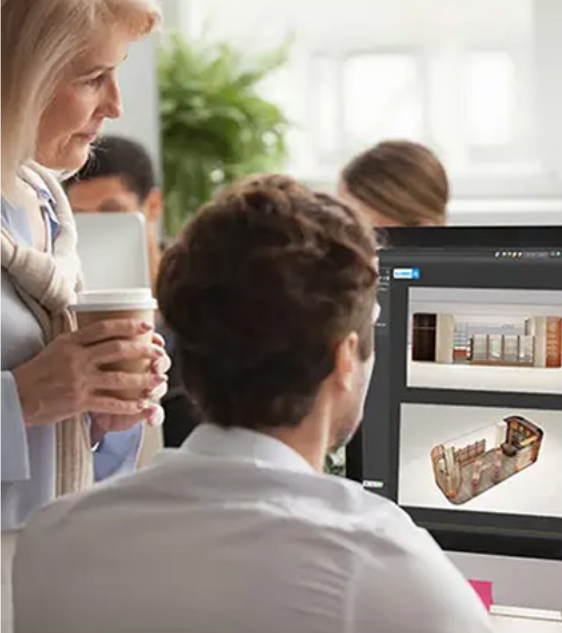
Metal Processing Machines



Joinery Workshop


SERVICE EXCELLENCE

With over 25 years of experience, we have developed unique insights into shop fittings & retailing trends. We like to engage with our clients. We will give initial advice and ideas on how to tackle a project more efficiently, eliminate unnecessary costs and meet tight deadlines.



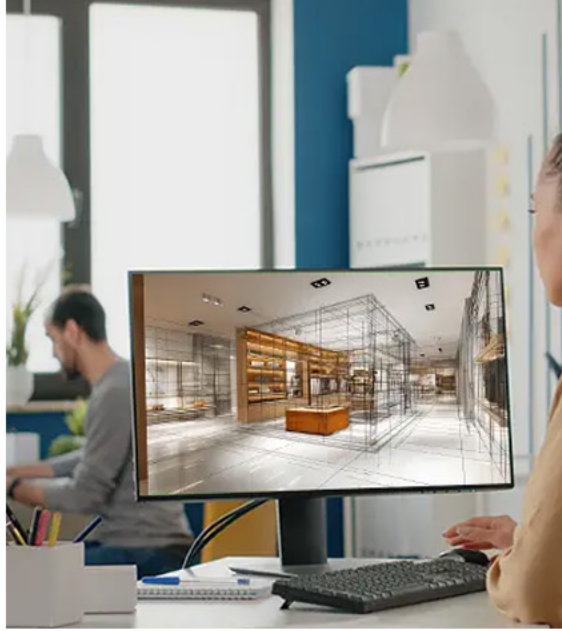
Retail Shop Layout & Space Planning

- 1.Full spatial planning
- 2.Traffic flow optimization
- 3.Strategic display placement
- 4.Assembly instructions
- 5.3D visualization of layout



Technical Drawing Services

- 1.Electrical layout for display units
- 2.Detailed dimensional plans for contractors
- 3.Reflected ceiling and lighting integration
- 4.Retail design management drawings



Custom Shopfitting Design

1. Display solutions: shelving units, cabinets, counters,, display cases, window displays, visual merchandising elements, etc.
- 2.Utilize our extensive resources to customize your needs.

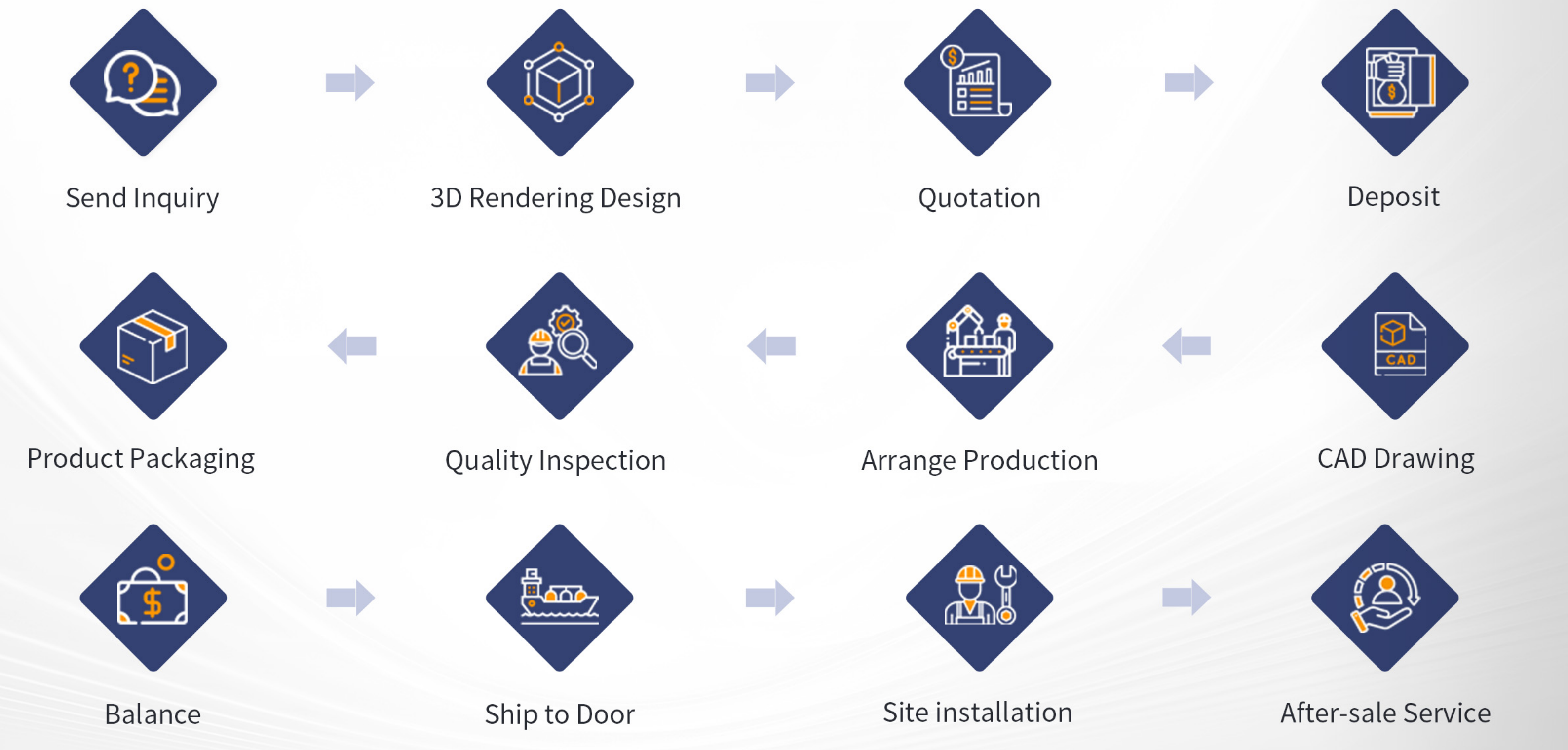


3D Rendering for Shop Interior Design

ONI Shopfitting Design specializes in transforming your project vision into reality through advanced color 3D rendering technology. This enables you to precisely preview the visual impact and spatial ambiance of your products before production begins.

PROJECT PROCESS

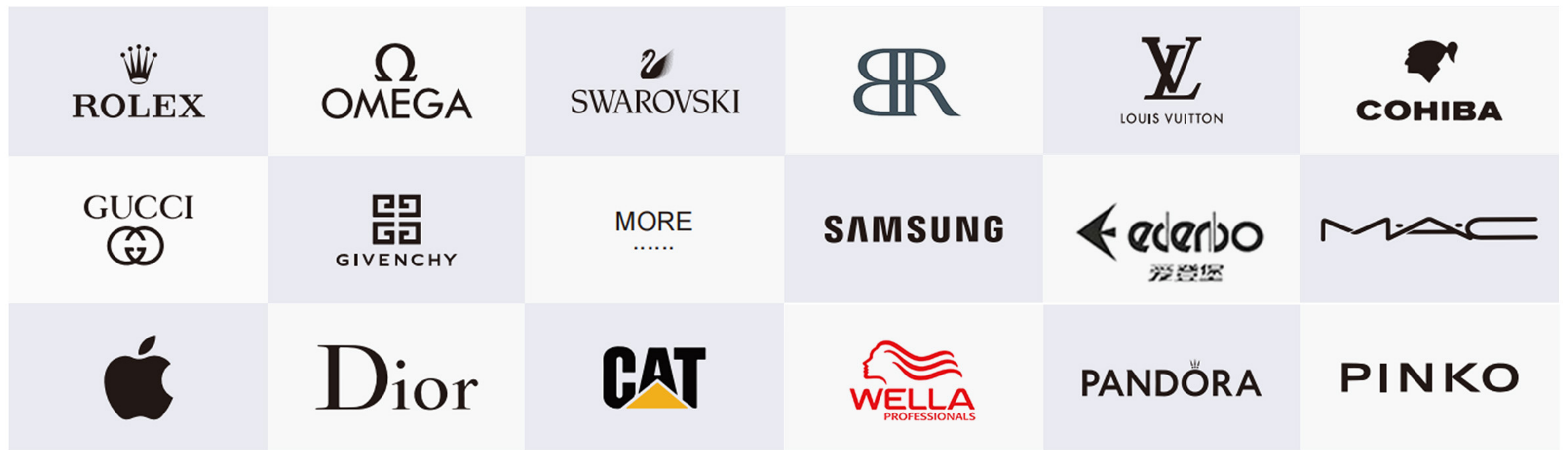
Throughout our collaboration, we will maintain close communication with our clients. Any questions or concerns will be promptly addressed to ensure the delivery of products that meet and exceed client expectations.



BUSINESS DISTRIBUTION

The selection by numerous renowned brands stands as a testament to the high recognition of ONI. We will continue to uphold the spirit of professionalism, innovation, and excellence, collaborating with more brands to present more spectacular store displays to the world, ensuring global consumers enjoy successful shopping experiences.

200+



Primary Export Regions

- North America:** United States, Canada, Mexico, etc.
- Europe:** United Kingdom, Germany, France, Italy, Switzerland, Sweden, etc.
- Southeast Asia:** Thailand, India, etc.
- Middle East:** United Arab Emirates, Qatar, Saudi Arabia, Dubai, etc.
- Oceania:** Australia , Melbourne, Sydney), New Zealand, etc.
- Africa:** South Africa, etc.

As an international group, we operate two stores in Guangzhou and Hong Kong and have established a strategic alliance with Dubai, dedicated to serving customers worldwide. We consistently tailor our service solutions to the specific needs of different markets and countries, ensuring a successful shopping experience for global customers.



CUSTOMIZED SERVICES

One Stop Service

Employing top talent to create the highest quality, deliver the finest service, and reap the most substantial rewards.

Free Quotation

- 3D generated images - including at least 5 images from different angles.
- 360°Video for one space (add \$199 for second space, if necessary)
- Setting out drawings - Plan & Layout & Elevation
- Joinery Production Drawings



Professional Consulting

We will give initial advice and ideas about how to tackle a project more efficiently.



Retail Store Floor Plan

We analyze your demand and optimize your space layout to increase customer experience.



3D DISPLAY DESIGN

With a thorough understanding of the latest design trends, we create incredible designs to suit your space and brand.



Manufacturing

Manufacturing at our fully equipped factory in China, we produce top quality fixtures.



Global Delivery

We take care of all the logistics to provide you with worry-free, hassle-free delivery.



Retail Display Installation

Our local team of professional installer guarantee customer satisfaction and offer maintenance services if needed.

Our Advantages

Independent R&D

There are more than 30 design and technology research and development talents, and more than 200 independent research and development products every year.

Production Capacity

Our manufacturing facility spans over 30,000 square meters, specializing in counters, display racks, retail joinery, and custom display cases designed for premium product showcases.

Lean Manufacturing

Exceptional quality management capabilities, implementing lean production practices, and certified under ISO quality systems.

Technical Expertise

Our core team brings over 25 years of production experience, driving advancements in intelligent automation technology.





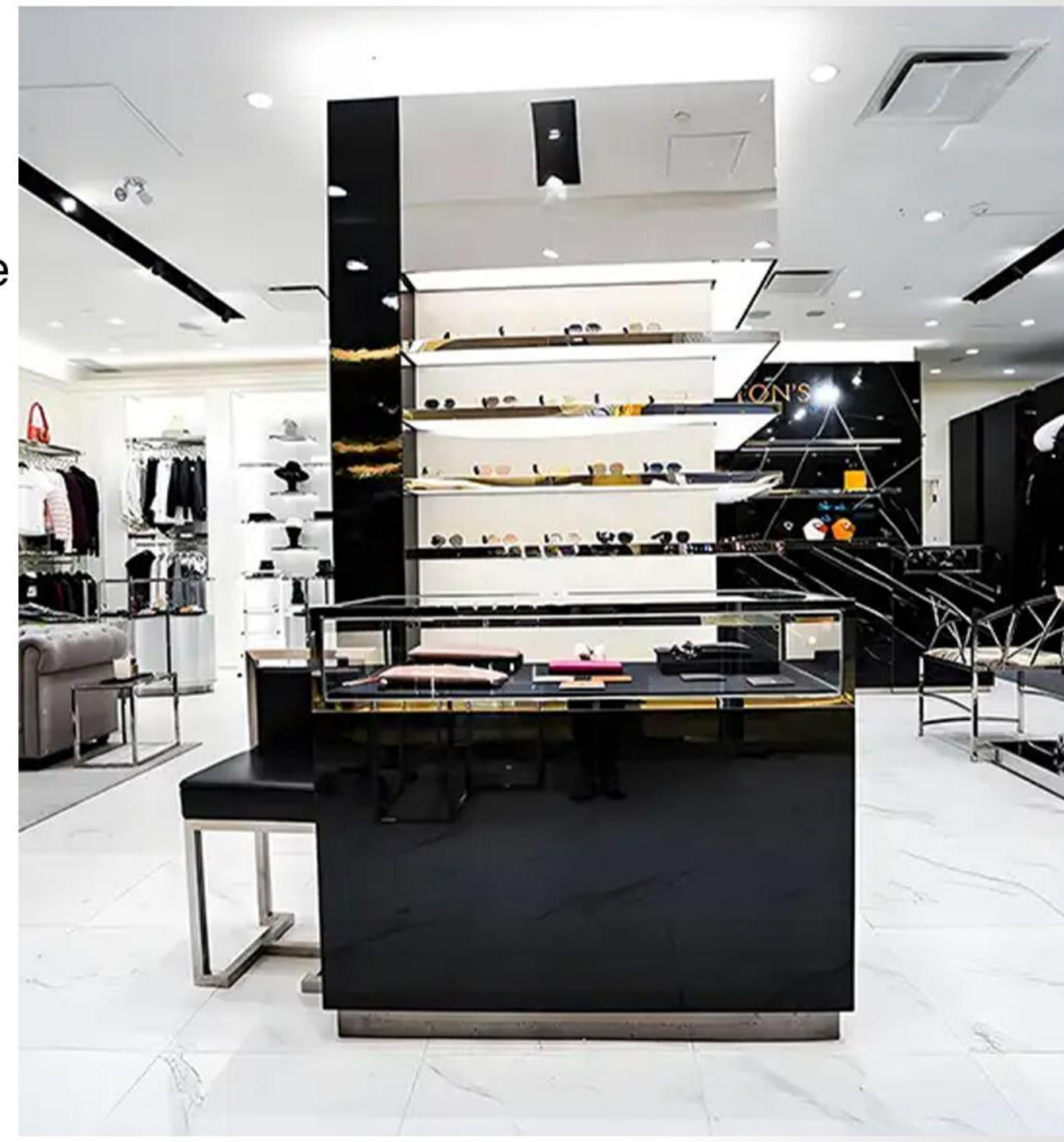
**PROJECTS-RETAIL
STORE FIXTURE
OUR CASE**

COLTON'S COUTURE

CASE SHOW

successful cases of
clothing store

The store exudes a high-end and fashionable atmosphere, with clothing display racks and display facilities carefully arranged. Various clothes are displayed in an orderly manner in exclusive display areas, and with the comfortable rest area, each piece of clothing can fully show its own style, and it also creates a pleasant shopping environment for customers, stimulating their desire to try on and buy.



CASE SHOW

successful cases of clothing store



CASE SHOW

successful cases of clothing store

OSSIMORO

CASE SHOW

successful cases of clothing store

The women's apparel store's display area centers on light wood tones, warm white lighting, and soft-hued garments to cultivate a soothing, healing ambiance: Light wood display shelves are arranged in tiers— upper shelves hold neatly folded clothing and handbags, while middle tiers feature metal hanging rods.



LUXURY FASHION EXHIBITION SPACE

CASE SHOW

successful cases of clothing store

This apparel display area centers on a black metal frame + gold accent trim + industrial-style mesh back panel to create an “industrial-chic” ambiance. The display area features a black metal frame, gold accent strips, and an industrial-style mesh back panel, creating an “industrial-chic” ambiance.

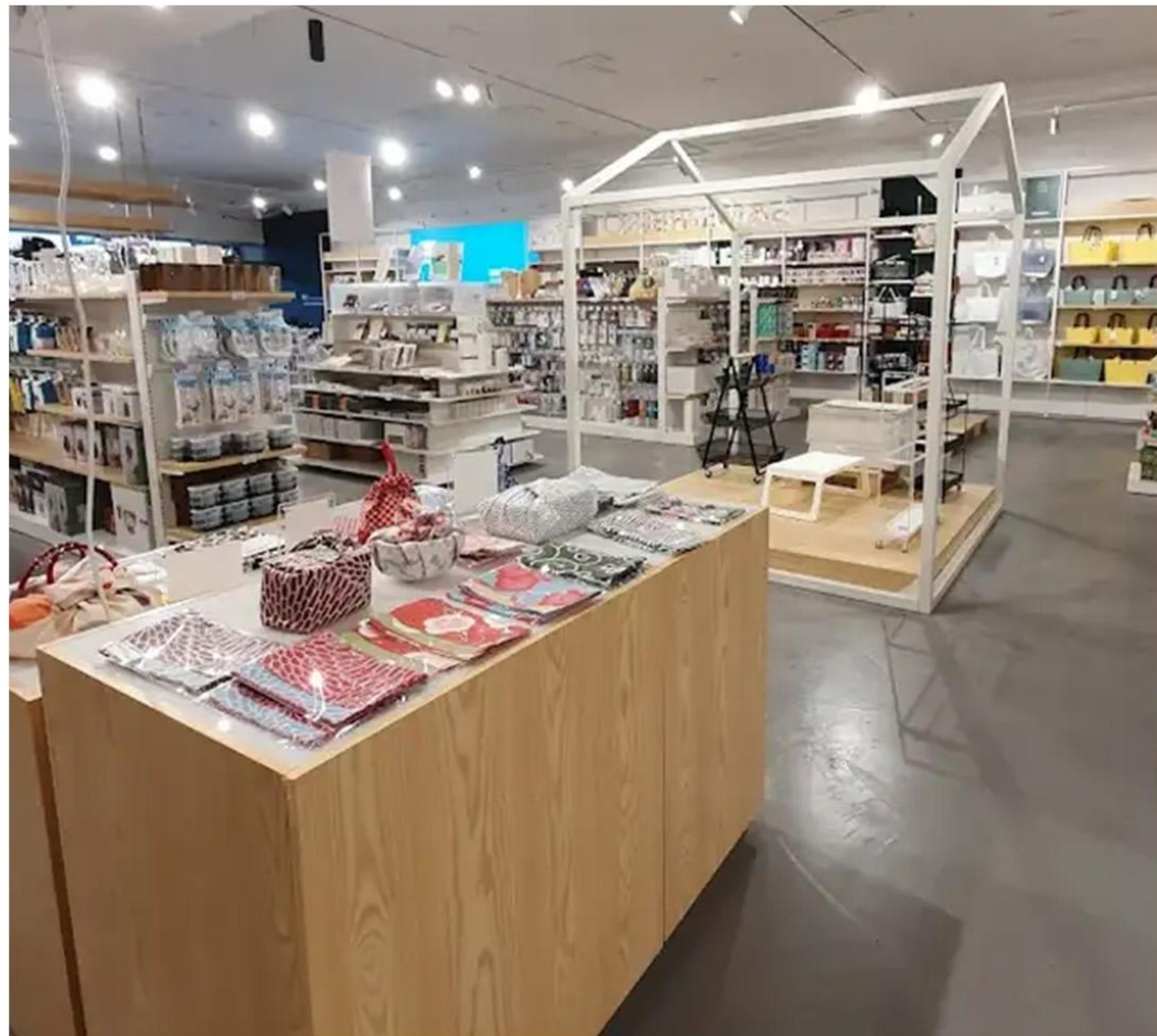


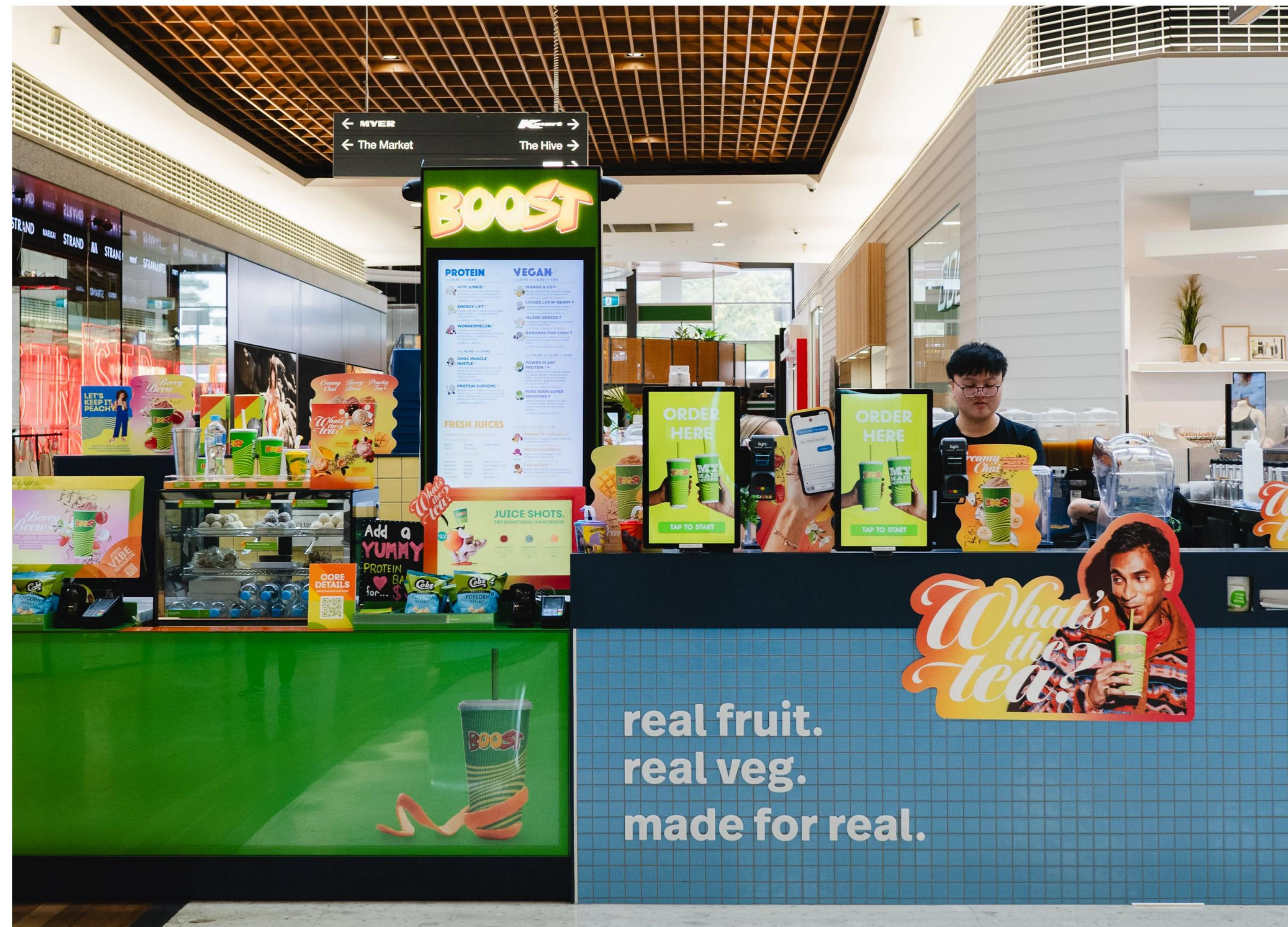
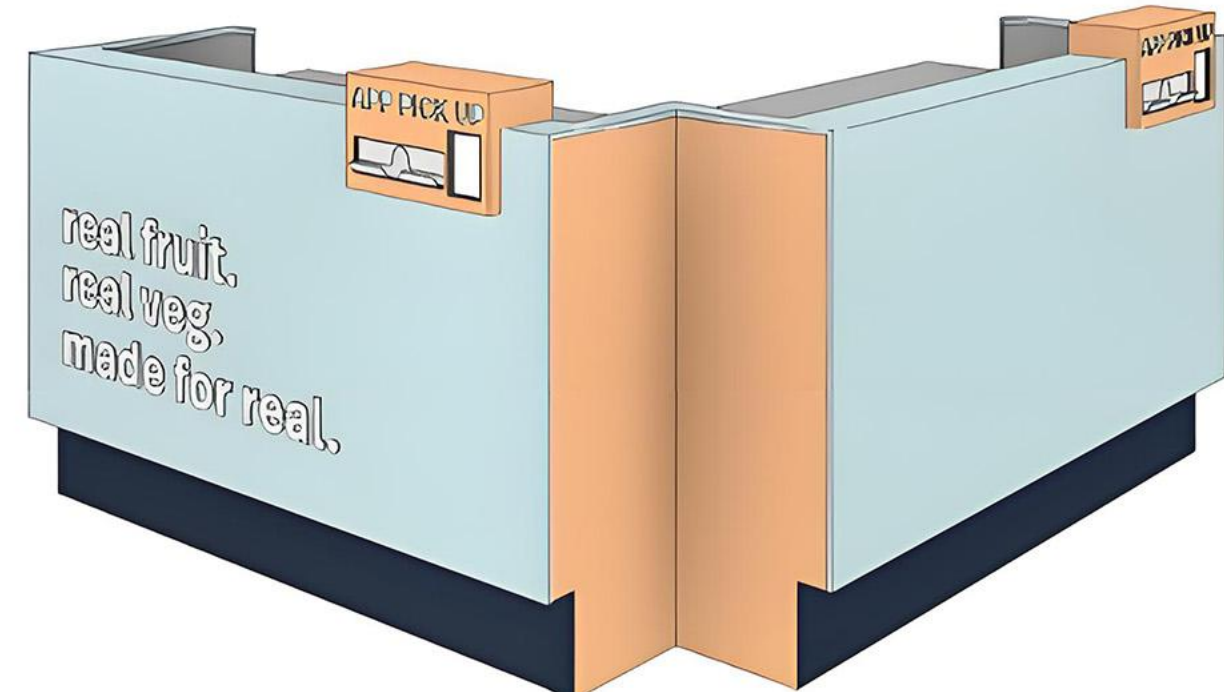
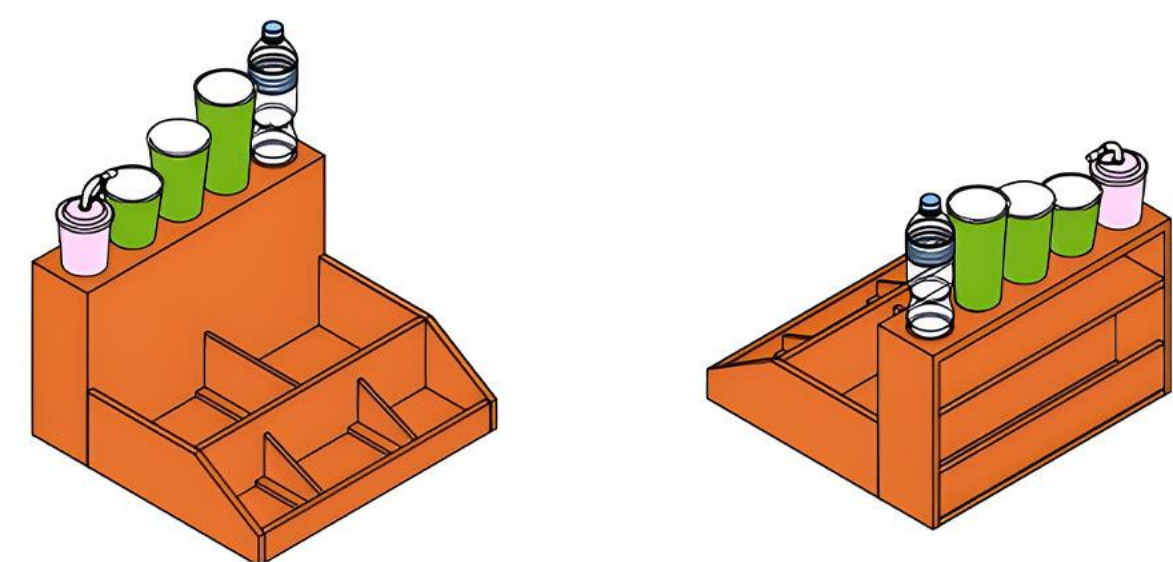
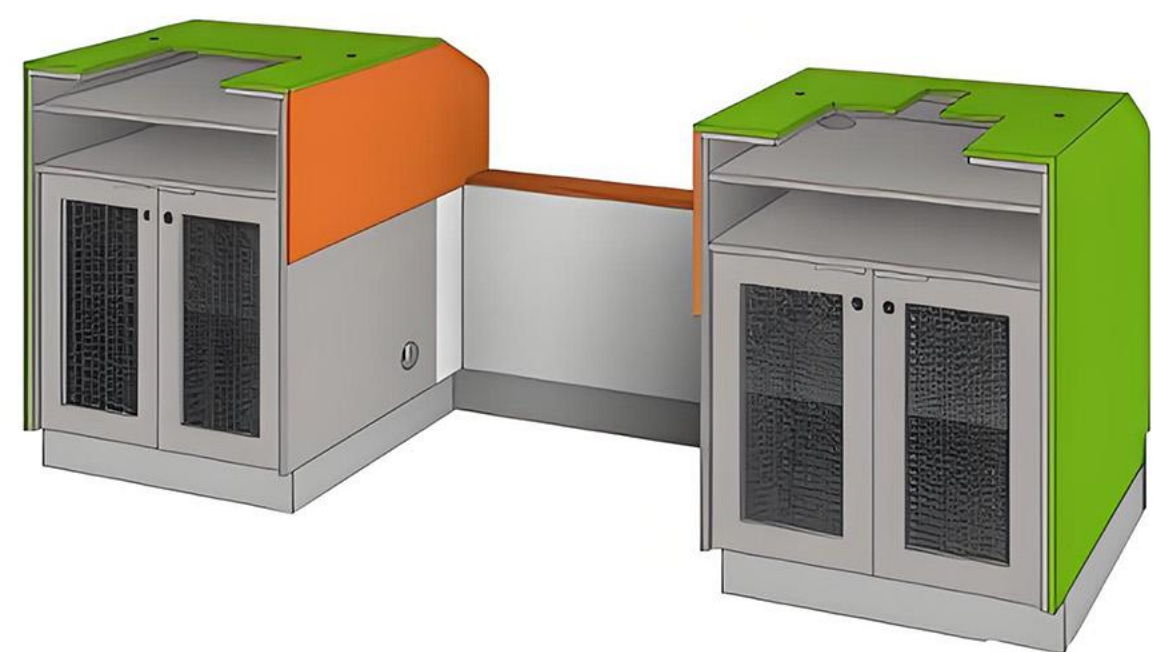
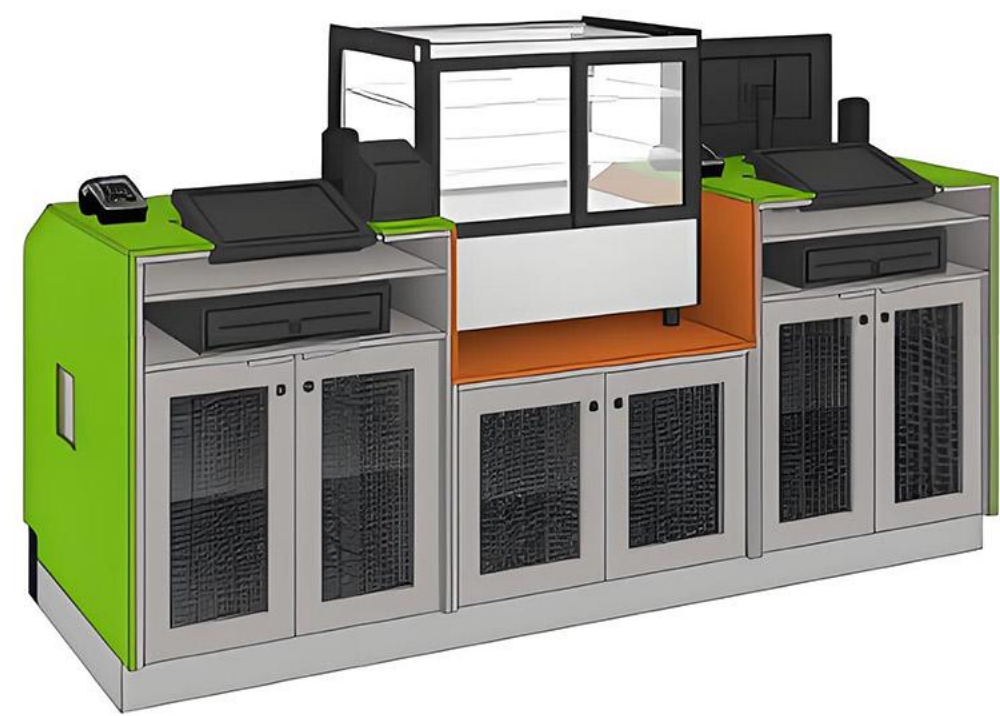
MINI MARU

CASE SHOW

successful cases
of Department Store

The store is full of a warm and life - filled atmosphere, with various display racks and facilities distributed reasonably. A wide range of general merchandise is neatly arranged in different areas, from tableware to daily necessities and everything in between. It not only allows each type of product to showcase its own characteristics well, but also creates a convenient and comfortable shopping scene for customers, stimulating their purchasing interest.





BOOST JUICE CASE SHOW

successful cases of Juice Shop

This Boost Juice store is full of vitality. The bright - colored display facilities are integrated with brand elements. Each area is reasonably laid out, presenting a rich range of products clearly, conveying the brand concept, creating an attractive consumption scene and stimulating customers' desire to buy fresh - squeezed juices.

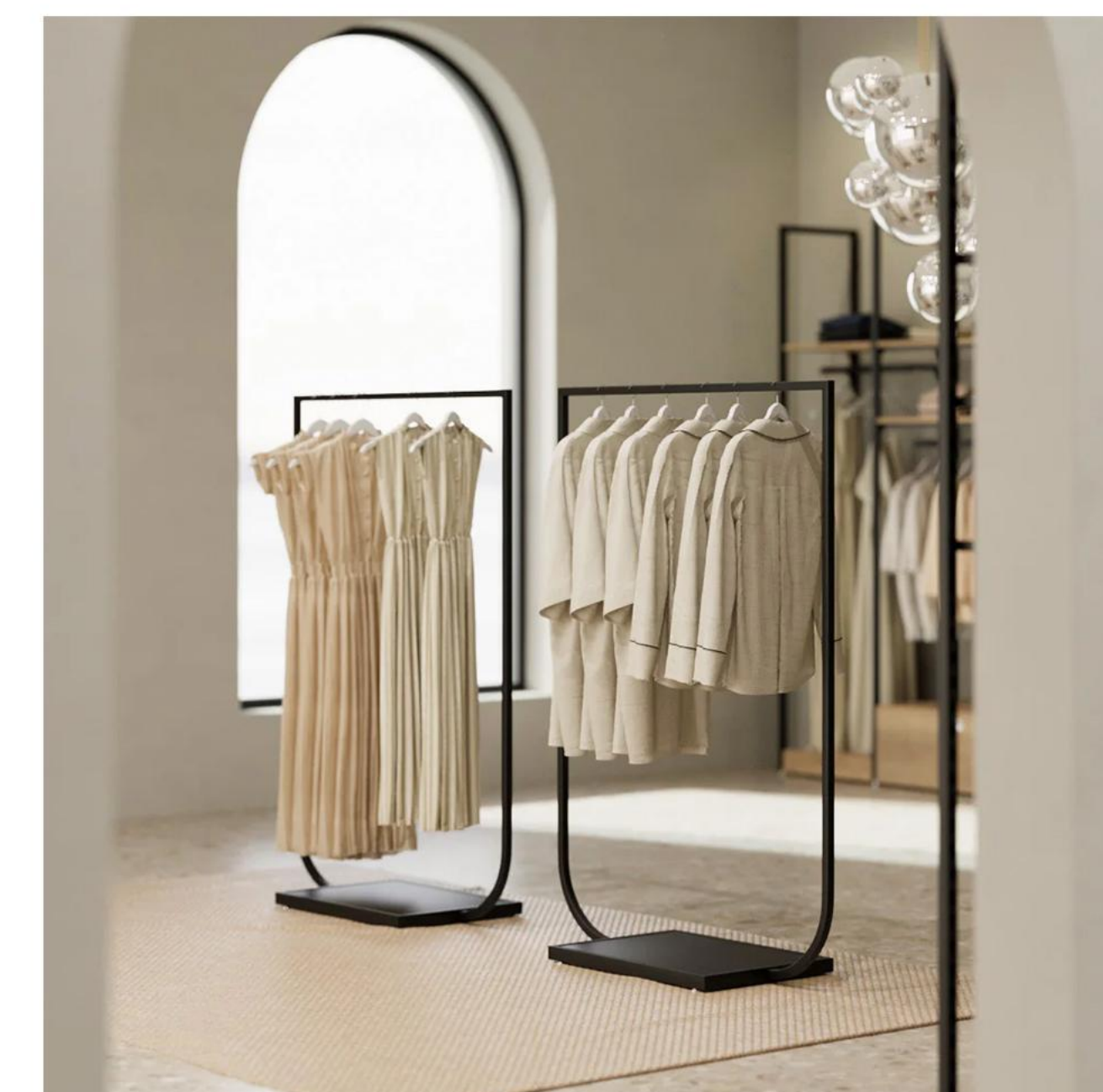
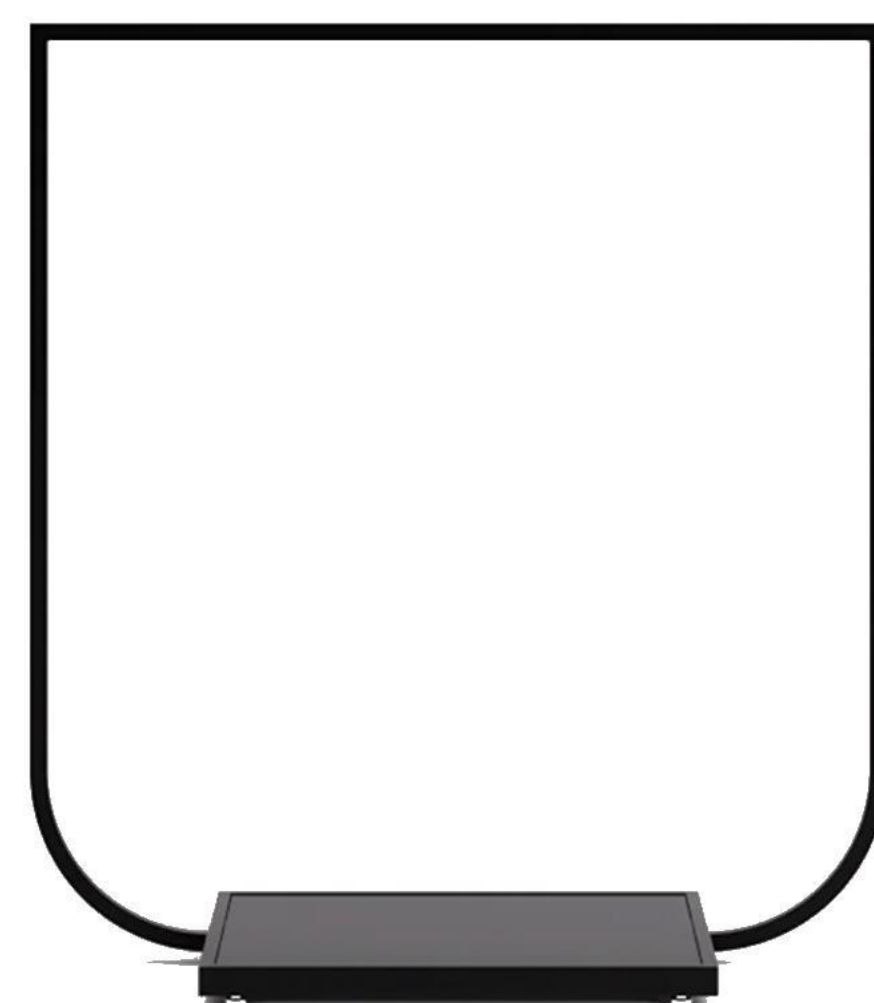


CLOTHING SHOP DISPLAY



CLOTHING DISPLAY RACK

This clothing display stand features a minimalist design with a sleek black U-shaped metal frame paired with a black square base, creating a clean and fluid structure. Ideal for high-end apparel displays, it cultivates a sophisticated and serene visual ambiance.





CLOTHING DISPLAY RACK

This display stand features a combination of a black metal frame and light wood-toned shelves, presenting an open double-tiered shelving structure. The metal frame boasts clean lines and a minimalist design, while the light wood shelves add a natural, soft texture to the overall piece. Against a pure white backdrop, it is ideal for showcasing apparel and home decor items.





CLOTHING DISPLAY RACK

This display rack features an all-black metal frame with a modular design: the upper section includes open shelves for accessories and packaged goods; the middle section has hanging rods for clothing; and the bottom section comprises a long storage platform for shoes or folded garments.





CLOTHING STORE CUBE TABLE

This display table features a deep gray matte cube as its centerpiece, with three staggered geometric structures showcasing apparel. Designed for placement in store center islands, it creates a striking focal point that draws customers to linger.





DISPLAY CABINET WOODEN SHELVES

This clothing store display cabinet features black metal frames paired with light brown wooden shelves, creating an open three-tier structure. It can be used to showcase apparel accessories, stack garments, or display individual items like shoes and bags. It lends clothing stores a rustic yet refined display ambiance, adding depth and sophistication to merchandise presentation.





RU-41



RU-15



RU-16



RU-T102



RU-T114



RU-T215



RU-T54



RU-71



RU-61



RU-S45



RU-S42



RU-S41

CLOTHING DISPLAY RACK

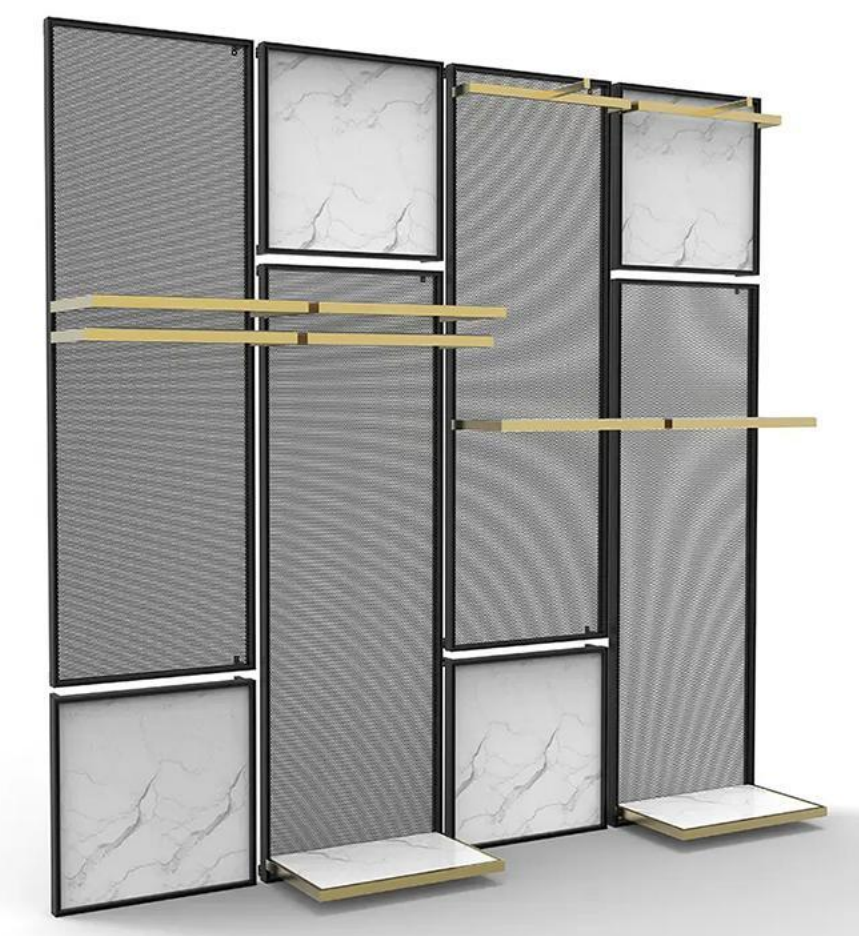
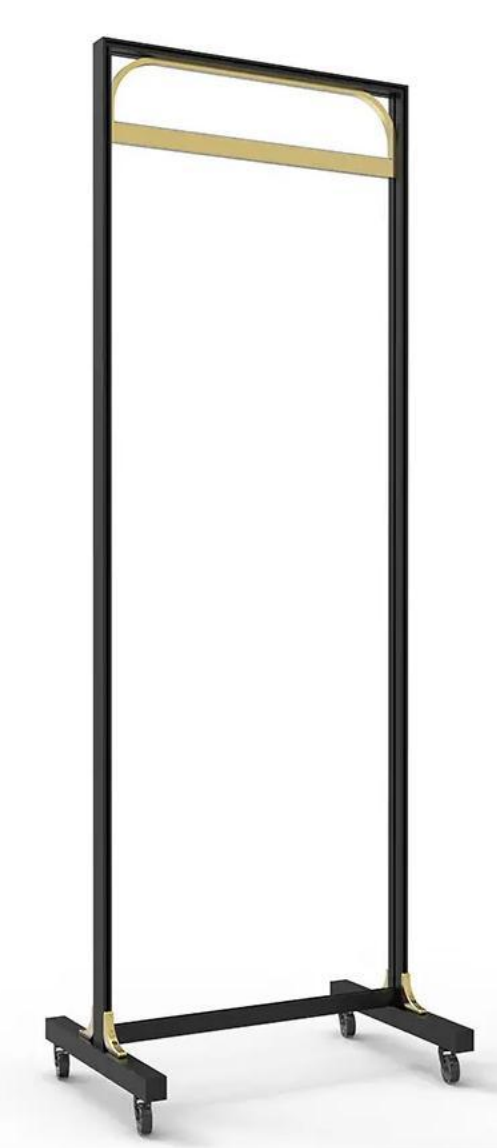
The entire display of this clothing store features gold metal hangers accented with muted tones, creating a soft, luxurious visual ambiance:

Display Area: Gold hangers, a central light blue cylindrical display stand, orange acrylic stools, and a gold-framed terrazzo display stand.



CLOTHING DISPLAY RACK

The black-framed golden hanging rod display racks and white marble display stands display products, and the black-framed golden hanging rod display racks maintain a unified style, integrating minimalism and natural aesthetics to create a high-end and tranquil display atmosphere for women's clothing.



Clothing Store Display



Clothing Display Rack with Hooks
Display Rack Series



Clothing Shelf Display Stand
Shelf Display Stand Series



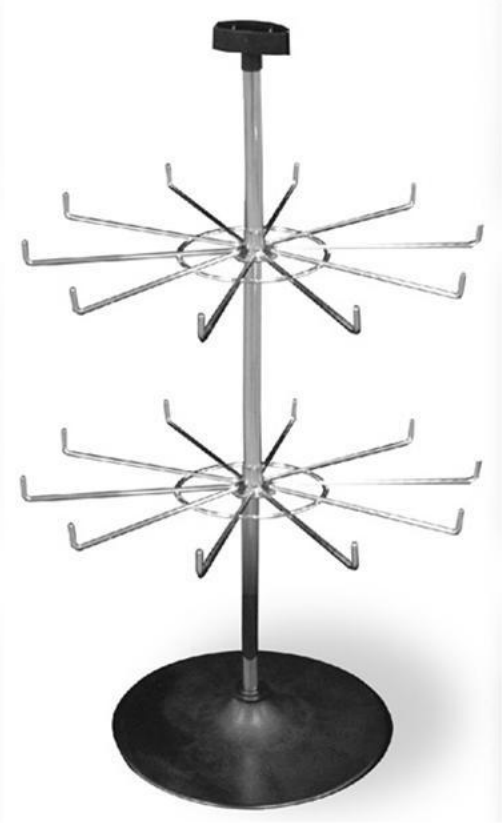
Wall-mounted display racks for clothing shops
Wall Display Rack Series



Metal coat racks with shelves for retail outlets
Display Racks Series



Display Rack with Shelf Fixing Devices
Display Rack Series



Rotating Counter Display Stand for Clothing
Display Rack Series



White round clothing display table
Display Table Series



Sportswear display racks
Display Rack Series



Metal Slatted Wall Display Rack with Hooks
Wall Display Rack Series



Freestanding Multifunctional Display Stand
Display Stand Series



Clothing display cabinets
Display cabinets Series



Clothing Store Hanging Racks
Display Rack Series

GUANGZHOU ONI SHOPFITTING LIMITED

ONI Factory : Xiusheng Road, Taihe Town, Baiyun District, Guangzhou, China



CLOTHING STORE FIXTURE

Start your Customized Plan

Contact Me :

Name : Ms. CICI TANG

Phone/Whatsapp : +86 18620963396 Email : sales1@onishopfitting.com

Website : www.onidisplay.com | www.onishopfitting.com

ONI
ONI Shopfitting