

PHARMACY SHOP DISPLAY CATALOG

Copyright©2025 GUANGZHOU ONI SHOPFITTING LIMITED

PROVIDING CUSTOM FURNITURE FOR
PHARMACIES FOR OVER 25 YEARS

We're here to help you make them even better.



ONI
ONI Shopfitting



ABOUT US

Founded in 2000, ONI Shopfitting Ltd. is a leading manufacturer of retail store fixtures, commercial interior fitouts, and display furnitures in Guangzhou, China. With a team of over 200 employees and a 30,000-square-meter production facility, ONI utilizes advanced manufacturing equipments to produce over 300,000 sets of store fixtures annually, including counters, display shelvings, store joineries, restaurant dining tables, furnishings, and display cases designed for premium product showcases.

After years of dedicated R&D and production, the company has assembled a team of specialized technical personnel and product development experts. Leveraging a dynamic team across R&D, manufacturing, marketing, and after-sales service, we employ internationally advanced production processes and technologies. Mastering multiple rigorous inspection techniques to ensure product precision and quality, we have progressively evolved into a renowned modern integrated manufacturer of display cabinets, display racks, and related products in China.



25 Years
Over 25 years
experience



30,000 m²
More than 3000+
projects per years



220 +
With a team of over
200 employees



3000 +
30,000-square-meter
production facility

DEVELOPMENT HISTORY

• 2025-Strategic Expansion: ONI MENA Team Formed

In 2024, ONI established the ONI MENA Team, This strategic move enables us to better understand and serve the needs of clients in the Middle East and North Africa, marking a significant step in ONI's international expansion strategy.

• 2020-2023-Steady Growth: Serving Global Clients

From 2020 to 2023, we consistently exported high-quality fixtures and shopfitting solutions to clients across Europe, the Americas, the Middle East, and Southeast Asia, reinforcing long-term partnerships and expanding our global footprint.

• 2018-Major Leap: Fully Upgraded Factory

To meet growing global demand for quality and speed, we relocated in 2018 to a newly built, state-of-the-art facility of over 35,000 square meters, over 250 employees, This marked a major milestone in ONI's modernization and scaling efforts.

• 2016-Brand Elevation: ONI Headquarters Established

In 2016, ONI Shopfitting officially established its headquarters in Guangzhou, China. This move allowed us to integrate design, production, sales, and operations under one roof. It marked our evolution into a professional and internationally-oriented commercial environment solution provider.

• 2013-Capacity Expansion: Factory Growth

We significantly upgraded our production capabilities in 2013. The factory was expanded to 15,000 square meters and our workforce grew to 150 employees. We also improved our facilities and management systems.

• 2010-Creative Drive: Design Department Founded

ONI formed an independent Creative Design Team in 2010. This department focused on visual planning and product innovation for commercial spaces. It was a key milestone in our transformation from a traditional manufacturer to a design-driven enterprise.

• 2008-Foundation: Factory Established

In 2008, we established our first production facility covering 5,000 square meters and staffed with 25 skilled workers.

CERTIFICATE



Quality Management System Certification



Environmental management System certification



Occupational Health Management System Certification



Social responsibility review



Vision: To become the preferred supplier of retail display solutions for our customers.

INTRODUCTION

Company Culture

Our Mission

We exist to empower global retail brands with innovative, high-quality store fixtures that elevate their visual merchandising while optimizing costs and operational efficiency. As dedicated Store Fixture Specialist, we deliver tailored solutions that blend craftsmanship, technology, and sustainability to transform retail spaces into immersive retail brand experiences.

Corporate Vision

To become a global leader among the top 10 store fixture suppliers worldwide, recognized as the go-to partner for retailers seeking cutting-edge design, reliability, and value-driven innovation. We aspire to set industry benchmarks by redefining how retail environments are built, ensuring our clients thrive in an ever-evolving market.

Core Values

Serving customers people-oriented honest and pragmatic lean innovation



Business Philosophy

Treat People with Integrity Quality is Supreme Profit from Trust

Customer

Customer satisfaction and success is the only measure of our work performance.

Staff

Implement an organizational system that develops from within, Select, promote and reward high-performing employees, Employees are the company's precious wealth, The improvement of staff quality and professional knowledge level is the growth of the company's wealth.

Products

Continuously innovative products are the trajectory of the company's development and product quality and service quality are the lifeblood of the company's development.

Product Brand

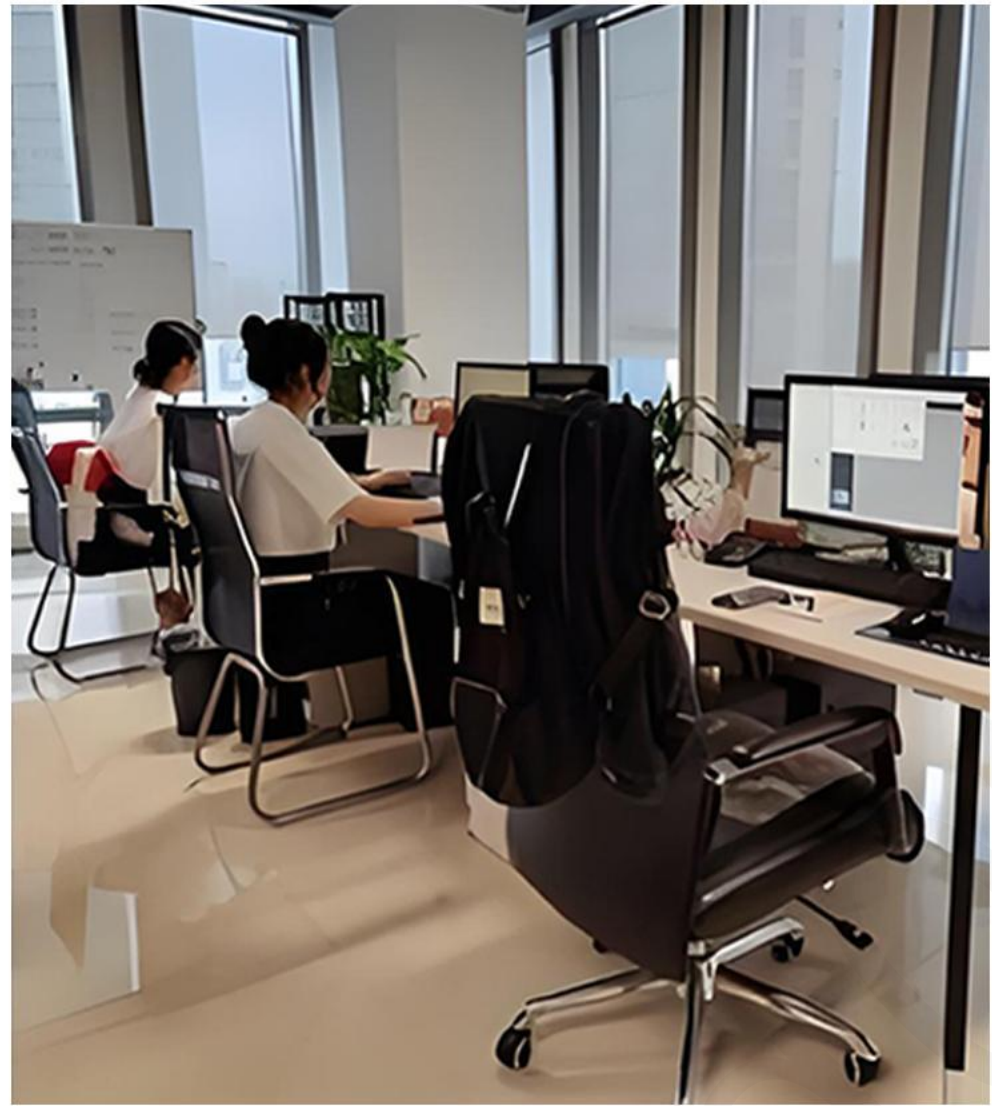
Establish a century-old great cause and build a century-old brand.

Market

Sincere cooperation win-win situation develop the most suitable market and strive for the largest share.



TEAM INTRODUCTION

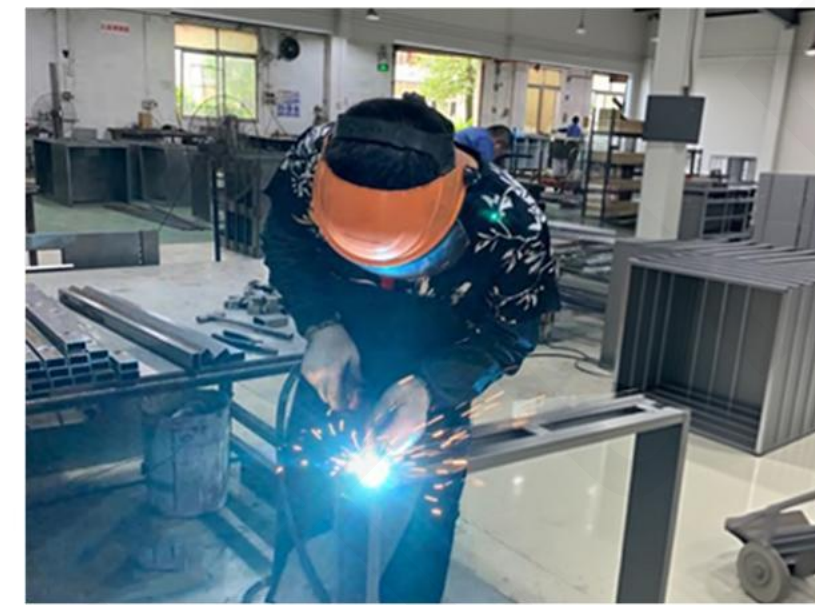


OUR TEAM

OUR TEAM HARD WORKING
HIGHLY MOTIVATED AND EFFICIENT
AND REMAIN COMMITTED TO PROVIDE
THE BEST SERVICE.



PRODUCTION WORKSHOP/EQUIPMENT



Metal Processing



5 Spray Painting House



Sanding Production Line



Assemble Workshop




Metal Processing Machines



Joinery Workshop


SERVICE EXCELLENCE

With over 25 years of experience, we have developed unique insights into shop fittings & retailing trends. We like to engage with our clients. We will give initial advice and ideas on how to tackle a project more efficiently, eliminate unnecessary costs and meet tight deadlines.




Retail Shop Layout & Space Planning

- 1.Full spatial planning
- 2.Traffic flow optimization
- 3.Strategic display placement
- 4.Assembly instructions
- 5.3D visualization of layout



Technical Drawing Services

- 1.Electrical layout for display units
- 2.Detailed dimensional plans for contractors
- 3.Reflected ceiling and lighting integration
- 4.Retail design management drawings



Custom Shopfitting Design

1. Display solutions: shelving units, cabinets, counters,, display cases, window displays, visual merchandising elements, etc.
- 2.Utilize our extensive resources to customize your needs.

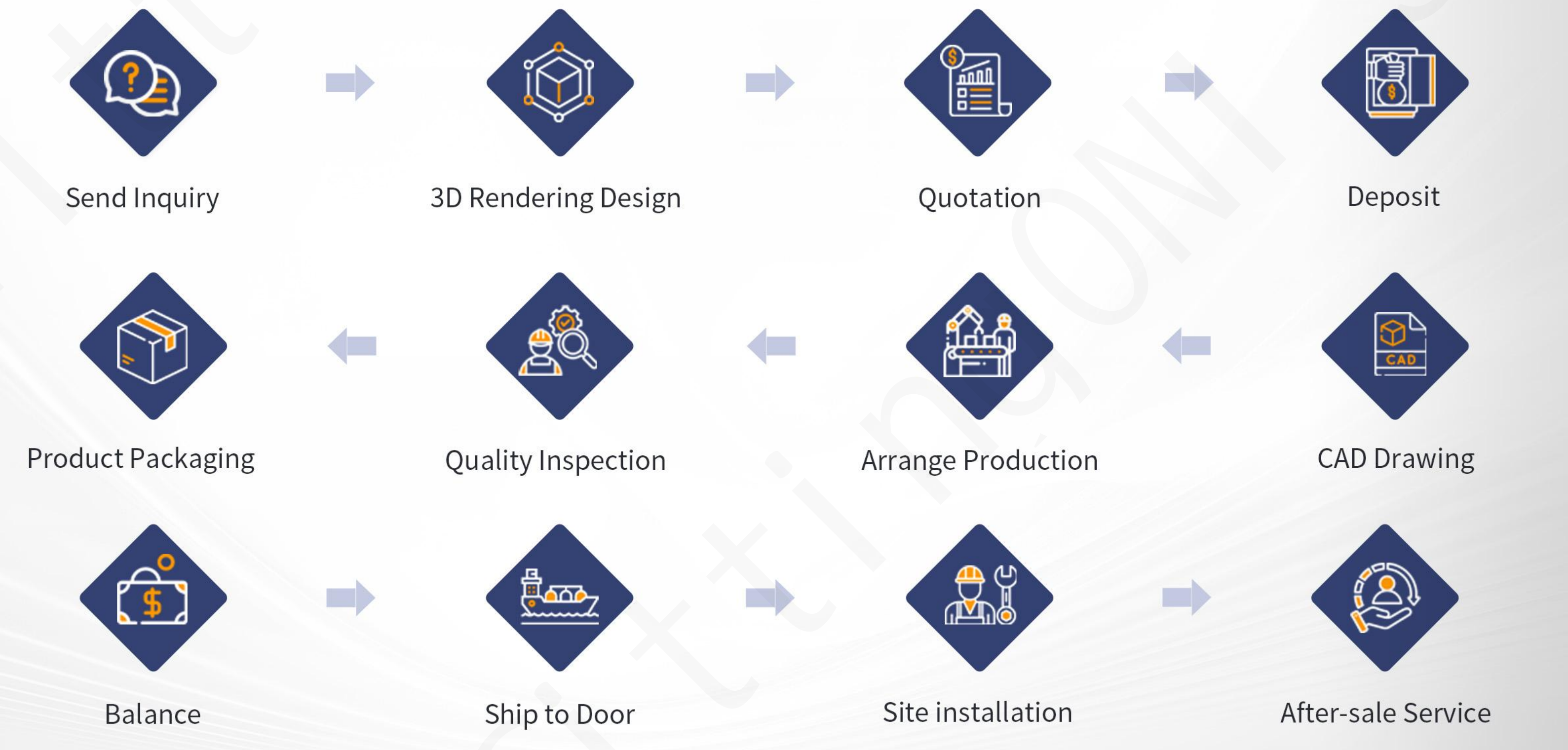


3D Rendering for Shop Interior Design

ONI Shopfitting Design specializes in transforming your project vision into reality through advanced color 3D rendering technology. This enables you to precisely preview the visual impact and spatial ambiance of your products before production begins.

PROJECT PROCESS

Throughout our collaboration, we will maintain close communication with our clients. Any questions or concerns will be promptly addressed to ensure the delivery of products that meet and exceed client expectations.



BUSINESS DISTRIBUTION

The selection by numerous renowned brands stands as a testament to the high recognition of ONI. We will continue to uphold the spirit of professionalism, innovation, and excellence, collaborating with more brands to present more spectacular store displays to the world, ensuring global consumers enjoy successful shopping experiences.

200+

Primary Export Regions

- North America:** United States, Canada, Mexico, etc.
- Europe:** United Kingdom, Germany, France, Italy, Switzerland, Sweden, etc.
- Southeast Asia:** Thailand, India, etc.
- Middle East:** United Arab Emirates, Qatar, Saudi Arabia, Dubai, etc.
- Oceania:** Australia , Melbourne, Sydney), New Zealand, etc.
- Africa:** South Africa, etc.

As an international group, we operate two stores in Guangzhou and Hong Kong and have established a strategic alliance with Dubai, dedicated to serving customers worldwide. We consistently tailor our service solutions to the specific needs of different markets and countries, ensuring a successful shopping experience for global customers.



CUSTOMIZED SERVICES

One Stop Service

Employing top talent to create the highest quality, deliver the finest service, and reap the most substantial rewards.

Free Quotation

- 3D generated images - including at least 5 images from different angles.
- 360°Video for one space (add \$199 for second space, if necessary)
- Setting out drawings - Plan & Layout & Elevation
- Joinery Production Drawings



We will give initial advice and ideas about how to tackle a project more efficiently.



We analyze your demand and optimize your space layout to increase customer experience.



With a thorough understanding of the latest design trends, we create incredible designs to suit your space and brand.



Manufacturing at our fully equipped factory in China, we produce top quality fixtures.



We take care of all the logistics to provide you with worry-free, hassle-free delivery.



Our local team of professional installer guarantee customer satisfaction and offer maintenance services if needed.

Our Advantages

Independent R&D

There are more than 30 design and technology research and development talents, and more than 200 independent research and development products every year.

Production Capacity

Our manufacturing facility spans over 30,000 square meters, specializing in counters, display racks, retail joinery, and custom display cases designed for premium product showcases.

Lean Manufacturing

Exceptional quality management capabilities, implementing lean production practices, and certified under ISO quality systems.

Technical Expertise

Our core team brings over 25 years of production experience, driving advancements in intelligent automation technology.





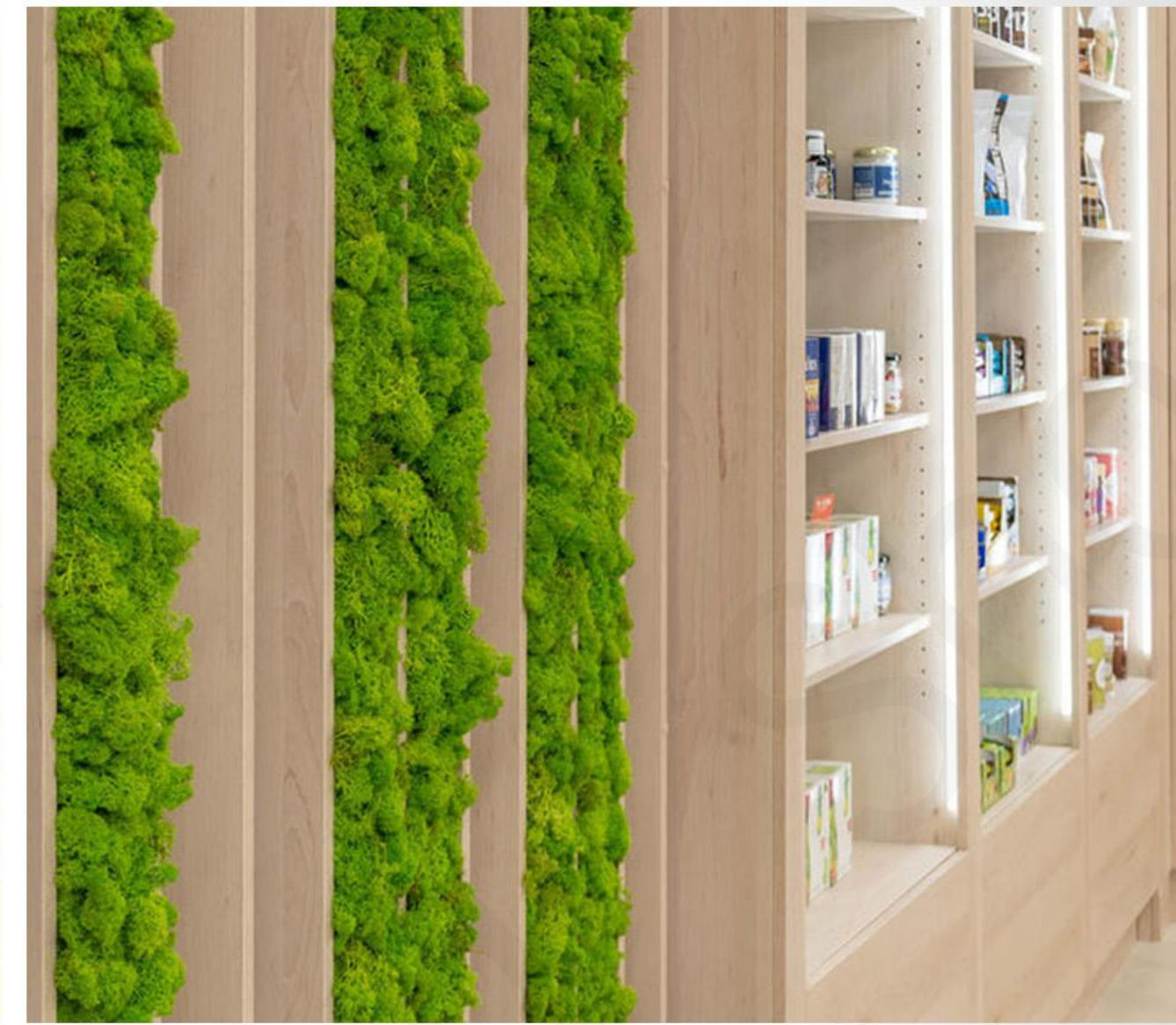
PROJECTS-RETAIL
STORE FIXTURE
OUR CASE

A LUSH GREEN HEALTH STORE

CASE SHOW

Successful Case Studies of Pharmacies

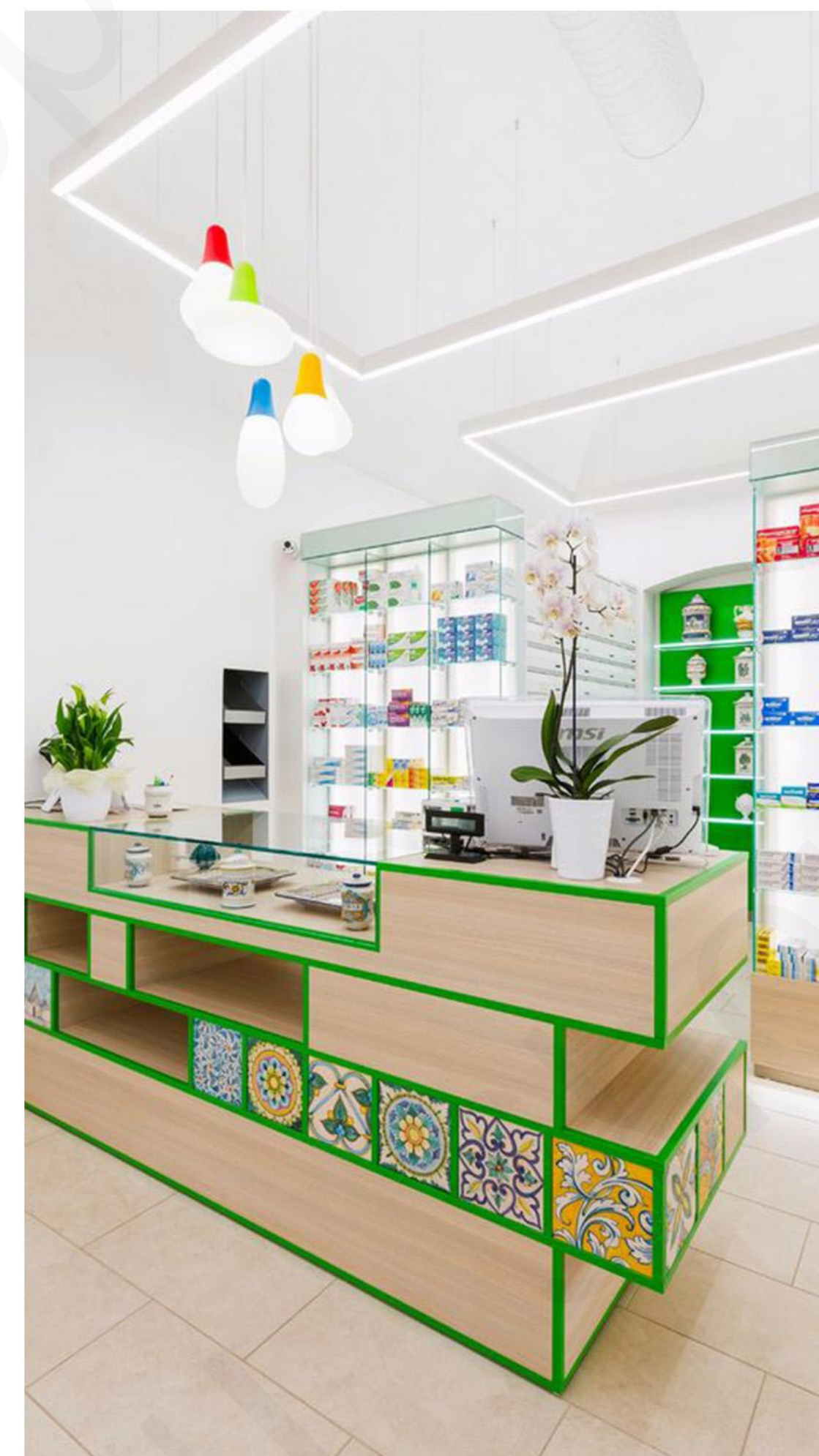
The health food display rack features a light wood finish accented with green plants. Its multi-tiered structure categorizes health foods into clearly defined sections, creating a fresh and natural aesthetic while making product selection intuitive at a glance.



SOUTHERN PHARMACY

CASE SHOW

Successful Case Studies
of Pharmacies



APOTHEKE AM HANDELSKAI

CASE SHOW

Successful Case Studies
of Pharmacies

Pharmacy modular shelving system featuring a white multi-drawer storage cabinet and glass-shelf display units. The drawer cabinet enables categorized medication storage with optimized layered structures, streamlining product selection pathways to enhance visual appeal and purchasing efficiency.



WOOD-INSPIRED HEALING

CASE SHOW

Successful Case Studies
of Pharmacies

This pharmacy employs solid wood as its core material to create a space and display system that harmoniously blends human warmth with medical professionalism. Shelving features a “solid wood frame + tiered adjustable structure” design, accommodating prescription medications, health supplements, and cosmeceuticals. Central promotional islands, vertical wall displays,



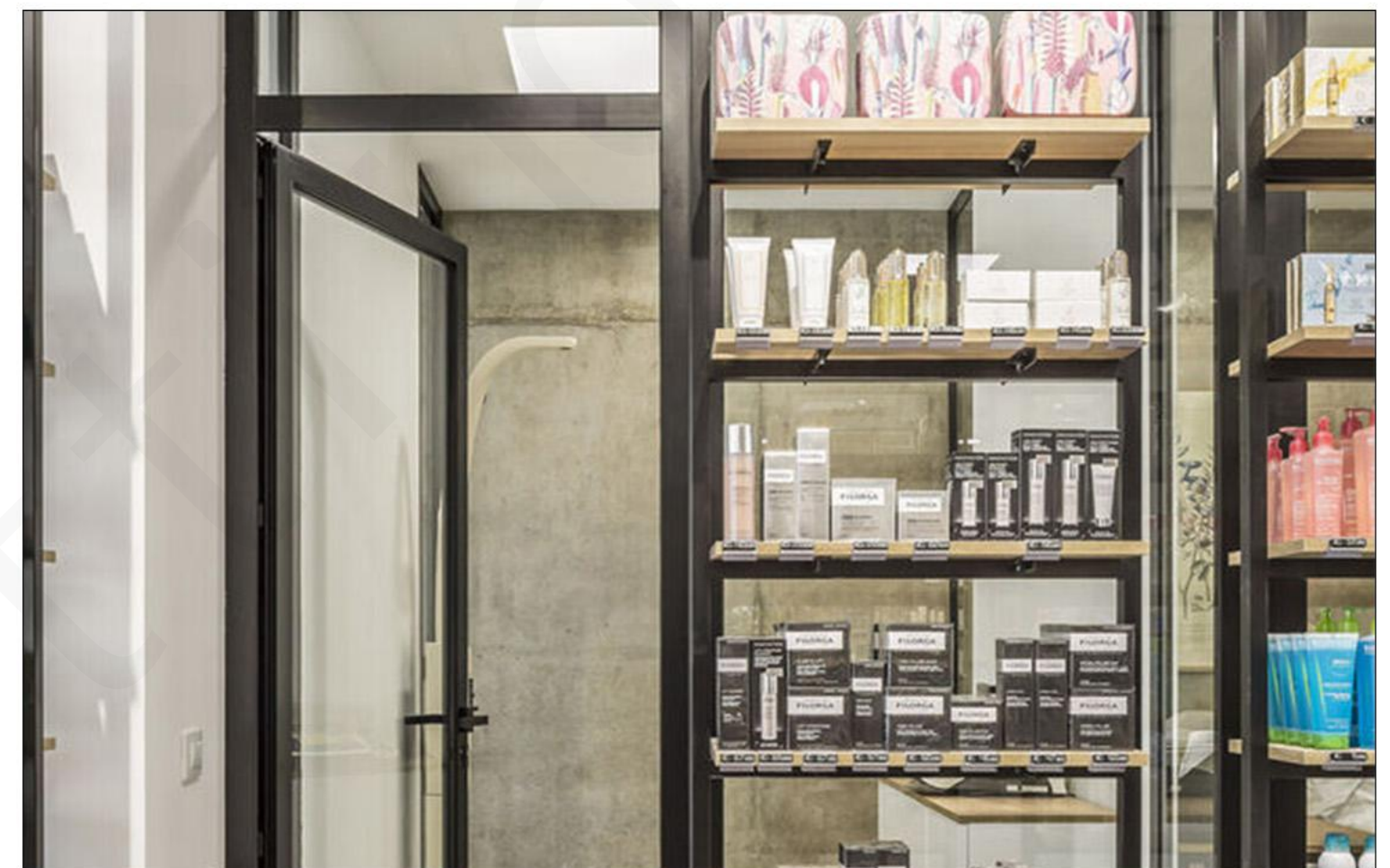
GALENO PHARMACY

CASE SHOW

Successful Case Studies
of Pharmacies

Hook-mounted shelves flexibly display small-packaged pharmaceuticals and personal care products, while open shelving accommodates larger-packaged items. Multi-tiered open shelves enable dense yet organized merchandise display, enhancing category differentiation while fostering a relaxed shopping atmosphere. This approach increases visibility for non-pharmaceutical goods and improves shopping efficiency.





PATTERN SEQUENCE HEALING

CASE SHOW

Successful Case Studies
of Pharmacies

This pharmacy features a modular display system. Clean-lined black metal frames paired with the warm texture of natural wood shelves create precise zoning for pharmaceuticals, cosmetics, and personal care products. Modular shelving allows flexible layout adjustments to accommodate evolving product categories. The spatial flow remains fluid and open.



CAGLIARI PHARMACY

CASE SHOW

Successful Case Studies of Pharmacies

The pharmacy features a creative rotary display rack design that rotates 360 degrees to showcase health foods, cosmeceuticals, and other products. Flexible hanging slots on the left side accommodate oral care items, creating a clean and efficient shopping environment.



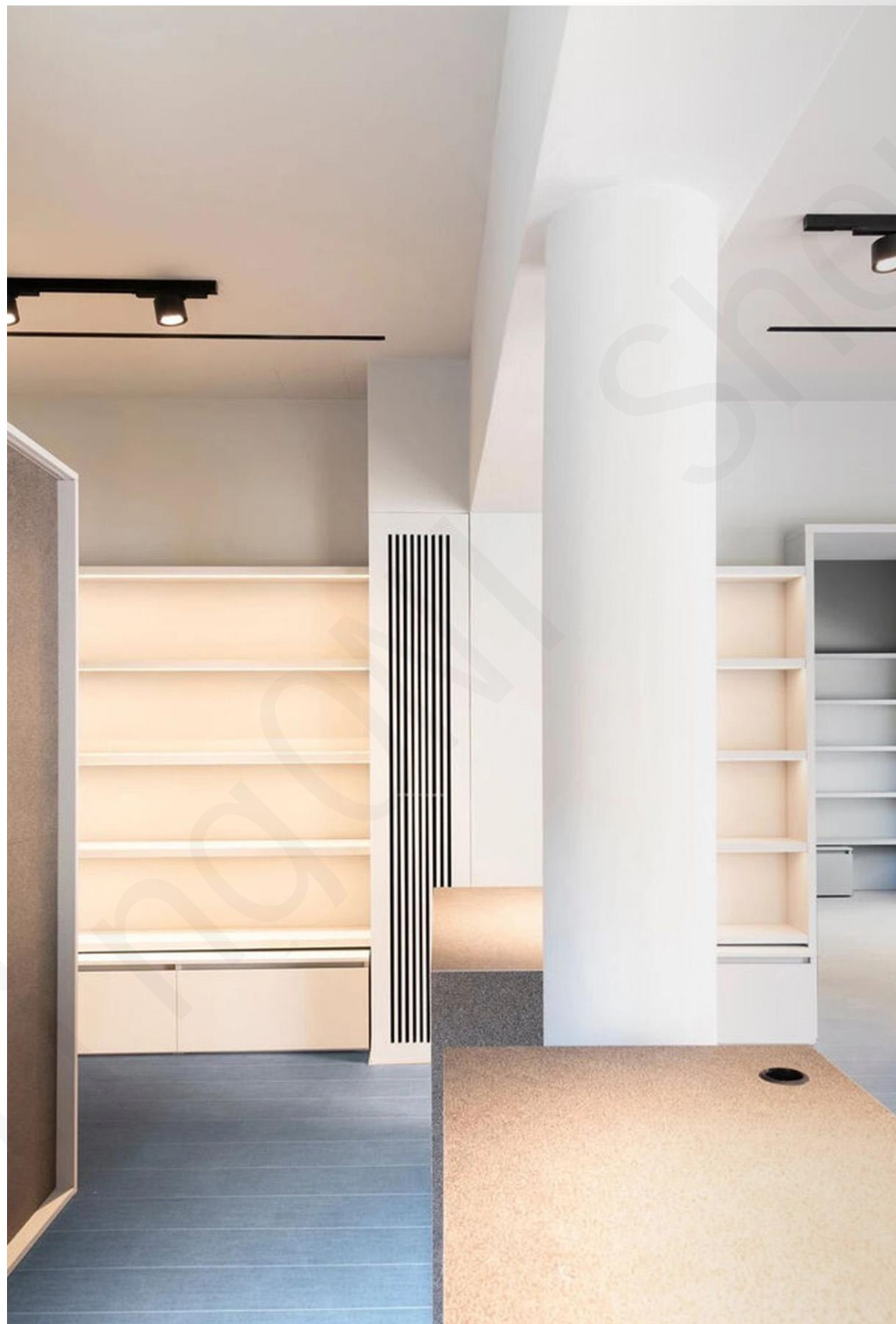
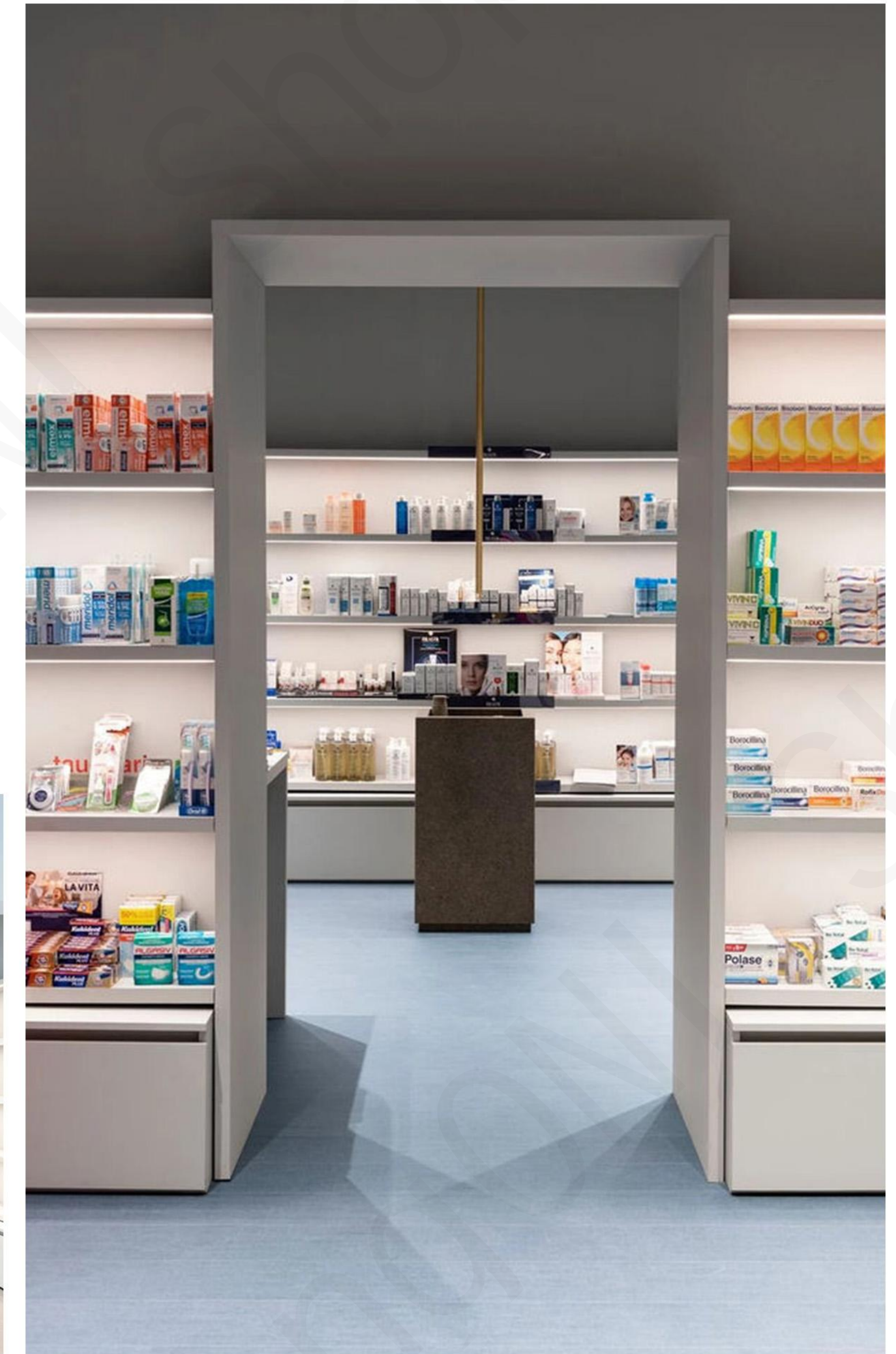


PALERMO PHARMACY

CASE SHOW

Successful Case Studies of Pharmacies

The layered layout clearly presents categories like cosmeceuticals and health care products; it dissolves the traditional pharmacy's solemn atmosphere, transforming the process of selecting medications into an exploration of health aesthetics within an art gallery. This achieves dual value through "functional display" and "immersive experience."



CASE SHOW

Successful Case Studies
of Pharmacies



CASE SHOW

Successful Case Studies
of Pharmacies

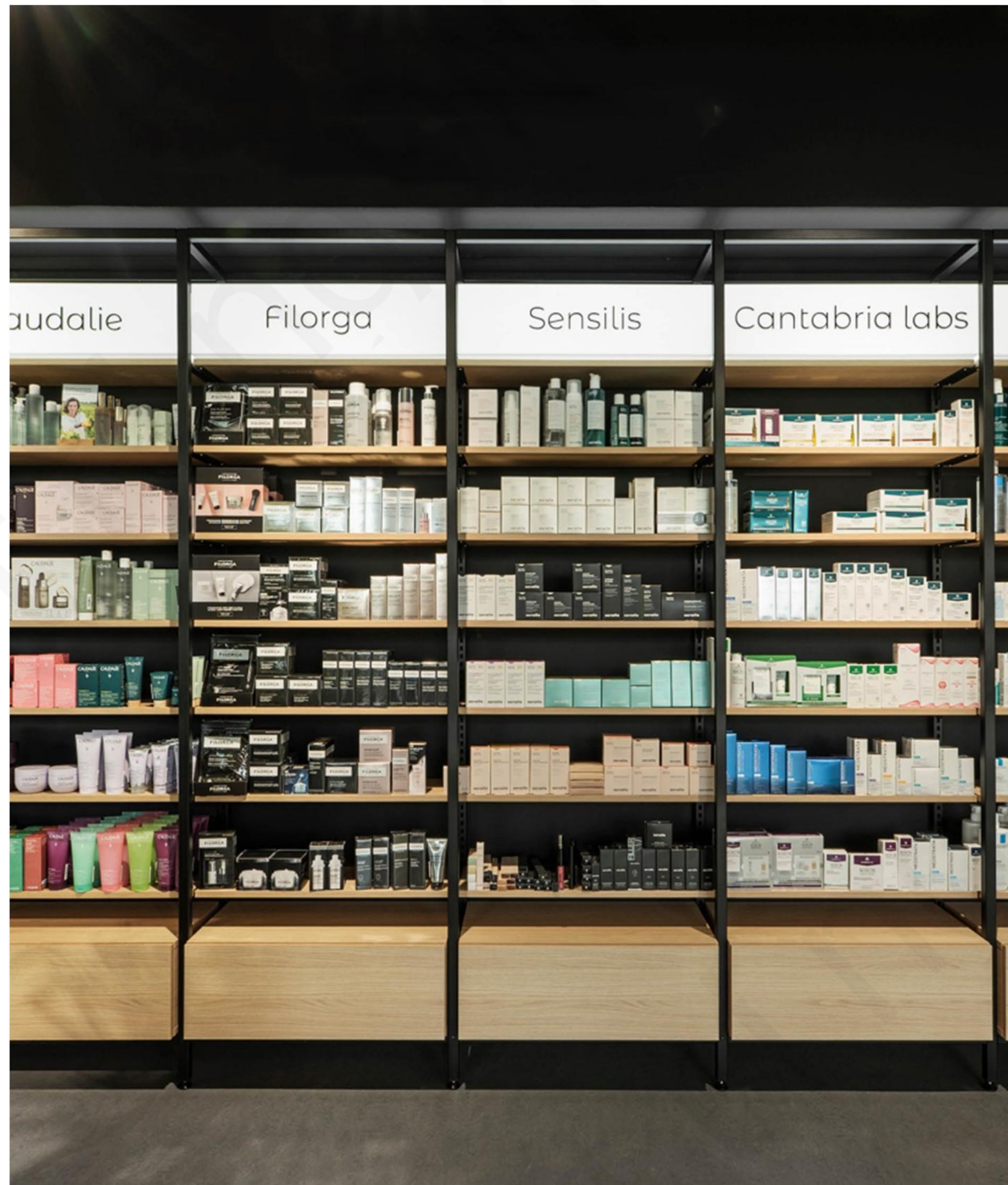


RICIÓN
NATURAL

PHARMACY SHOP DISPLAY

PHARMACY SHELVES

Wall-mounted pharmacy shelving, designed specifically to meet commercial space requirements, elegantly adapts to any point of sale. Create a distinctive space that showcases your brand identity while precisely fulfilling your layout and storage needs.



PHARMACY SHELVES

Double-sided shelving plays a vital role in the customer shopping journey, maximizing shelf space utilization to enhance product visibility and elevate the overall shopping experience.



Il nostro tempo per prenderci cura di voi.

MEDICAZIONE

ELETTROMEDICALI

ORTOPEDIA

PHARMACY SHELVES

Pharmacy mobile shelving units feature adjustable positioning with metal frames and wooden shelves, complete with category labels, presenting a minimalist and unified aesthetic.





PHARMACY SHELVES

This multi-tiered shelving employs a “high-low, dense-sparse” display technique: top shelves feature prominently promoted new products, while lower shelves hold stock items. Smaller bottles are positioned at the front to create an “easy-to-reach” feel, with larger bottles placed at the back as backups.



SHELF END CAP

Shelf end caps play a vital role in directing customer attention to featured merchandise. By allowing for seasonal and promotional updates, they inject vitality into sales areas, serving as a key element in retail displays.





PHC-25
Pharmacy counter



PHC-41f
Pharmacy counter



PHC-32c
Pharmacy counter

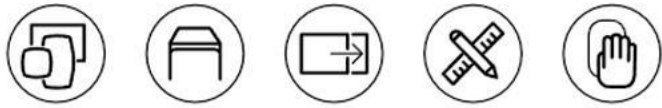


PHC-38v
Pharmacy counter

PHARMACY COUNTER

Counter partition design with multiple service stations simultaneously accommodates cashiering, prescription verification, and health consultation needs. Spacious countertops securely hold cash registers, prescription forms, and customer items. This setup enhances pharmacist efficiency while improving customer shopping experience through optimized product display.

Pharmacy Shop Display



Pharmacy Display Racks
Pharmacy Shop Display



Double-Sided Pharmacy Display Racks
Pharmacy Shop Display



Pharmacy Shelving
Pharmacy Shop Display



Pharmacy Shelving Cabinets
Pharmacy Shop Display



Pharmacy Metal Display Racks
Pharmacy Shop Display



Pharmacy Metal Drawer Display Racks
Pharmacy Shop Display



Glass Counter Medicine Display Racks
Pharmacy Shop Display



Pharmacy Cashier Counters
Pharmacy Shop Display



Column Pharmacy Shelving
Pharmacy Shop Display



Double-Sided Pharmacy Shelving
Pharmacy Shop Display



Pharmacy Shelving Cylinder Cabinets
Pharmacy Shop Display



Pharmacy Display Counters
Pharmacy Shop Display

Pharmacy Shop Display



Wall-Mounted Display Rack with Storage and Lighting
Pharmacy Shop Display



POS Pharmacy Shelving Display
Pharmacy Shop Display



Custom Shelving for Pharmacy Display Racks
Pharmacy Shop Display



Pharmacy Cashier Counter
Pharmacy Shop Display



POS Pharmacy Retail Display Cabinet
Pharmacy Shop Display



Multi-Function Pharmacy Display Rack
Pharmacy Shop Display



Double-Sided Pharmacy Display Rack
Pharmacy Shop Display



Multi-Tier Pharmacy Display Rack
Pharmacy Shop Display



Glass-Door Pharmacy Display Rack
Pharmacy Shop Display



Pharmacy Storage Cabinet
Pharmacy Shop Display



4-Tier Lockable Glass Display Cabinet
Pharmacy Shop Display



Retail Metal Pharmacy Shelving Pharmacy Display Shelves
Pharmacy Shop Display

GUANGZHOU ONI SHOPFITTING LIMITED
ONI Factory : Xiusheng Road, Taihe Town, Baiyun District, Guangzhou, China



PHARMACY SHOP FIXTURE

**Start your
Customized Plan**

Contact Me :

Name : Ms. CICI TANG

Phone/Whatsapp : +86 18620963396 Email : sales1@onishopfitting.com

Website : www.onidisplay.com | www.onishopfitting.com

ONI
ONI Shopfitting



WhatsApp



Website1



Website2

CONTACT US

ONI Factory : Xiusheng Road, Taihe Town, Baiyun District, Guangzhou, China

Phone/Whatsapp : +86 18620963396

✉ Email : sales1@onishopfitting.com



GUANGZHOU ONI SHOPFITTING LIMITED
广州禧洲实业贸易有限公司

www.onidisplay.com www.onishopfitting.com

Display Cabinets for Optical Shop Display