

COFFEE SHOP DISPLAY CATALOG

One-stop coffee shop fixture solutions for
cafés, bakeries and beverage stores



WhatsApp



Website1



Website2

CONTACT US

- 📍 ONI Factory : Xiusheng Road, Taihe Town, Baiyun District, Guangzhou, China
- ☎ Phone/Whatsapp : +86 18620963396
- ✉ Email : sales1@onishopfitting.com



YOUR VISION · WE CRAFT

ONI Shopfitting is dedicated to enhancing the coffee shop experience through customized design, layout, and logistics services, ensuring each location achieves optimal efficiency and customer satisfaction. Its expertise in these areas empowers coffee shop owners to create spaces that are both attractive and functional, thereby maximizing operational success and customer engagement.



COMPANY PROFILE

Founded in 2000, ONI Shopfitting Ltd. is a leading manufacturer of retail store fixtures, commercial interior fitouts, and display furnitures in Guangzhou, China. With a team of over 200 employees and a 30,000-square-meter production facility, ONI utilizes advanced manufacturing equipments to produce over 300,000 sets of store fixtures annually, including counters, display shelvings, store joineries, restaurant dining tables, furnishings, and display cases designed for premium product showcases.

25⁺ Years

Over 25 years experience, More than 3000+ projects per years



220 +
With a team of over
200 employees



3000 +
30,000-square-meter
production facility

INNOVATION
PRAGMATISM

COLLABORATION
WIN-WIN

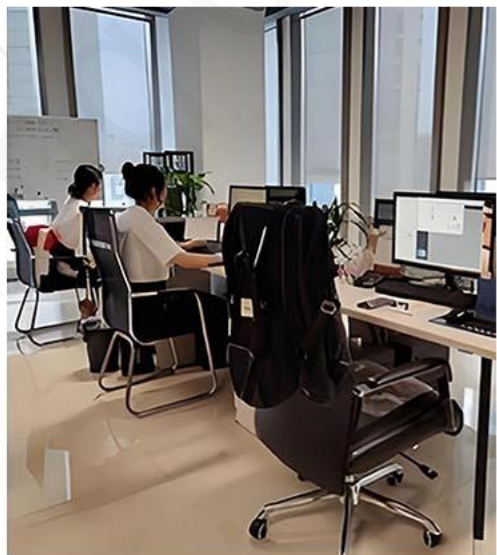
After years of dedicated R&D and production, the company has assembled a team of specialized technical personnel and product development experts.

Leveraging a dynamic team across R&D, manufacturing, marketing, and after-sales service, we employ internationally advanced production processes and technologies. Mastering multiple rigorous inspection techniques to ensure product precision and quality, we have progressively evolved into a renowned modern integrated manufacturer of display cabinets, display racks, and related products in China.

TEAM INTRODUCTION

OUR TEAM

OUR TEAM HARD WORKING
HIGHLY MOTIVATED AND EFFICIENT
AND REMAIN COMMITTED TO PROVIDE
THE BEST SERVICE.



PRODUCTION WORKSHOP/EQUIPMENT

CONTINUOUS INNOVATION IN PRODUCTS CHARTS THE
COURSE OF A 'COMPANY'S DEVELOPMENT, WHILE PRODUCT
QUALITY AND SERVICE EXCELLENCE SERVE AS THE LIFELINE
OF ITS GROWTH.



Metal Processing



5 Spray Painting House



Sanding Production Line



Assemble Workshop



Metal Processing Machines



Joinery Workshop

DESIGN-PRODUCTION

ONI Shopfitting offers clients a one-stop comprehensive service with over 25 years of experience in all phases of projects from creation to completion.

PROJECT PROCESS

Throughout our collaboration, we will maintain close communication with our clients. Any questions or concerns will be promptly addressed to ensure the delivery of products that meet and exceed client expectations.



BUSINESS DISTRIBUTION

Primary Export Regions

North America: United States, Canada, Mexico, etc.

Europe: United Kingdom, Germany, France, Italy, Switzerland, Sweden, etc.

Southeast Asia: Thailand, India, etc.

Middle East: United Arab Emirates, Qatar, Saudi Arabia, Dubai, Iraq, etc.

Oceania: Australia, Melbourne, Sydney, New Zealand, etc.

Africa: South Africa, etc.



The selection by numerous renowned brands stands as a testament to the high recognition of ONI. We will continue to uphold the spirit of professionalism, innovation, and excellence, collaborating with more brands to present more spectacular store displays to the world, ensuring global consumers enjoy successful shopping experiences.

200⁺



As an international group, we operate two stores in Guangzhou and Hong Kong and have established a strategic alliance with Dubai, dedicated to serving customers worldwide. We consistently tailor our service solutions to the specific needs of different markets and countries, ensuring a successful shopping experience for global customers.

CUSTOMIZED SERVICES

One Stop Service

Employing top talent to create the highest quality, deliver the finest service, and reap the most substantial rewards.

Free Quotation

- 3D generated images - including at least 5 images from different angles.
- 360°Video for one space (add \$199 for second space, if necessary)
- Setting out drawings - Plan & Layout & Elevation
- Joinery Production Drawings



We will give initial advice and ideas about how to tackle a project more efficiently.



We analyze your demand and optimize your space layout to increase customer experience.



With a thorough understanding of the latest design trends, we create incredible designs to suit your space and brand.



Manufacturing at our fully equipped factory in China, we produce top quality fixtures.



We take care of all the logistics to provide you with worry-free, hassle-free delivery.



Our local team of professional installer guarantee customer satisfaction and offer maintenance services if needed.

Our Advantages

Independent R&D

There are more than 30 design and technology research and development talents, and more than 200 independent research and development products every year.

Production Capacity

Our manufacturing facility spans over 30,000 square meters, specializing in counters, display racks, retail joinery, and custom display cases designed for premium product showcases.

Lean Manufacturing

Exceptional quality management capabilities, implementing lean production practices, and certified under ISO quality systems.

Technical Expertise

Our core team brings over 25 years of production experience, driving advancements in intelligent automation technology.



The Benefits of Custom Coffee Shop Counters

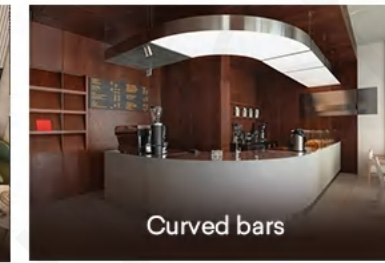
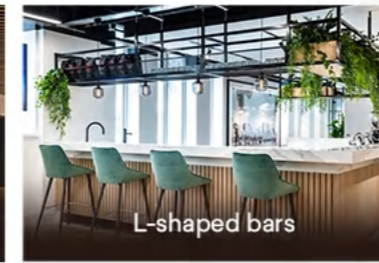
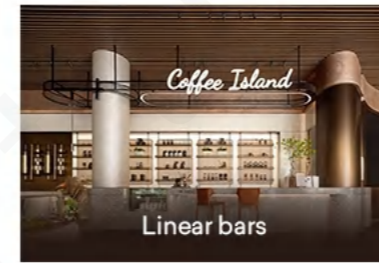
In the market, there are indeed many types of coffee shop bar counters to choose from. However, for some coffee shops with unique brands and sizes, standard bar counters may not be able to meet their requirements, making custom coffee bar counters the most suitable choice.

- ✔ Customized coffee bar counters can be designed according to the coffee shop's decor, positioning, and target audience.
- ✔ The size and layout of each coffee shop are different, so custom coffee bar counters can be designed according to the actual space of the coffee shop.
- ✔ Different coffee shops may have different business models and functional requirements, and custom coffee bar counters can be designed to meet different needs.



COFFEE BAR TYPES

There are four basic coffee shop bar counters which are readily available. **Linear bars** are simple and work with many different decor styles. **L-shaped bars** are two straight bars, effectively using corner space. **U-shaped bar** counters have a large working and display area, useful with multiple employees and for interaction/display. **Curved bars** provide elegant lines and a warm feel but need a more sophisticated decor.



DISPLAYS & FIXTURES

The displays & fixtures you see and touch define the style of a coffee shop. Lighting catches your eye first—a large, striking pendant lamp can define the space, while the soft glow from Edison bulbs makes it feel warm and relaxed. The cafe bar counter, often made of wood or stone, sits at the heart of the room or reception area, balancing beauty with everyday durability. Cafe shop walls and columns are usually decorated in exposed brick or textured tiles, adding depth and warmth, while well-placed display racks and back-lit floating shelving do more than just hold coffee bags—they add little moments of charm throughout the cafe interior.

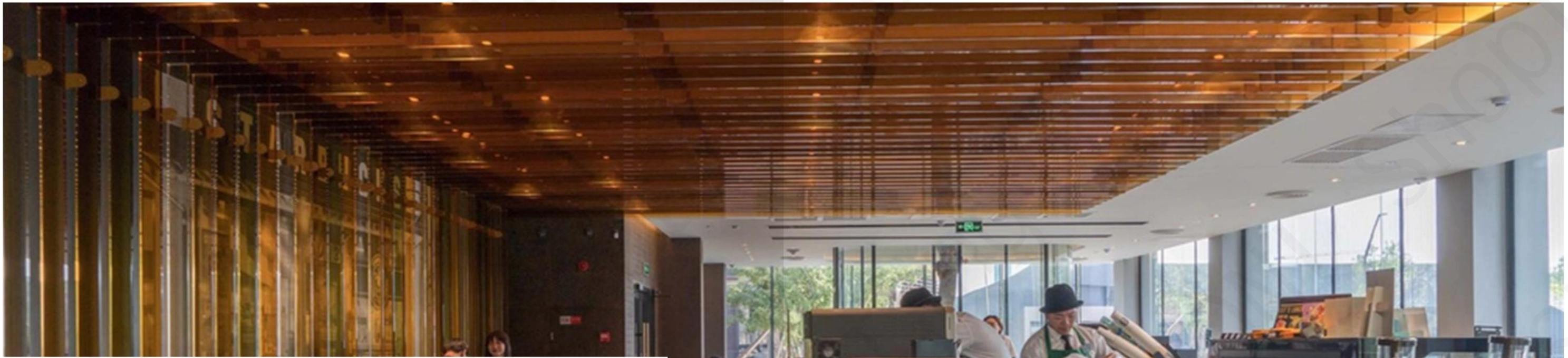




PUCCI

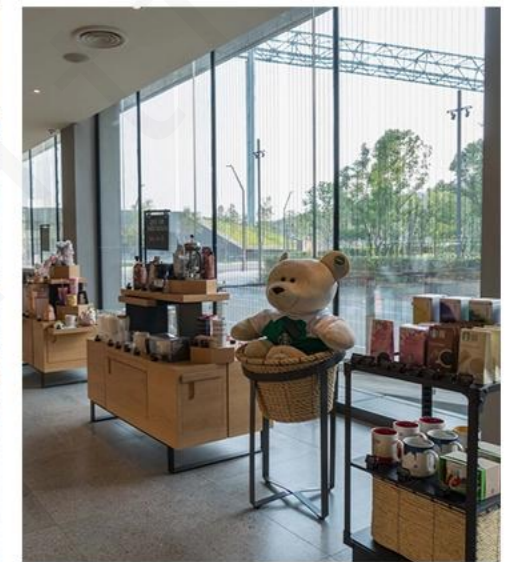
COFFEE	3.1	COLD BREW STILL	3.2	GRUBBANT	2.7
CAPUCCI	4.5	NITRO BREW	5.5	MUFFIN	3.2
CON PANNA	3.8	HOT CHOCOLATE	4.0	BAQEL	2.8
CORTADO	4.3	MILK	3.8	ARTISAN SCONE	4.5
LATTE	3.0	CHOCOLATE MILK	4.5	LE WAF	4.0
HOOB	5.3	HOT TEA	3.5	MALACCOM	3.0
THE	3.2	LEMONADE	5.0	COOKIE	2.5
MACCHIATO	3.8	EMBER	5.9	SHICKERDOOLE	2.5
DEIP	2.8	ARTESIAN WATER	4.0	WAFBIE	5.0
FOUR O'CL		SEASONAL	5.0		

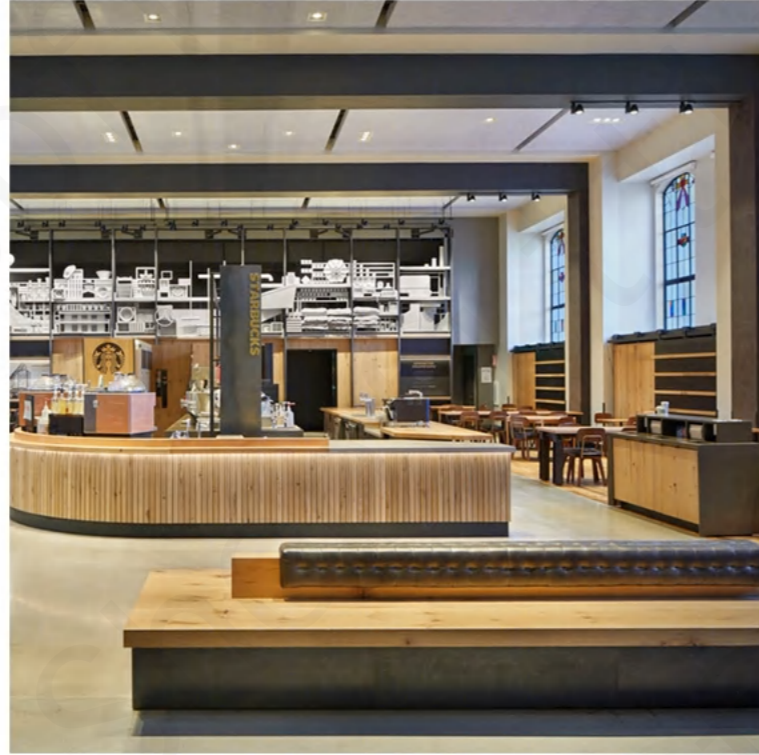
COFFEE STORE
VISUAL
REFERENCE



STARBUCKS

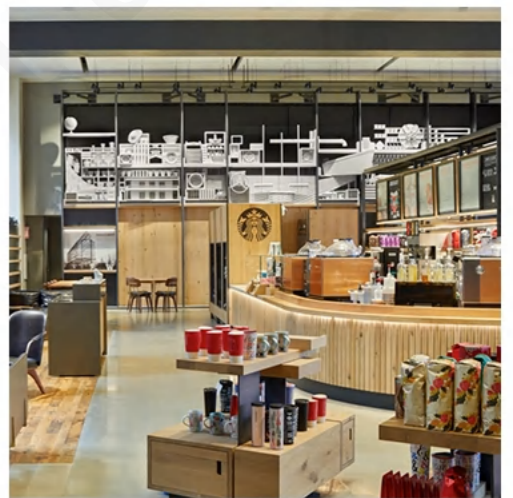
"Starbucks" blends modern minimalism with industrial style to create a bright and warm coffee space. Warm wooden bar counters and layered ceilings convey the warmth of handcrafted coffee. Large glass windows bring in natural light and city views, while comfortable seating caters to diverse needs. Nature-themed murals and green plants offer urban dwellers a relaxed retreat.





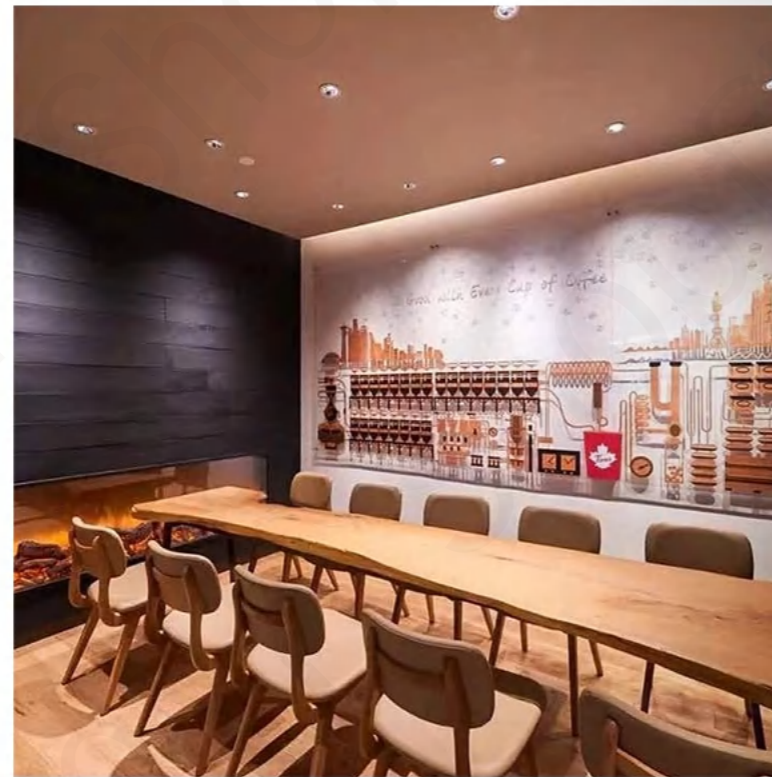
STARBUCKS

"Starbucks (Historic Building Store)" is rooted in a historic building, blending industrial style with warm wooden tones. In the high-ceilinged space, stained glass windows and large-scale white installation art complement each other. The curved wooden bar conveys the warmth of handcrafted coffee, and diverse seating areas meet the needs of work and socializing, continuing the modern chapter of coffee socialization amid vintage textures.



TIM HORTONS

"Tim Hortons" is rooted in a warm North American style, skillfully blending wooden textures with Canadian cultural symbols. The geometric patterned floor tiles complement the warm-toned wooden bar counter, while transparent glass brings natural light into the space. Canadian maple leaf art installations and a fireplace area add charm, and diverse seating areas cater to casual gatherings and light work, conveying a "warm to the heart" coffee social atmosphere amid cozy daily vibes.





LOCAL PRESS

"Local Press" centers on Australian waterfront industrial style, seamlessly blending wild natural charm with vintage warmth. Weathered concrete walls intersect with exposed brickwork, while hanging ferns, dried botanicals, and nautical decor (boat models, rope installations) create a lush, harbor-inspired vibe. Reclaimed wooden communal tables pair with retro high stools, and the tiled bar counter showcases vintage trinkets and fresh cut flowers. The outdoor area offers unobstructed views of the water and greenery, all bathed in the glow of warm pendant lights, embodying the laid-back comfort of Australian coffee culture.

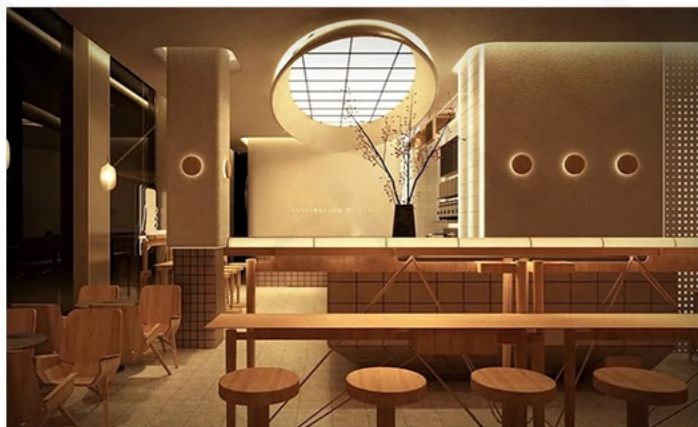
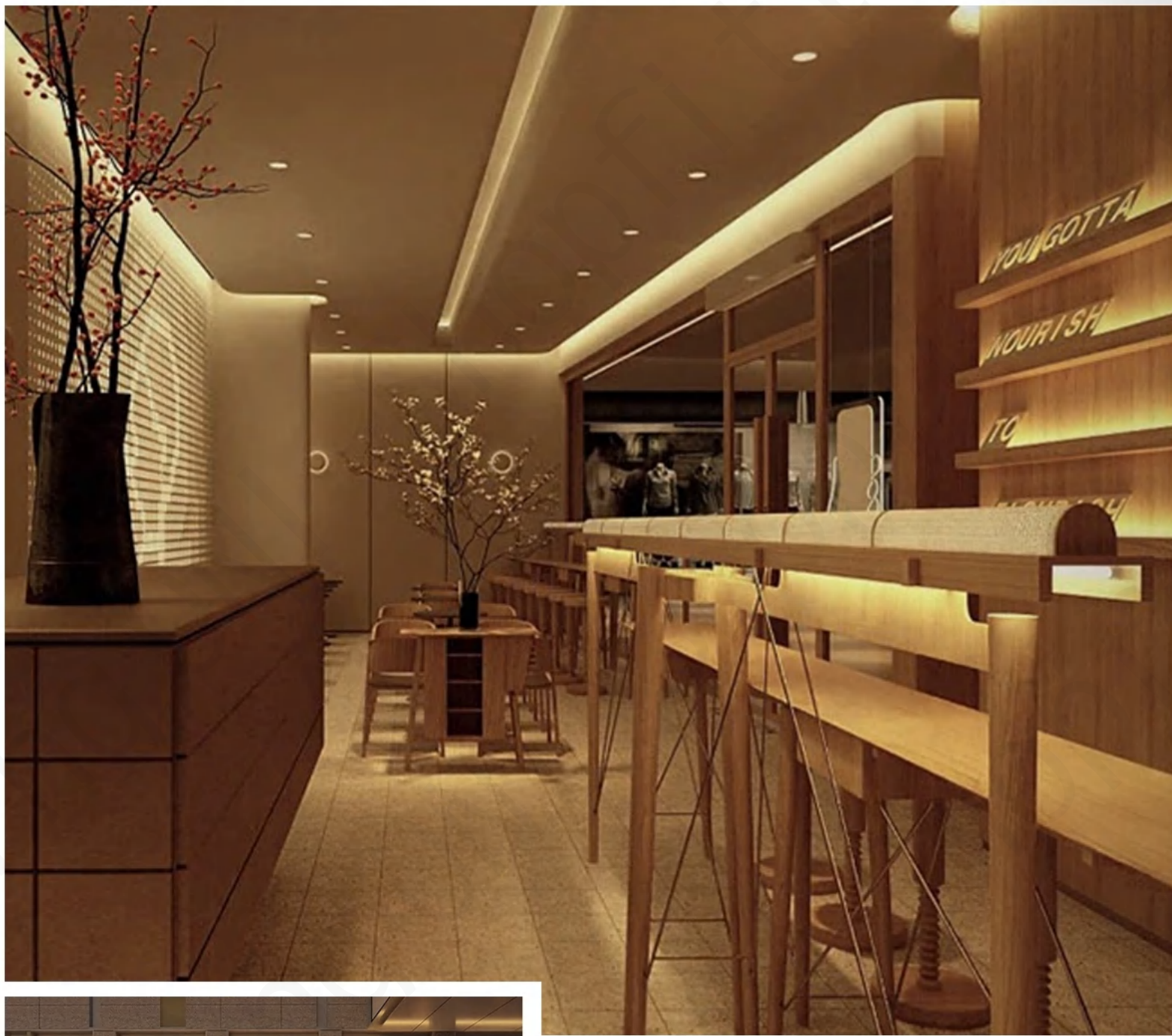




TIM HORTONS

"Tim Hortons (Shenzhen Themed Store)" is rooted in the legacy of North American coffee, seamlessly blending Shenzhen's urban texture with modern design language. The warm brown metal curved storefront, paired with the illuminated red maple leaf logo, instantly conveys the brand's identity. Inside, the terrazzo mosaic floor echoes the wooden grid ceiling, while the city-themed art wall weaves coffee-making processes and Shenzhen landmarks together with neon lines and illustrations, gently wrapping the brand story and local memories. Diverse seating areas (curved booths, small round tables, high stools) cater to casual gatherings and light work, creating a warm and vibrant coffee social space under the glow of warm light strips.





HEYTEA

"HEYTEA (Warm Minimalism Store)" embodies Eastern minimalist tea aesthetics with warm wood and textured finishes. A circular skylight echoes wall lamps and a dotted light wall. Warm brown tiles meet textured plaster, paired with simple wooden furniture and dried florals. Soft lighting creates a tranquil atmosphere, offering urban dwellers a calming retreat to savor tea slowly.



NAYUKI PRO STORE

"NAYUKI PRO Store" creates an efficient tea & coffee space with a fresh minimalist style. The transparent facade and iconic green logo are eye-catching, while the outdoor green area offers coziness. Inside, the light wooden bar and grid shelving complement each other, with warm light enhancing brightness. Colorful seating and neat displays cater to both quick service and leisure needs.





TOBY'S ESTATE CHIPPENDALE

creating an authentic Australian coffee space. Exposed red bricks echo the wooden bar counter, while professional coffee equipment and grid windows convey the warmth of handcrafted coffee. The lively bar and cozy seating areas make coffee socializing full of daily charm.



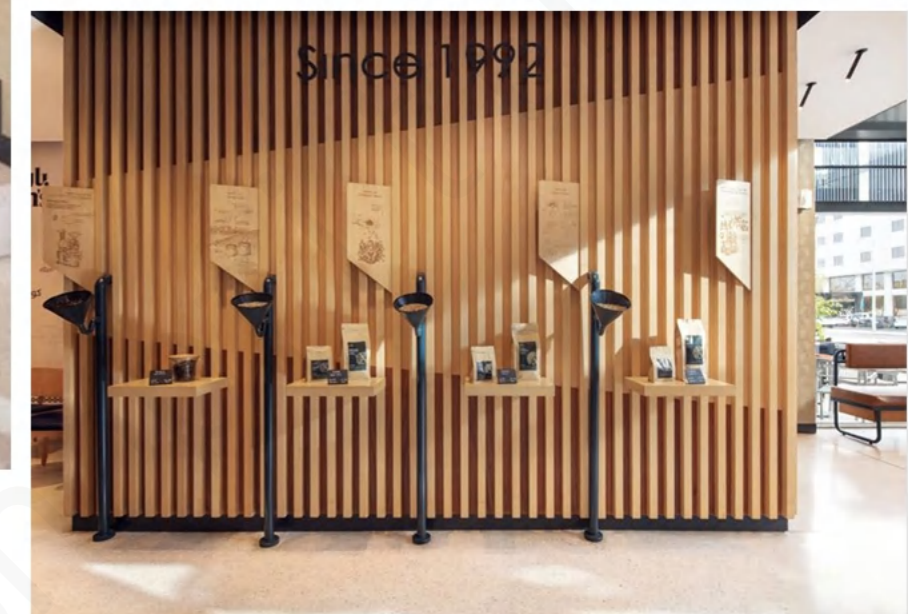
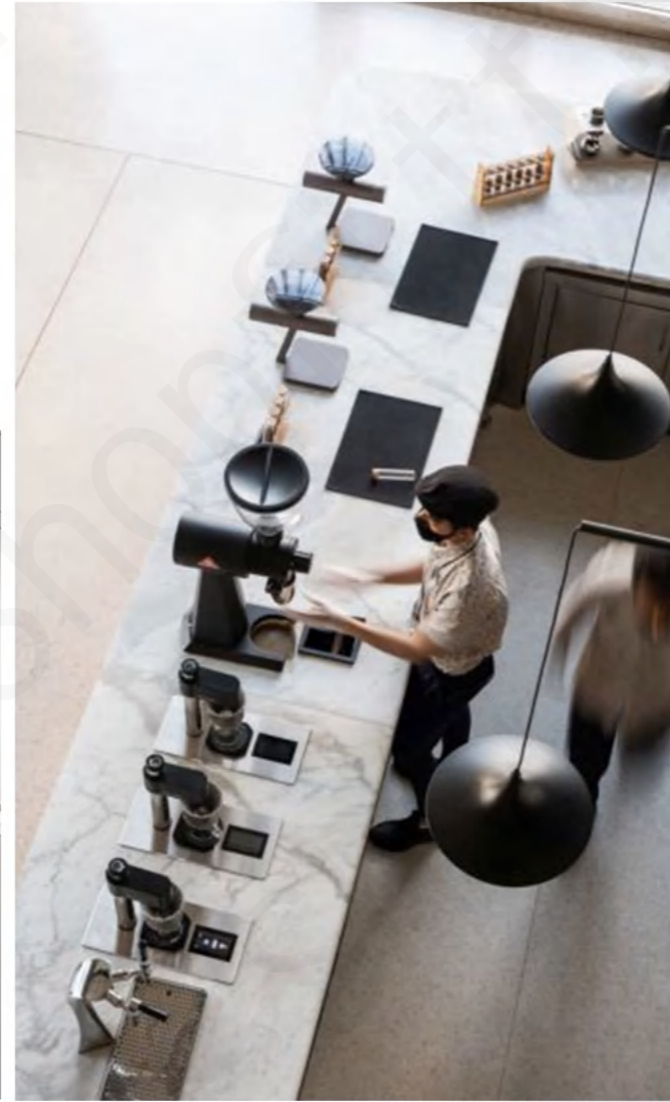
INDUSTRY BEANS FITZROY

"Industry Beans Fitzroy (Melbourne)" centers on minimalist white tones and natural greenery, creating a transparent and healing coffee space. Large glass windows and grid ceilings bring in natural light, with coffee trees and tropical plants interspersed. Light wooden furniture echoes pure white walls, conveying the fresh vitality of Australian coffee in a relaxed atmosphere.



BARN'S (SAUDI STORE)

A quintessential Saudi coffee brand, it centers its design around modern luxury and Middle Eastern charm to create an exquisite coffee experience.



% ARABICA

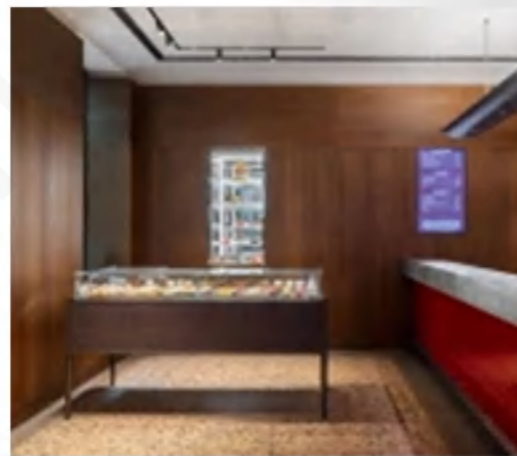
"% Arabica (Saudi Store)" uses pure white minimalism as its core language to create a transparent and pure coffee space. The curved wall of coffee bean bags makes a strong visual impact. The pure white curved bar counter echoes soft light strips, and the simple sofa area conveys a sense of relaxation, highlighting the brand's pure coffee aesthetics through restrained design.





ILLY FLAGSHIP STORE MILAN

"illy Flagship Store Milan" centers on Italian elegance, creating classic charm through the contrast of vibrant red bar counters and warm wood veneers. Terrazzo floors pair with professional metal equipment, while transparent display cases and organized shelves convey expertise. Warm lighting accentuates the refinement and ritual of Italian coffee culture.





LAVAZZA

"Lavazza (Italian Store)" centers on Italian luxury and modernity, creating an exquisite coffee social space. The curved black-gold bar and star-like chandelier make a striking visual impact. Warm wood veneers echo metallic details, paired with colorful art hangings, conveying the elegance and warmth of Italian coffee culture under natural light.





COSTA COFFEE

"Costa Coffee (Airport Store)" features vibrant red as the main tone, paired with greenery and illuminated signage, creating an efficient and convenient coffee space. Neon coffee cup line drawings on the wall convey warmth, while self-checkout and open bar counters balance efficiency and daily charm, perfectly fitting the airport commuting scene.





**PROJECTS-RETAIL
STORE FIXTURE
OUR CASE**

ESPRESSO

Americano	3.00
Cappuccino	3.00
Double Espresso	3.50
Latte	4.20
Macchiato	4.50
Mint Chocolate	5.25
Mocha	4.50
White Mocha	5.00

ICE BLENDED

Caramel	4.25
Coffee Jelly	4.50
Cookies and Cream	5.00
Hazelnut Mocha	4.50
Matcha Cream	6.00
Mint Chocolate Chip	6.00
Strawberry Cream	5.50

Earl Grey	3.75
English Breakfast	4.50
Green Tea	4.50
Jasmine Tea	4.00



WARM CONCRETE COFFEE

CASE SHOW
successful cases of
Coffee Shop

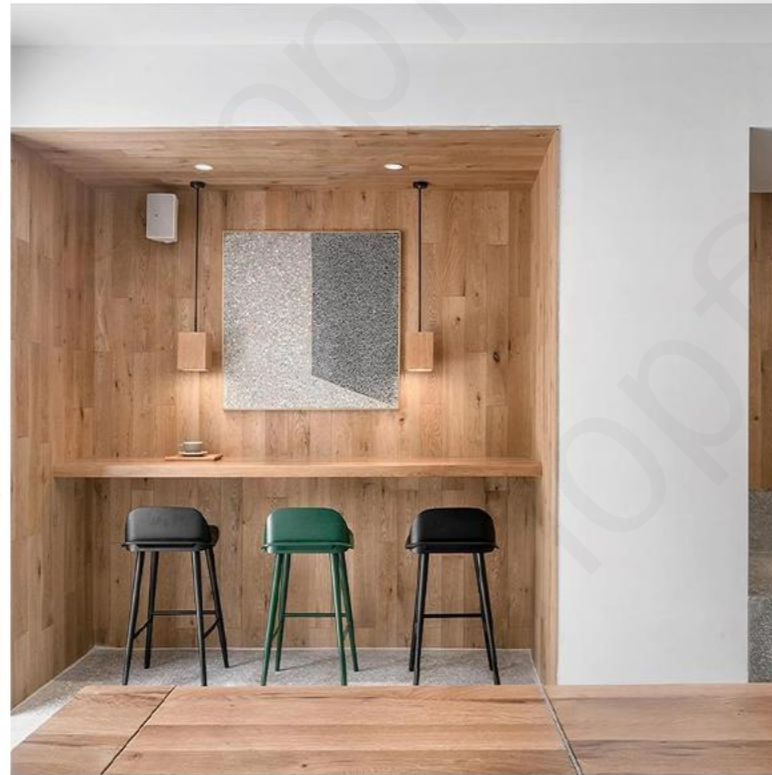
Based on a modern and minimalist design tone, we create a coffee space that is both demonstrative and practical through custom wooden display cabinets, transparent glass partitions and layered lighting systems. The overall display is clean and tidy, with soft furnishings and props in a unified style, enhancing spatial texture and brand vision, creating a comfortable and relaxed consumer experience.

MOKO COFFEE

CASE SHOW

successful cases of
Coffee Shop

With simple log as the main tone, custom display cabinets, niches and layered shelves form a complete display system. The terrazzo bar and wooden furniture are in harmony. Lighting and soft decorations highlight the atmosphere, combining display, storage and practical functions, presenting a clean and advanced coffee space.



GREENGRASS

CASE SHOW

successful cases of
Coffee Shop



HEARTTY

CASE SHOW

successful cases of
Optician's Shop



APTEA COFFEE

CASE SHOW

successful cases of coffee shop

Centered on wabi-sabi aesthetics, the 3D wood-grain bar counter and terrazzo countertop unify function and aesthetics. Wooden furniture and micro-cement walls create material contrast. Embedded niches, layered shelves and glass dessert cabinets balance display and storage, while black metal lamps and natural greenery highlight the relaxed atmosphere, conveying the simple and advanced texture of the coffee space.

MIX SWEETS | CASE SHOW

successful cases of
Coffee Store

Based on a simple industrial style, custom wooden display shelves, wave bar counter and glass showcase form a complete space prop system. Patterned floor tiles and metal lamps enhance texture, and wooden soft decoration creates a warm atmosphere. It integrates display, storage and practical functions, presenting an exquisite coffee & bakery space.

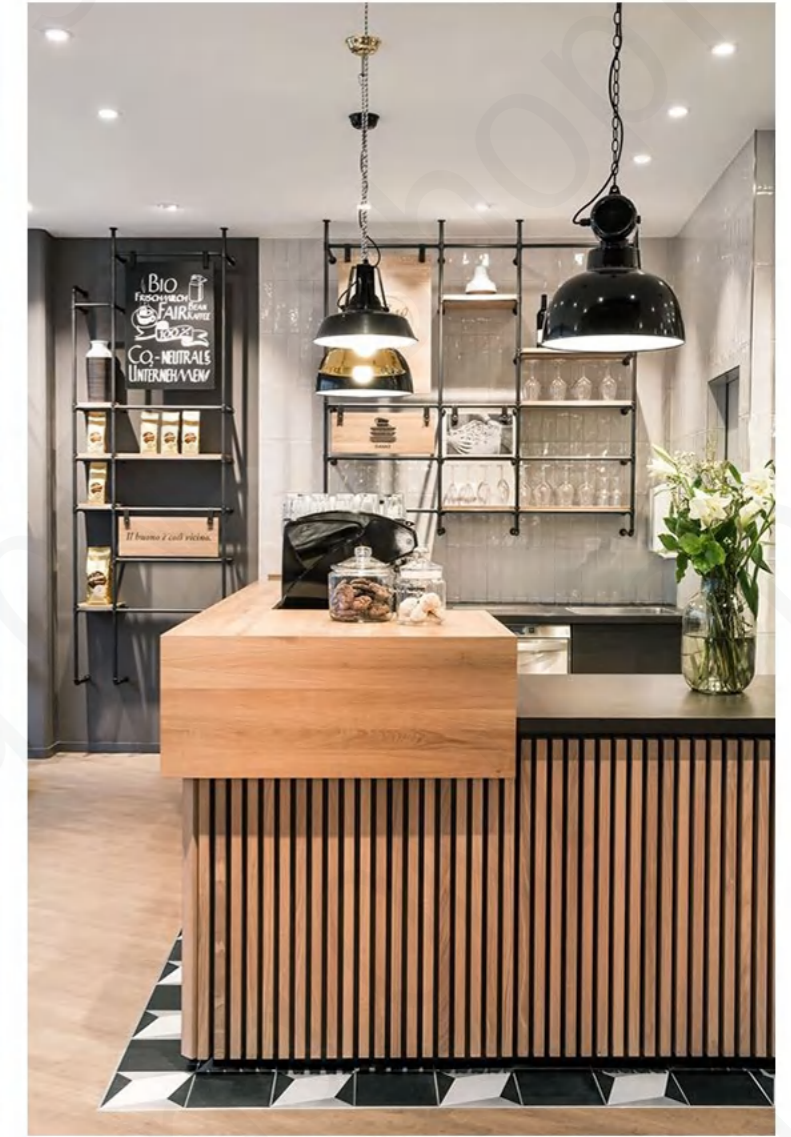




UTRO CASE SHOW

successful cases of
Coffee Store

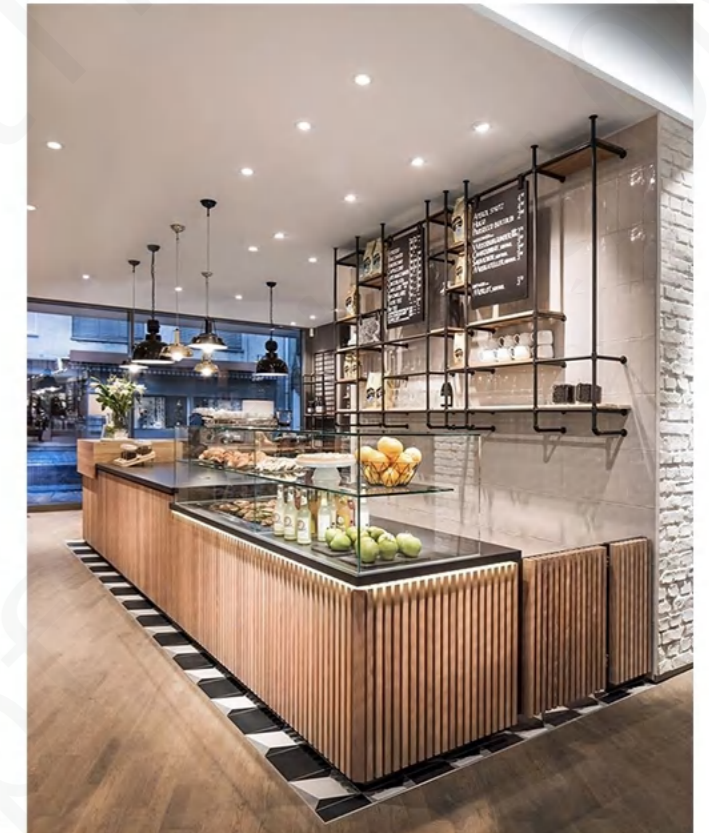
Centered on vibrant retro display logic, wooden bar counters and exposed pipes create industrial texture, while tropical murals and plant walls infuse natural vitality. Plaid and teal soft furnishings collide to create a retro vibe. Glass display cabinets and wooden shelves organize products, and spherical chandeliers with black-and-white patterned tile floors accent details, crafting a coffee social space with both warmth and design sense.



PRIMO CASE SHOW

successful cases of
Coffee Store

With warm log as the core display language, vertical wood veneer bar counters and geometric wooden partitions create spatial order. Custom metal shelves and glass display cabinets neatly organize coffee utensils and baked goods. Rope net ceiling and vintage chandeliers enhance the atmosphere, paired with leather lounge chairs and wooden tables, presenting a fresh and natural Nordic coffee scene.

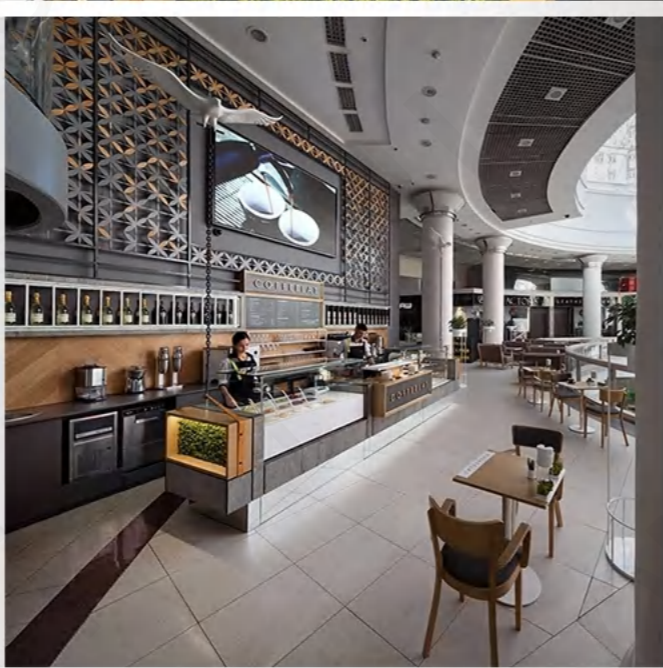
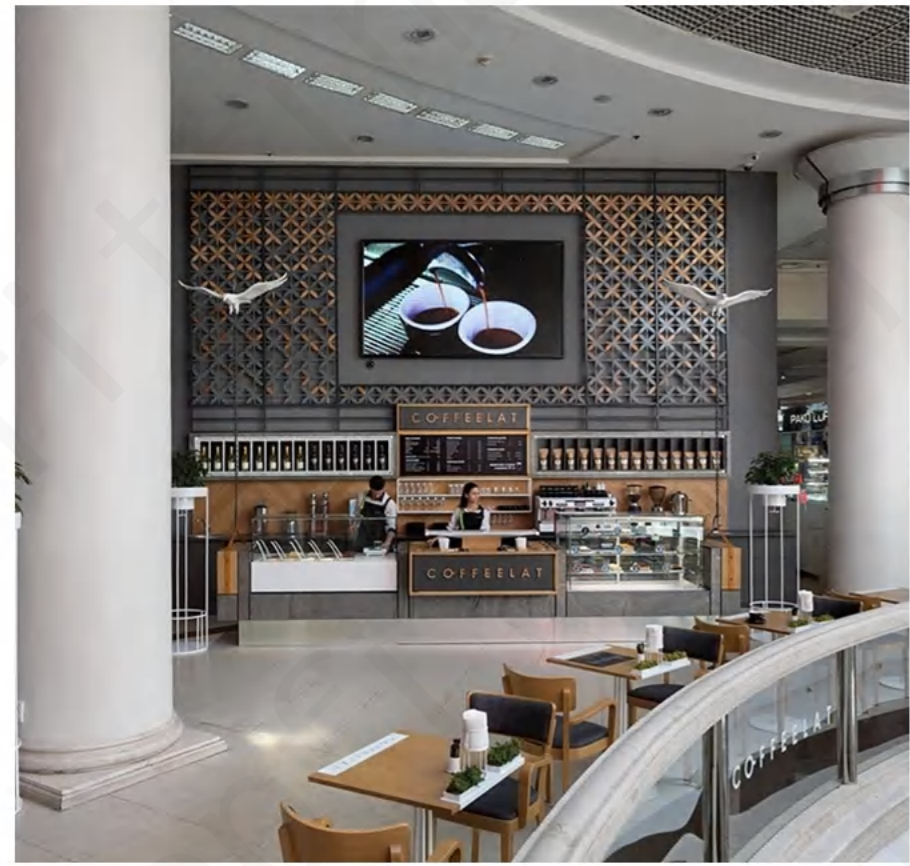
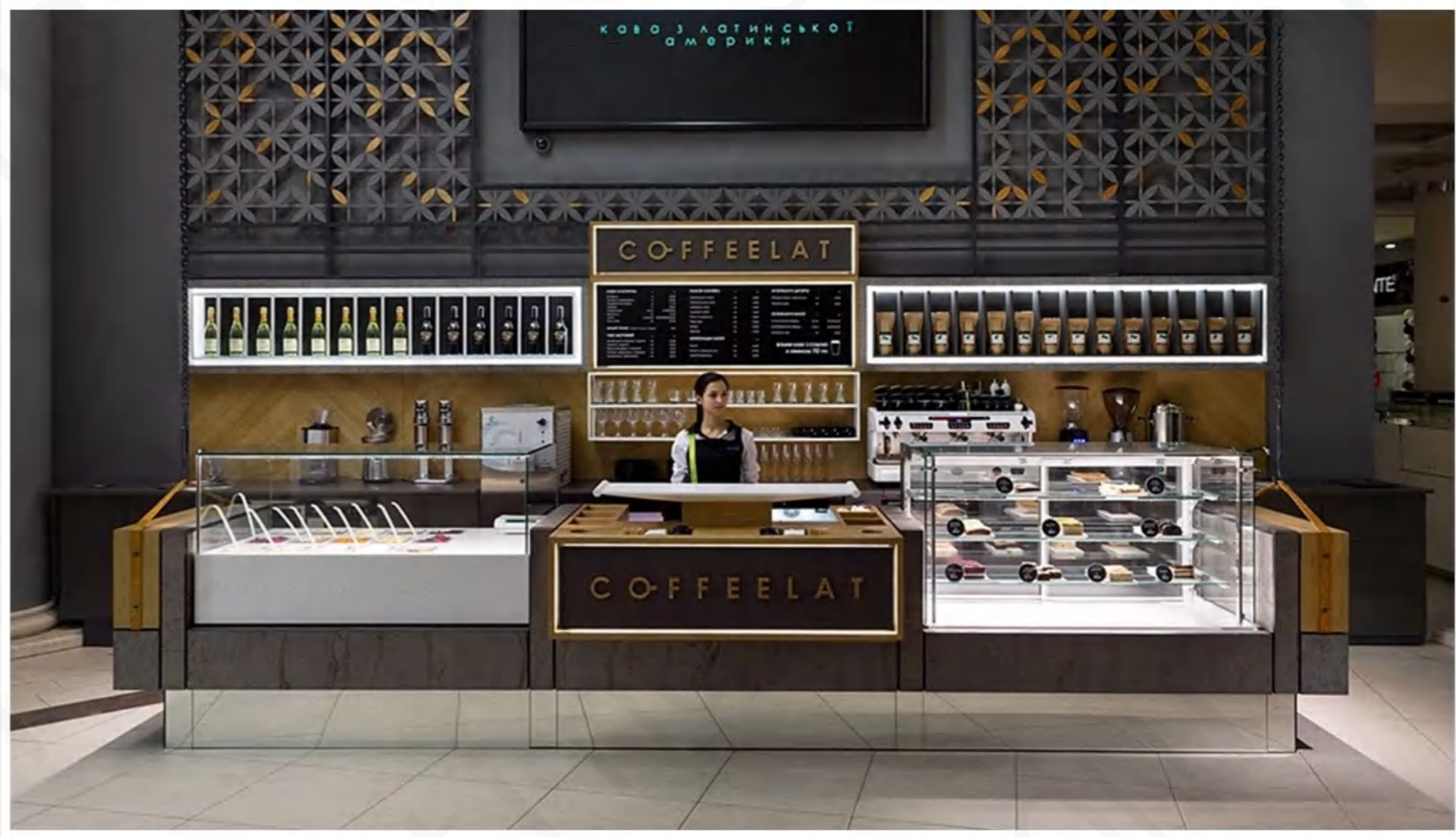


COFFEELAT

CASE SHOW

successful cases of
Coffee Store

Centered on luxury refinement, custom metal carved background walls and wooden bar counters form the core display system. Glass dessert cabinets and layered shelves neatly showcase coffee and light meals, while bird sculptures and green plant installations add artistic details. Wooden tables echo the mall's transparent lighting, presenting an efficient and sophisticated urban coffee scene.

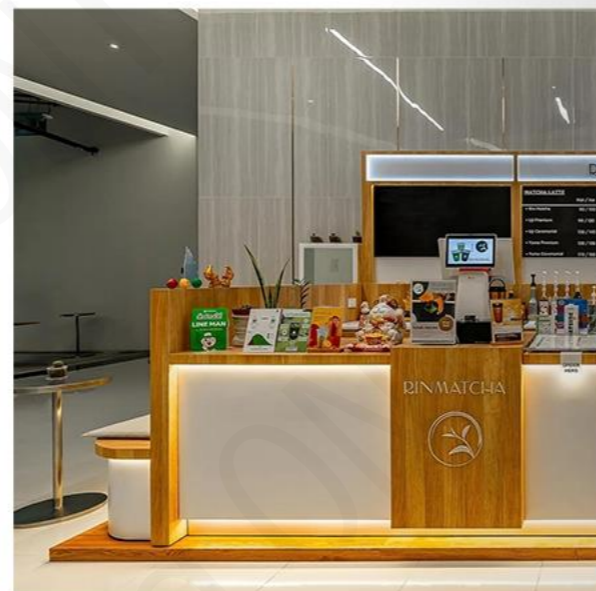
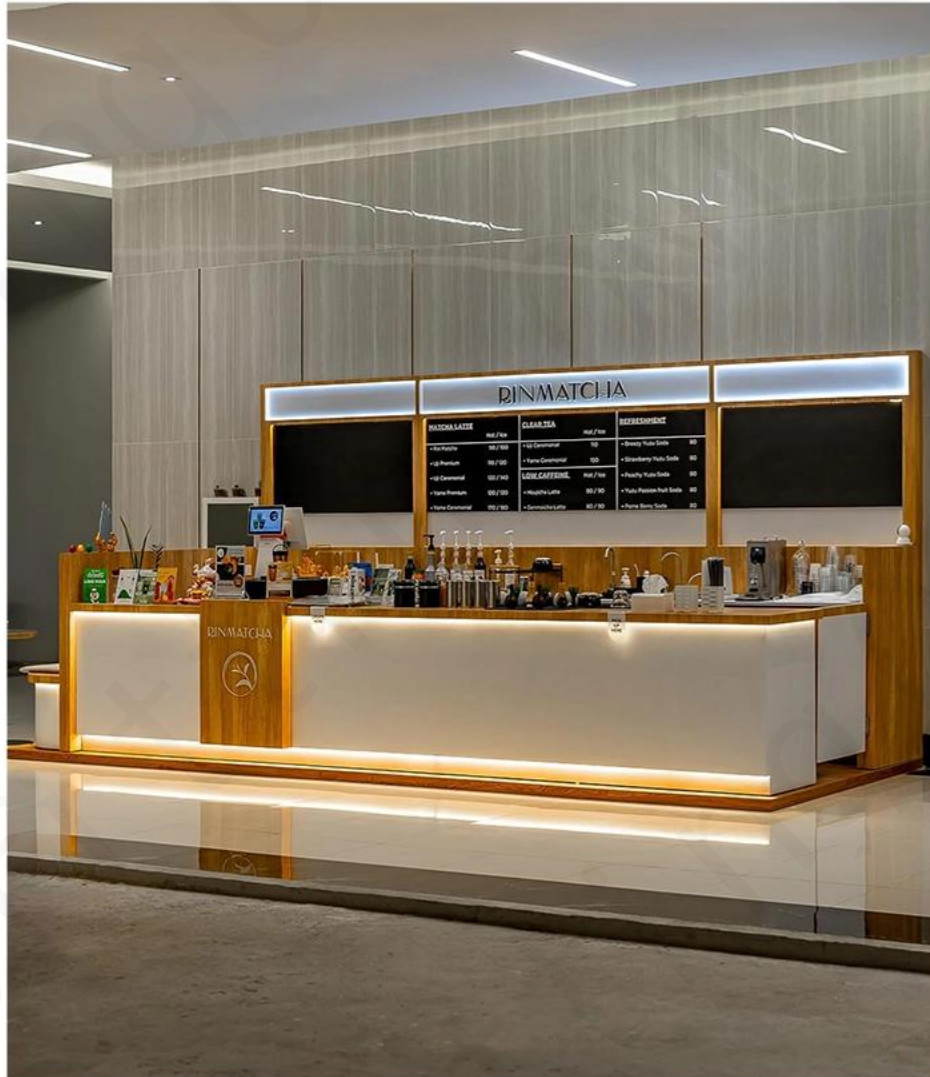


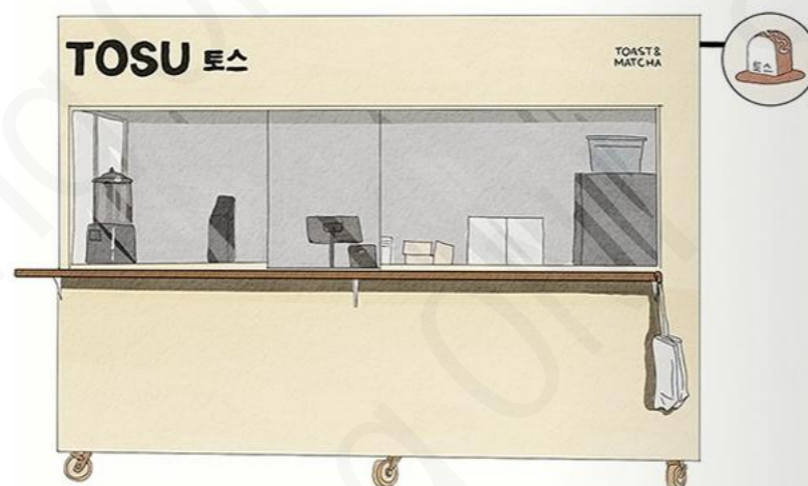
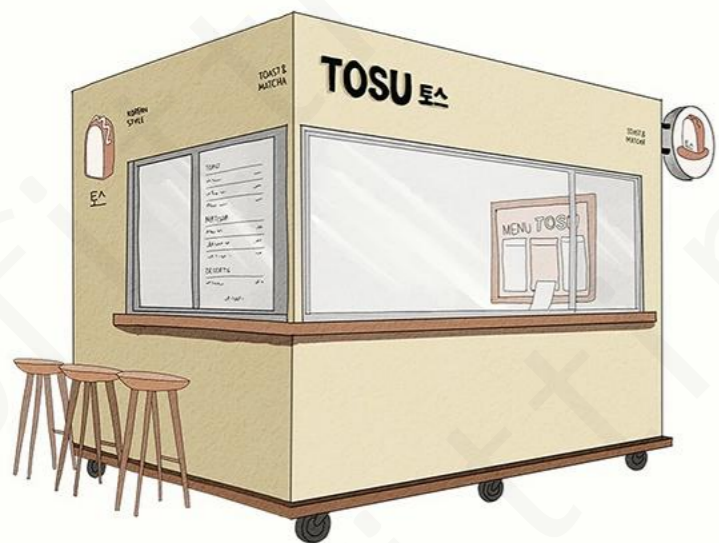
RINMATCHA CASE SHOW

Mobile Coffee Kiosk

successful cases of
Coffee Store

Centered on light Japanese display logic, wood-white spliced bar counters and light strip atmosphere unify function and aesthetics. The mirror booth and metal small tables create a convenient waiting area, menu display area and brand logos enhance visual recognition, and green soft furnishings infuse natural vitality, presenting a delicate and efficient mall matcha service form.





TOSU CASE SHOW

Mobile Coffee Kiosk | successful cases of Coffee Store

Centered on portable pop-up display logic, the beige kiosk and wooden counter unify function and aesthetics. The circular toast light box and Korean text logo convey brand tone, the glass window and outdoor high stools enhance social attributes, and the wheel structure adapts to multi-scenario movement, presenting a compact and exquisite outdoor coffee service form.





La zuppa dell'orto
con arance di stagione

La crostata dell'orto
con frutta di stagione e cioccolato

ORTO
URBANO

Il pane dell'orto
con lievito naturale

La torta dell'orto
con frutta di stagione

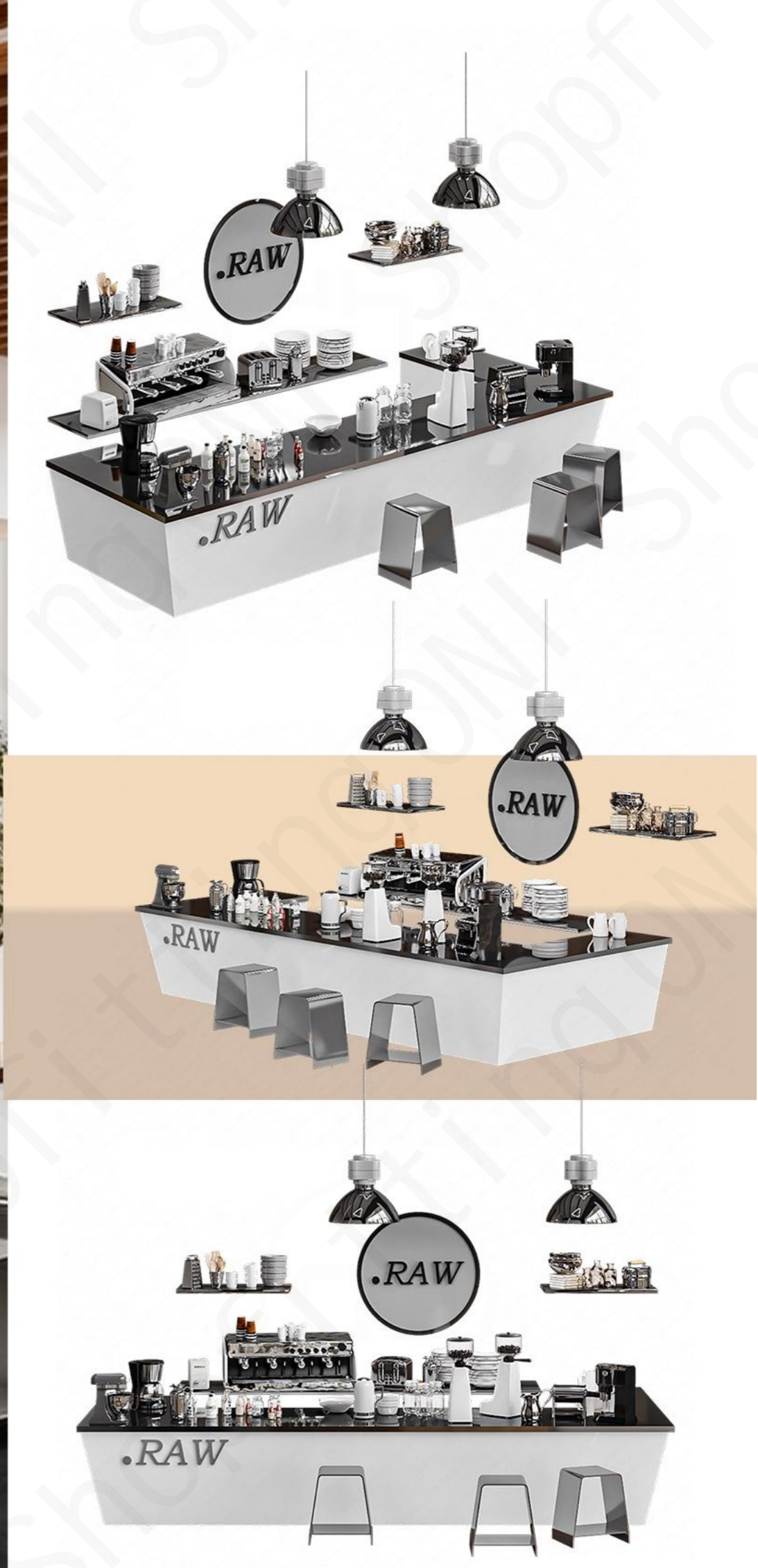


COFFEE SHOP DISPLAY



COFFEE COUNTER

This coffee space centers on a “minimalist luxury in black and white + natural wood” aesthetic, creating a refined modern experience: At its heart lies a predominantly white bar counter, where coffee machines, utensils, and jars are neatly arranged atop a black mirrored surface, crafting a chic yet cozy luxury coffee experience zone.





COFFEE COUNTER

The bar counter features a wooden frame paired with a white cabinet body, displaying a coffee machine, glass jars filled with snacks, and tableware on its surface.





COFFEE COUNTER

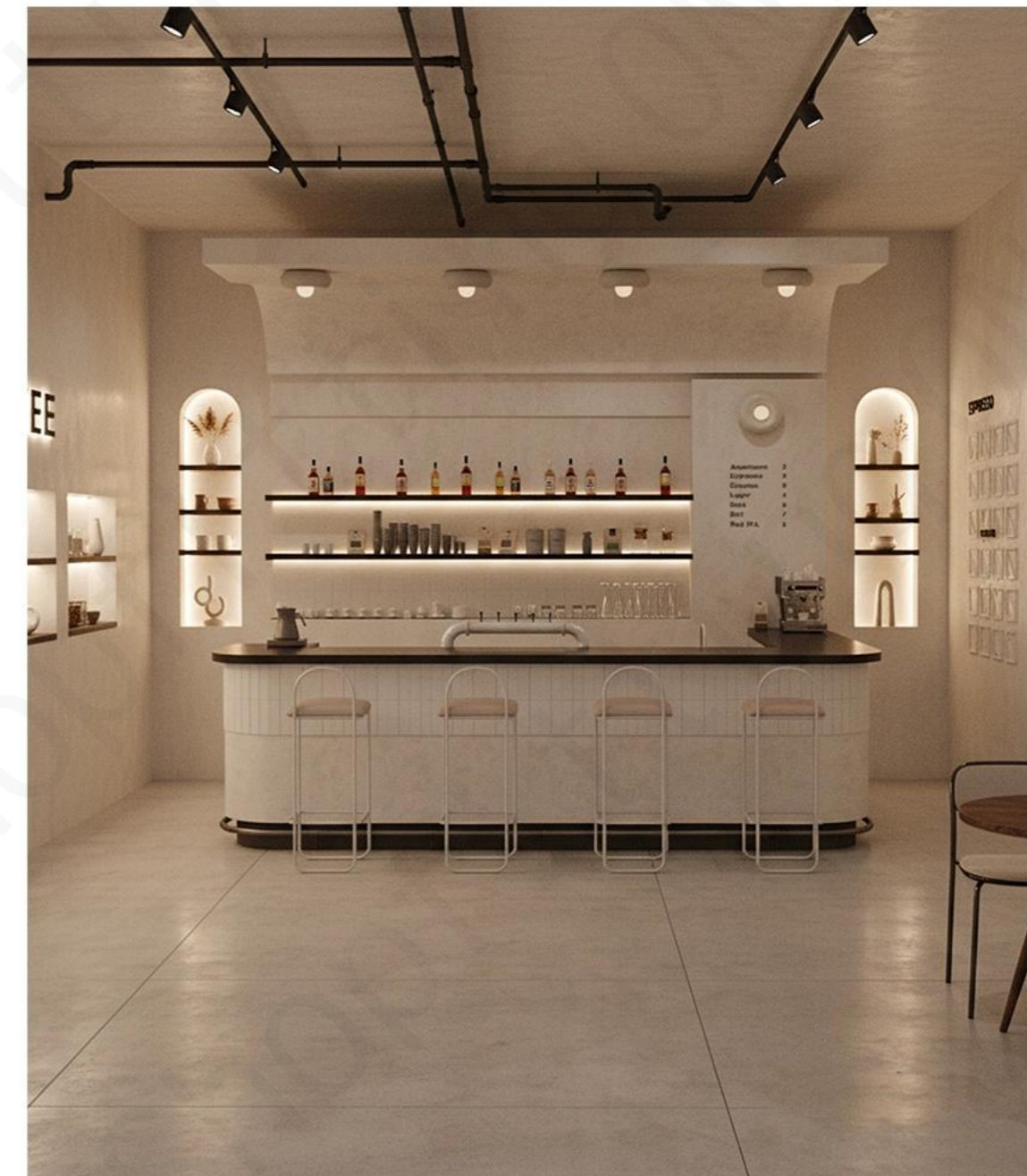
The bar counter features a core design of “soft pink and blue-green Morandi contrasting colors + curved softening elements.” The backdrop wall uses a light pink base with curved patterns of blue-green herringbone tiles embedded within.





COFFEE COUNTER

The bar features a black countertop paired with a white vertical tile façade, complemented by four white metal-framed bar stools. This modern, minimalist bar seamlessly integrates coffee and beverage service, making it ideal for industrial or minimalist dining spaces.





COFFEE COUNTER

The bar counter features a black stone countertop with curved vertical panels, incorporating green glass bricks at its center. The coffee machine and cup storage are seamlessly integrated into the counter, complemented by ambient lighting. This design creates a focal point ideal for upscale coffee shops or creative dining bars.



COFFEE KIOSK

Within the glass display cabinet, pour-over kettles, glassware, and coffee bean containers are arranged in tiers. A black coffee machine is embedded on the right, while pour-over kettles and canned coffee beans are displayed on the left. Below, three light wood-toned bar stools complement the coffee bar area, ideal for specialty coffee shops or upscale commercial spaces.



COFFEE KIOSK

The bar counter features a curved matte gray surface, seamlessly integrating coffee equipment and a pastry display case. The substantial presence of marble, the refined elegance of metal tubing, and the softness of matte gray harmonize beautifully. Light emanates from within the tubing, creating an artistic coffee island perfect for high-end commercial spaces.



Coffee Store Display



Coffee Store Display



Coffee Store Display



Coffee Store Display



Coffee Store Display



Coffee Store Display



Coffee Store Display



Coffee Store Display



Coffee Store Display



Coffee Store Display



Coffee Store Display



Coffee Store Display



Coffee Store Display

Coffee Store Display



Coffee Store Display



Coffee Store Display

Coffee Shop Light Box Sign



Coffee Menu Light Box



Coffee Menu Light Box



Coffee Store Storage Shelving



Coffee Shop Counter



Coffee Shop Counter



Coffee Shop Booth



Coffee Shop Island



Coffee Shop Counter



Coffee Shop Island



Coffee Shop Counter

Coffee Shop Display Shelves



Coffee Store Storage Shelving



Coffee Store Storage Shelving

Coffee Shop Furniture



Coffee Shop Chairs



Coffee Shop Chairs



Coffee Store Storage Shelving



Coffee Store Storage Shelving



Coffee Shop Chairs



Coffee Shop Chair



Coffee Store Storage Shelving



Coffee Store Storage Shelving



Coffee Shop Chair



Coffee Shop Chairs

Coffee Shop Display Shelves



Coffee Shop Chair



Coffee Shop Chair



Coffee Store Booth



Coffee Store Booth



Coffee Store Booth



Coffee Store Booth



GUANGZHOU ONI SHOPFITTING LIMITED

ONI Factory : Xiusheng Road, Taihe Town, Baiyun District, Guangzhou, China

Start your Customized Plan



Contact Me :

Name : Ms. CICI TANG

Phone/Whatsapp : +86 18620963396 Email : sales1@onishopfitting.com

Website : www.onidisplay.com | www.onishopfitting.com

ONI
ONI Shopfitting